



Newton Road, TW7
£749,950

Dexters



Newton Road, TW7

Nestled on the sought after Newton Road in Isleworth, this stunning three bedroom, three bathroom detached family home has been meticulously renovated and thoughtfully extended to an exceptional standard throughout. The property boasts a seamless blend of modern design and timeless elegance, featuring a beautifully executed loft conversion with a private en-suite, as well as a rear extension that creates a spacious and light-filled dining area.

The ground floor showcases a stylish front-facing kitchen, a central reception/living room, and an extended rear dining space with views over the garden. Upstairs, the first floor offers two generous bedrooms, one with its own en-suite, alongside a luxurious family bathroom. The impressive top floor loft suite completes the layout, offering a peaceful retreat and a sleek en-suite bathroom.

Step outside into the beautifully landscaped rear garden, which has been designed with privacy and tranquillity in mind. Benefiting from a south-west facing aspect, the garden enjoys sunshine throughout the day, perfect for al fresco dining and relaxing outdoors.

Located within close proximity to local schools, transport links, and the amenities of both Isleworth and St Margarets, this exceptional home offers a rare opportunity to acquire a turn-key property in a desirable and family-friendly location.

Features

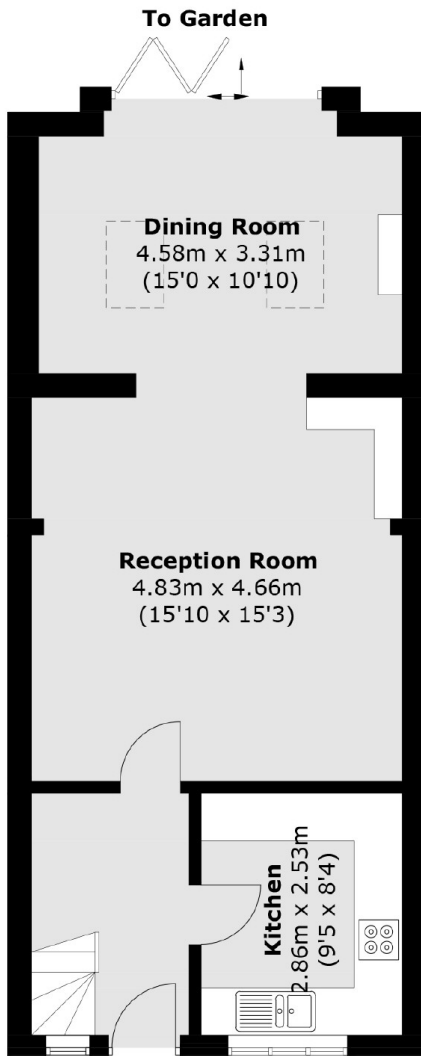
- Detached House
- Three Bedrooms
- Three Bathrooms
- Rear and Loft Extended
- Immaculately Presented
- Sought After Location



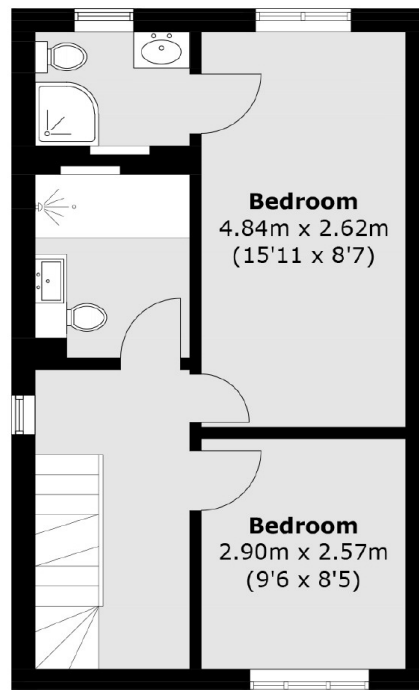




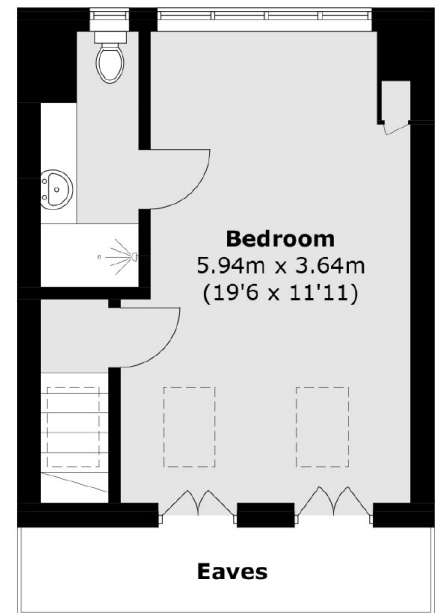
Newton Road, Isleworth, TW7



Ground Floor



First Floor



Second Floor

Total area (approx.): 118.5 sq. m (1,275.6 sq. ft)
(Excluding Eaves)