

# Ivy Cottage

Alvescot •





# Ivy Cottage

Alvescot •

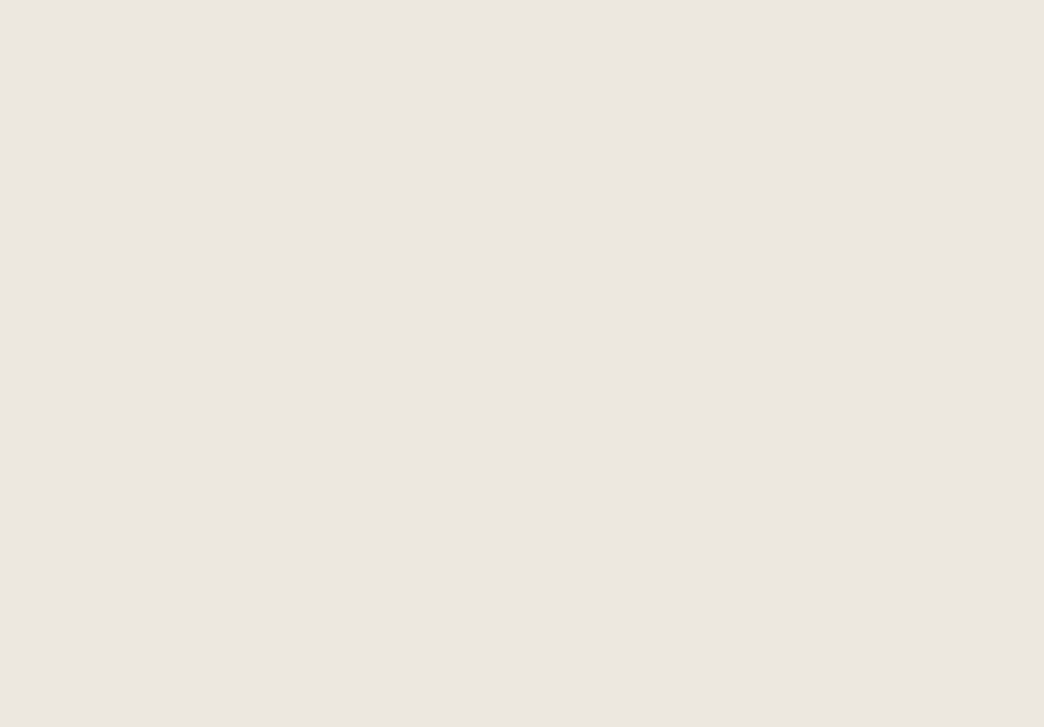


Butler Sherborn  
43-45 Caste Street, Cirencester  
Gloucestershire, GL7 1QD  
T 01285 883740  
E [cirencester@butlersherborn.co.uk](mailto:cirencester@butlersherborn.co.uk)

The London Office  
40 St James's Place  
London, SW1A 1NS  
T 0207 839 0888  
E [enquiries@thelondonoffice.co.uk](mailto:enquiries@thelondonoffice.co.uk)  
[www.thelondonoffice.co.uk](http://www.thelondonoffice.co.uk)





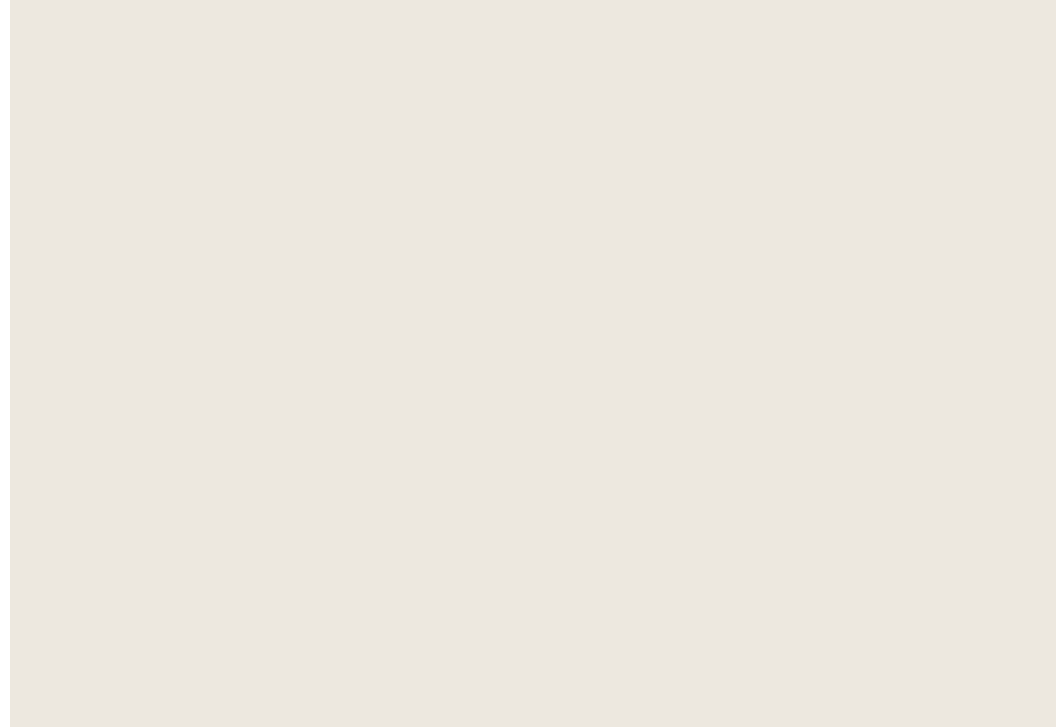




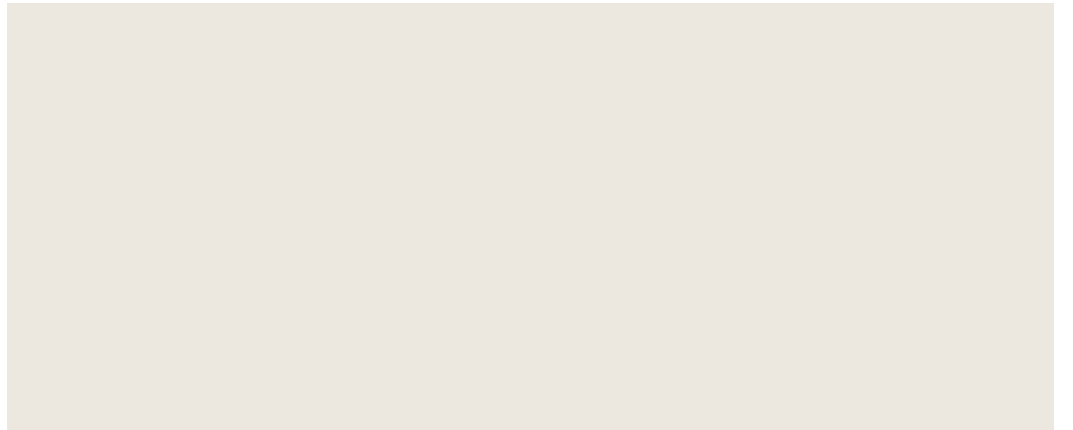
Cosy



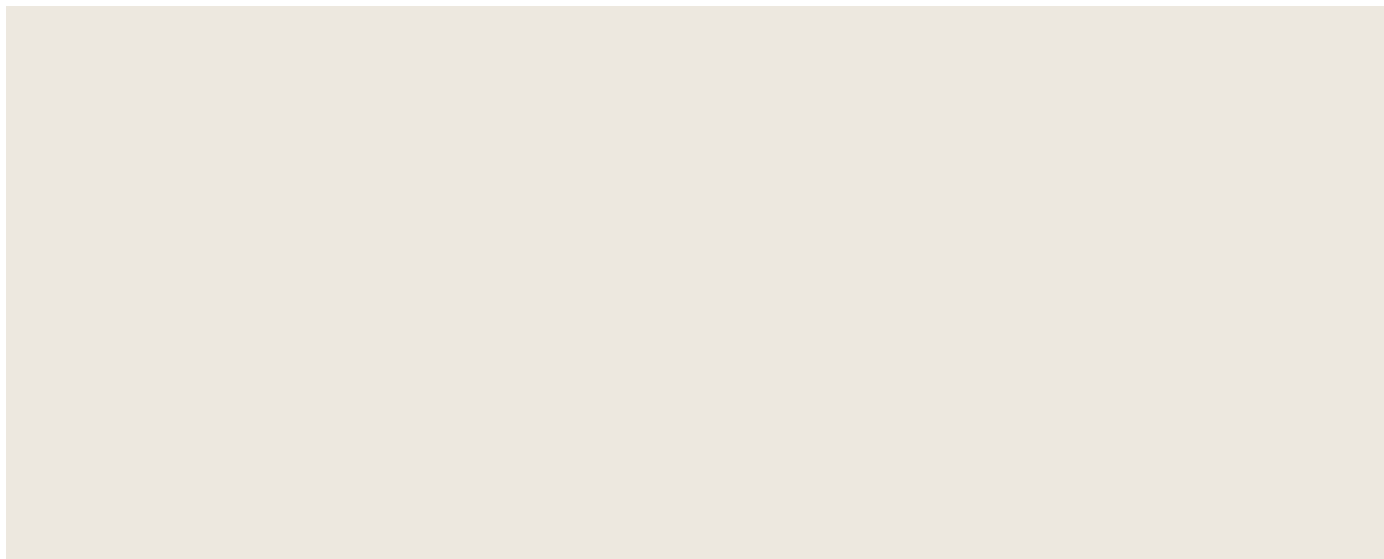
Cosy











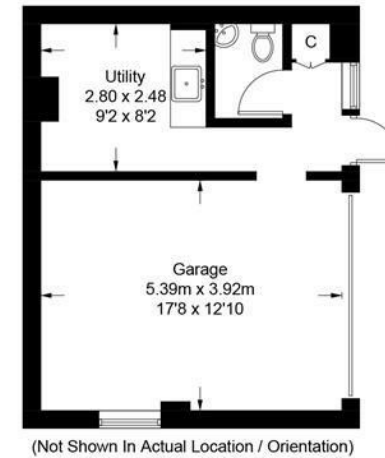
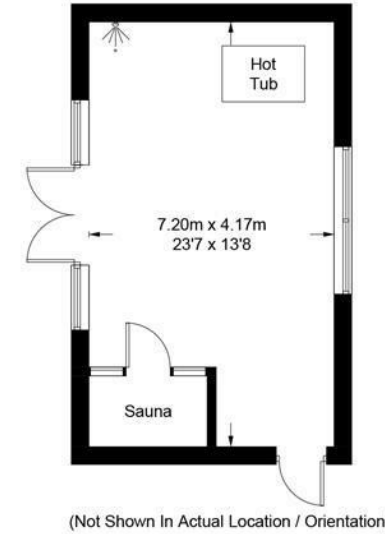
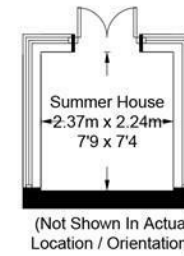
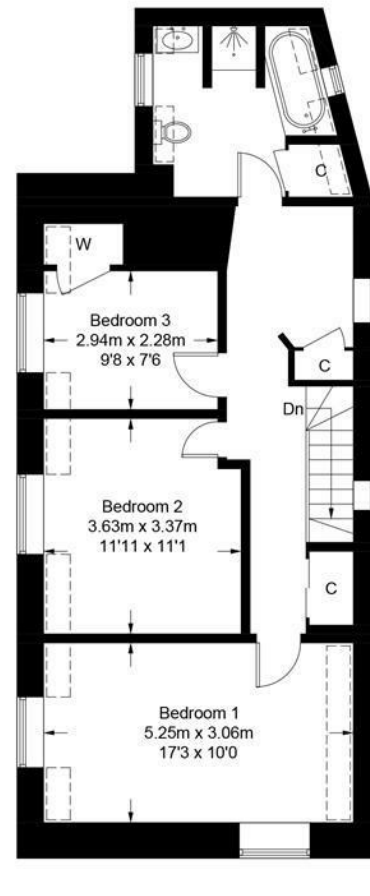
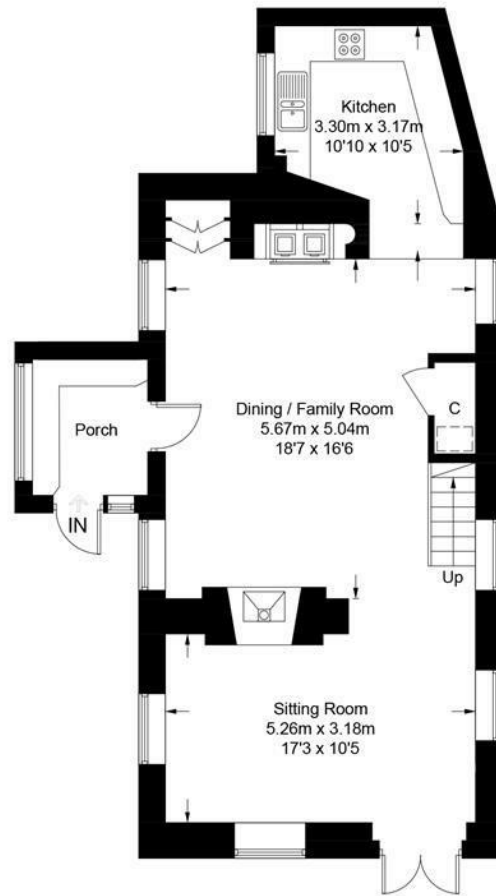








# Ivy Cottage, Lower End, Alvescot, OX18 2QA



Approximate Gross Internal Area = 132 sq m / 1417 sq ft  
 Garage / Utility / Outbuilding = 63.8 sq m / 687 sq ft  
 Summer House = 5 sq m / 57 sq ft  
 Total = 200.8 sq m / 2161 sq ft

Illustration for identification purposes only, measurements are approximate, not to scale. (ID1276657)



