

Christian Reid
Estate Agents



Godalming

£950pcm

Church Road, Godalming, GU8 5JD



2 Bedrooms



1 Reception



1 Bathrooms

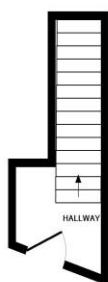


Maisonette

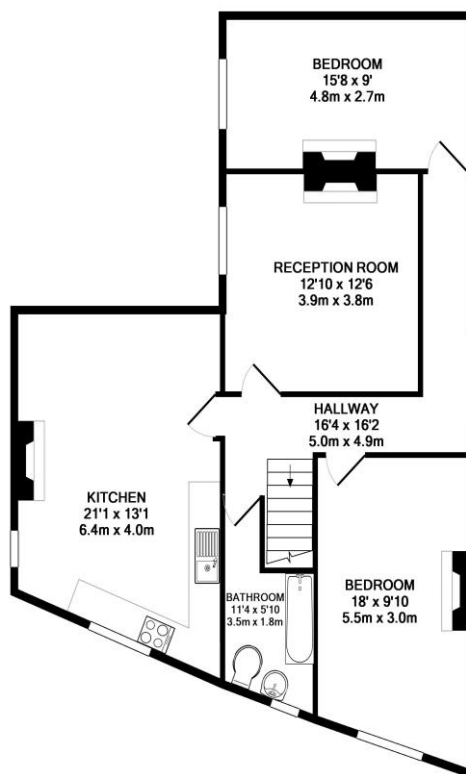


EPC: F

A Character filled Spacious Maisonette | Private access leading to first floor accommodation | Two double bedrooms | Large Kitchen/Breakfast Room with appliances | Living room | Main bathroom | GCH | Allocated off-road parking | Walking distance to Milford train station and local shops | Available early October



GROUND FLOOR
APPROX. FLOOR
AREA 62 SQ.FT.
(5.8 SQ.M.)



1ST FLOOR
APPROX. FLOOR
AREA 895 SQ.FT.
(83.1 SQ.M.)

TOTAL APPROX. FLOOR AREA 957 SQ.FT. (88.9 SQ.M.)

Whilst every attempt has been made to ensure the accuracy of the floor plan contained here, measurements of doors, windows, rooms and any other items are approximate and no responsibility is taken for any error, omission, or mis-statement. This plan is for illustrative purposes only and should be used as such by any prospective purchaser. The services, systems and appliances shown have not been tested and no guarantee as to their operability or efficiency can be given

Made with Metropix ©2010