



Mayfair Gardens, London, N17
£575,000 Freehold

Anthony Webb
ESTATE AGENTS

Mayfair Gardens, London, N17

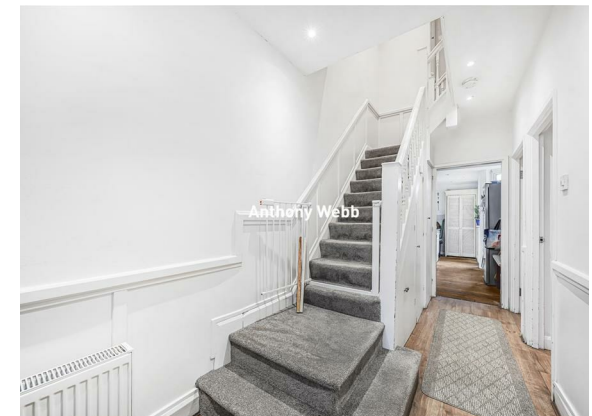
Conveniently nestled on the borders of Palmers Green and Tottenham, we are pleased to offer this three bedroom round bay 1930s built terrace house offering in excess of 1100sq ft. The property offers great potential to extend to rear and into the loft space subject to usual consents.

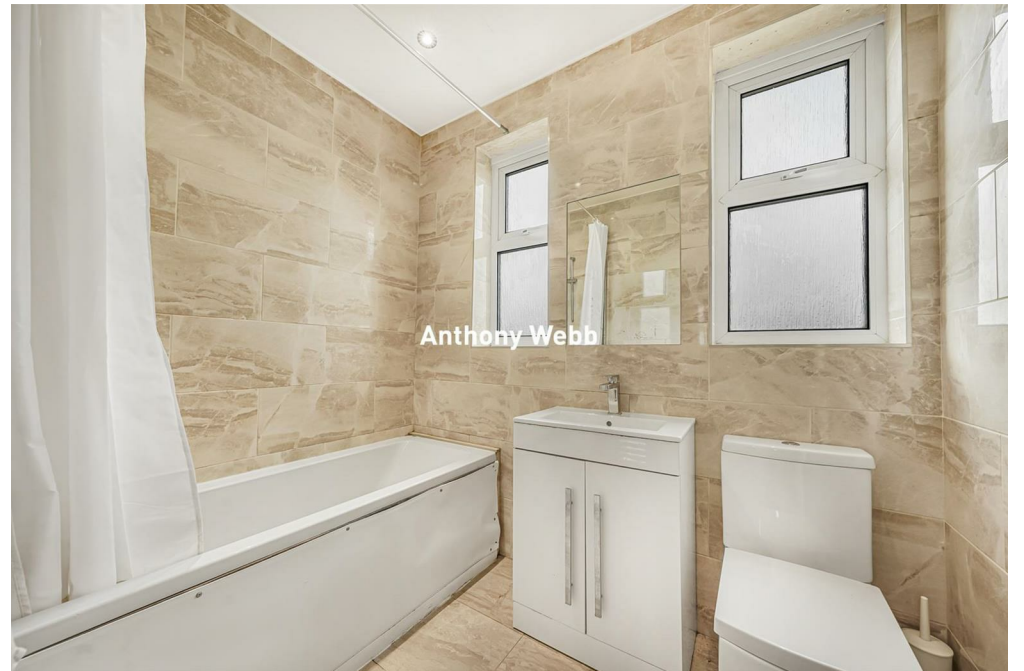
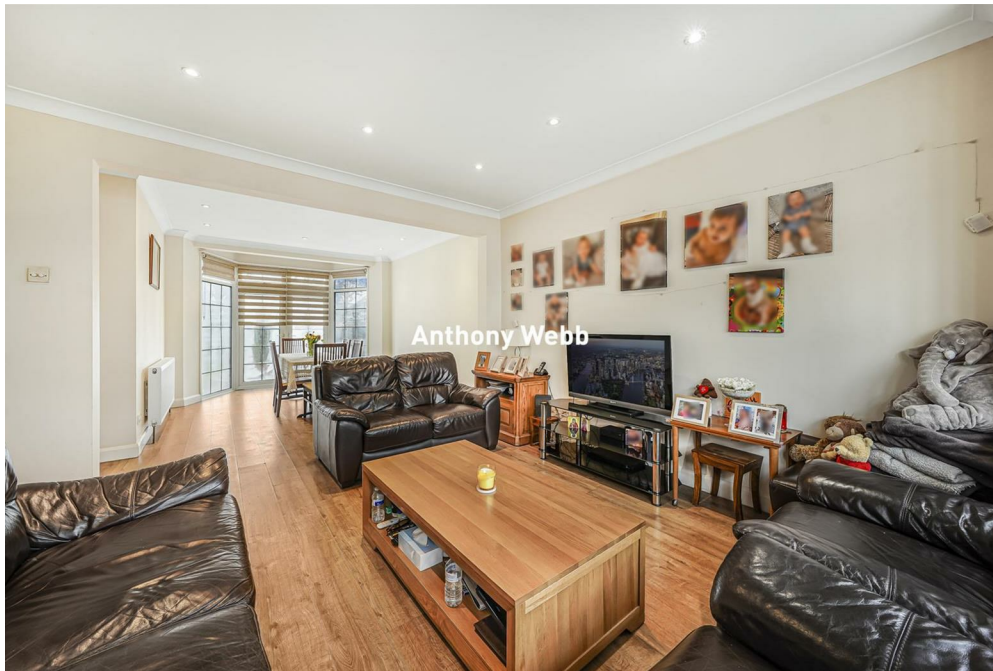
Ideally located close to excellent transport links, including the A10 dual carriageway, A406, White Hart Lane Station, and Wood Green Underground Station, the property also benefits from numerous local schools, shops, and amenities. Frequent bus routes provide easy access to Central London and surrounding areas.

Front garden • Hallway with stairs to first floor • Spacious through lounge with bay windows and access to garden • Galley kitchen which requires updating with door to garden • First floor landing with access to loft space • Two good size double bedrooms with bay windows • Single bedroom • Modern family bathroom • Mostly double glazed • Gas central heating • 90ft rear garden with patio area and outside w.c.

Haringey Council Tax Band D

- Three bedrooms
- 1930s built terrace house
- Through lounge
- Kitchen
- Modern family bathroom
- Gas central heating/double glazing
- Front and rear gardens
- Excellent road links via the A10 and A406



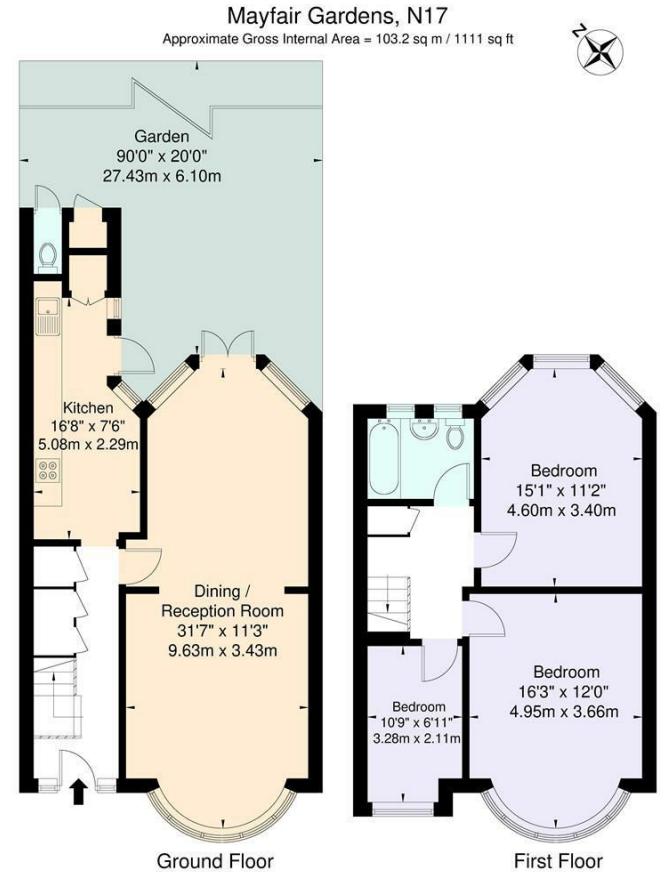


Mayfair Gardens London N17 7LP

Tenure: Freehold
Gross Internal Area: 1111.00 sq ft



Energy Efficiency Rating		Current	Potential
Very energy efficient - lower running costs			
(92 plus) A			81
(81-91) B		71	
(69-80) C			
(55-68) D			
(39-54) E			
(17-38) F			
(1-20) G			
Not energy efficient - higher running costs			
England & Wales		EU Directive 2002/91/EC	
Environmental Impact (CO ₂) Rating		Current	Potential
Very environmentally friendly - lower CO ₂ emissions			
(92 plus) A			
(81-91) B			
(69-80) C			
(55-68) D			
(39-54) E			
(21-38) F			
(1-20) G			
Not environmentally friendly - higher CO ₂ emissions			
England & Wales		EU Directive 2002/91/EC	



For Illustration Purposes Only - Not To Scale
This floor plan should be used as a general outline for guidance only and does not constitute in whole or in part an offer or contract. Any intending purchaser or lessee should satisfy themselves by inspection, enquiries and full survey as to the correctness of each statement. Any areas, measurements or distances quoted are approximate and should not be used to value a property or be the basis of any sale or let.

Property particulars as supplied by Anthony Webb Estate Agents are set out as a general outline in accordance with the Property Misdescriptions Act (1991) only for the guidance of intending purchasers of lessees, and do not constitute any part of an offer or contract. Details are given without any responsibility, and any intending purchasers, lessees or third parties should not rely on them as inspection or otherwise as to the correctness of each of them. We have not carried out a structural survey and the services, appliances and specific fittings have not been tested. All photographs, measurements, floor plans and distances referred to are given as a guide only and should not be relied upon for the purchase of carpets or any other fixtures statements or representations of fact, but must satisfy themselves by or of fittings, gardens, roof terraces, balconies and communal gardens as well as tenure and lease details cannot have their accuracy guaranteed for intending purchasers. Lease details, service ground rent (where applicable) are given as a guide only and should be checked and confirmed by your solicitor prior to exchange of contracts. No person in the employment of Anthony Webb has any authority to make any representation or warranty whatever in relation to this property.

348 Green Lanes, Palmers Green, London N13 5TJ
020 8882 7888
palmersgreen@anthonywebb.co.uk
anthonywebb.co.uk