



**Price**  
**£350,000**

**Leasehold**

2x  1x  1x 

**Knebworth House,  
Chingford Road,  
Walthamstow, E17**

**OVER 60?**

Secure this property  
for up to **59% less!**

 **DOUGLAS  
ALLEN**  
Helping you move forwards



## Main features

- Two double bedroom split level flat
- Chain-free
- Communal gardens & balcony
- Great transport links
- Within close proximity to Lloyd Park

## Accommodation

### FIRST FLOOR

Lounge/Diner: 14'7 x 12'3 (4.45m x 3.74m)

Kitchen: 10'7 x 10'1 (3.23m x 3.08m)

### SECOND FLOOR

Bedroom 1: 12'2 x 11'7 (3.71m x 3.53m)

Bedroom 2: 13'3 x 7'9 (4.04m x 2.36m)

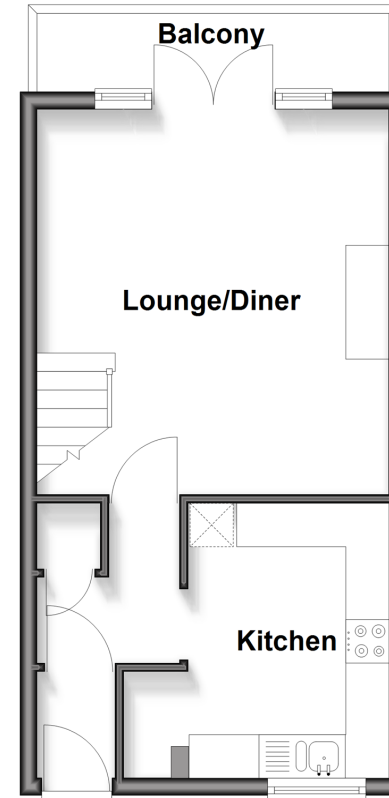
Family Bathroom

### OUTSIDE

Balcony Off Lounge  
Communal Gardens

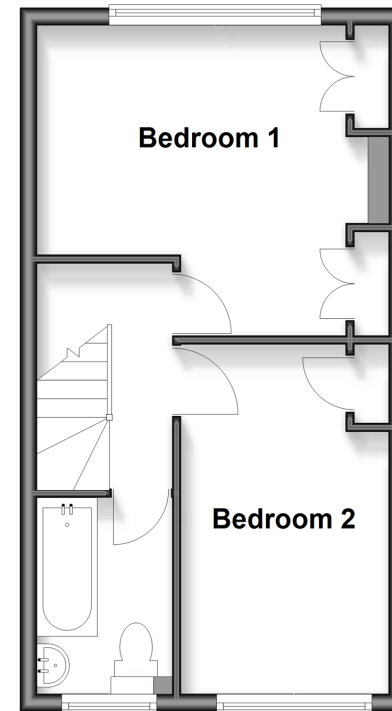
## First Floor

Approx. 31.4 sq. metres (338.1 sq. feet)  
(excluding Balcony)



## Second Floor

Approx. 31.4 sq. metres (338.1 sq. feet)



Call Walthamstow - 020 8509 0092 ■ [douglasallen.co.uk](http://douglasallen.co.uk)

- If buying to rent, please check if Local Authority licensing schemes apply before proceeding
- Through a Homewise Home For Life Plan people aged 60+ can secure this property for up to 59% less, by purchasing a Lifetime Lease



53100E12/20260506/KS/RUM