

ehB
RESIDENTIAL

Your Property - Our Business

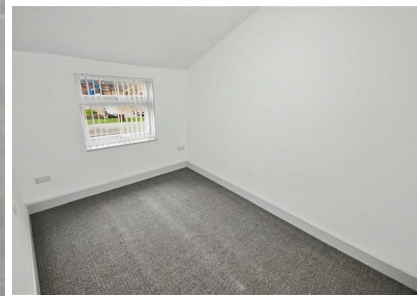
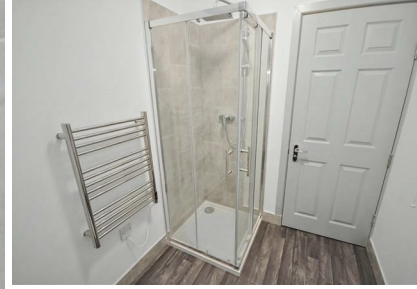


Flat A, 2, Lime Avenue, Leamington Spa

£850 Per Month



First floor completely renovated one bedroom apartment in the popular north Leamington area, with excellent access to local amenities and the town centre.




Your Property - Our Business

- Residential Estate Agents
- Lettings and Property Managers
- Land and New Homes Agents

Leamington Spa Office
Somerset House
Clarendon Place
Royal Leamington Spa
CV32 5QN

01926 881144 ehbresidential.com

Energy Efficiency Rating		
	Current	Potential
Very energy efficient - lower running costs		
(92 plus) A		
(81-91) B		
(69-80) C		
(55-68) D		
(39-54) E		
(21-38) F		
(1-20) G		
Not energy efficient - higher running costs		
England & Wales	EU Directive 2002/91/EC	

Also at: Warwick, 17-19 Jury St, Warwick CV34 4EL