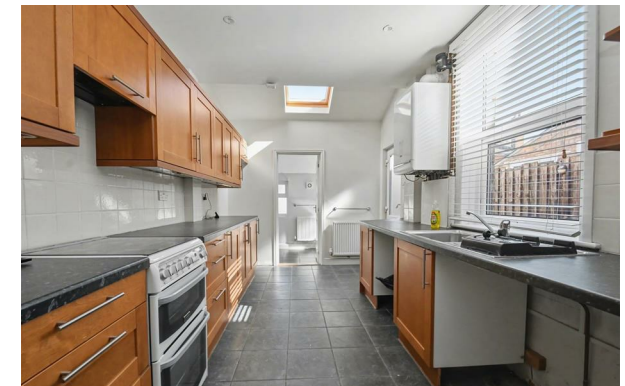


KEYSTONE



Wellesley Road, Ipswich, IP4 1PH

£1,195 PCM

- Unfurnished three bedroom house
- Fitted kitchen
- Front & rear gardens
- EPC rating D
- Entrance hall
- Ground floor bathroom with a shower
- Gas central heating & Double Glazed
- Lounge & Dining room
- Three large bedrooms
- Available NOW



GROUND FLOOR
APPROX. FLOOR
AREA 152 SQ.FT.
(14.0 SQ.M.)



FIRST FLOOR
APPROX. FLOOR
AREA 113 SQ.FT.
(10.5 SQ.M.)

TOTAL APPROX. FLOOR AREA 265 SQ.FT. (24.5 SQ.M.)

When every effort has been made to ensure the accuracy of the floor plan contained here, measurements of floors, walls, windows and doors may differ slightly from those shown on the plan. The floor plan is for information only and does not constitute an offer of any property. The services, systems and appliances shown have not been tested and no guarantee can be given as to their operation or efficiency. Call the agent for more information.

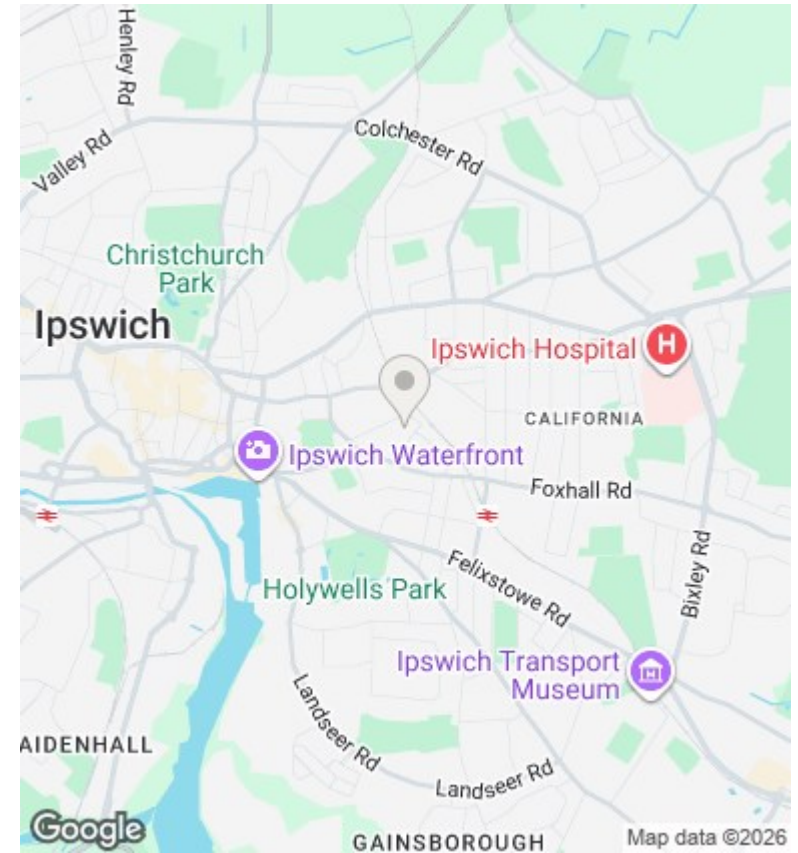
Directions

Viewings

Viewings by arrangement only. Call 01473 221 399 to make an appointment.

EPC Rating:

D



Energy Efficiency Rating

	Current	Potential
<i>Very energy efficient - lower running costs</i>		
(92 plus) A		
(81-91) B		83
(69-80) C		
(55-68) D	63	
(39-54) E		
(21-38) F		
(1-20) G		
<i>Not energy efficient - higher running costs</i>		
England & Wales	EU Directive 2002/91/EC	