



HARBOROUGH ROAD, SW16

£495,000

- Victorian
- Two double bedrooms
- Immaculate condition
- Share of freehold
- Popular road nearby amenities
- Energy rating: C







## ABOUT THE HOME

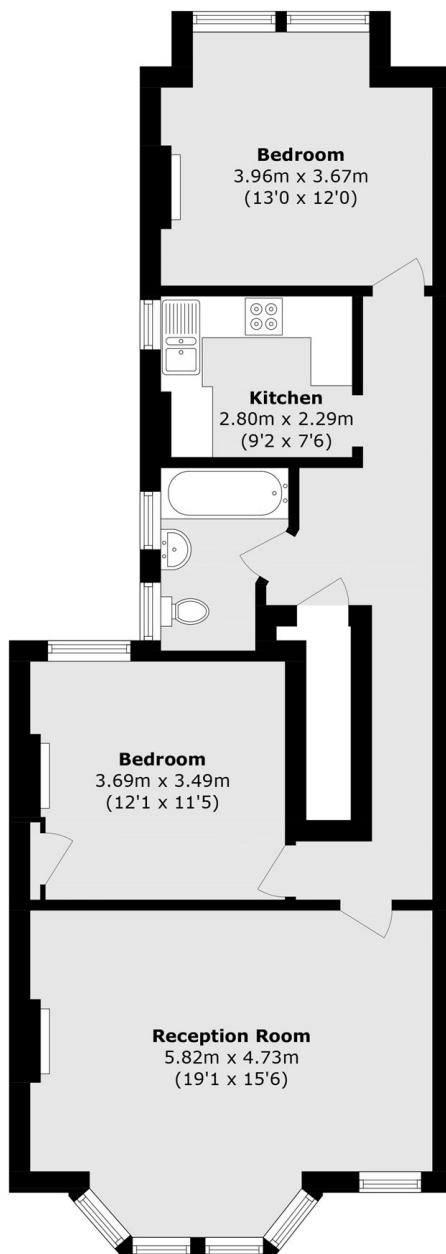
An immaculate two-bedroom Victorian conversion flat on a popular tree lined residential street in the Streatham area. The property benefits from an abundance of natural light and space throughout and has been renovated to a great standard. There is also extension potential into the loft.

Harborough Road is widely regarded as one of the most popular streets in Streatham. Nearby amenities include; numerous cafés, restaurants, bars and both independent and high street retailers. Frequent railway services from Streatham Hill provide easy access to Victoria via Clapham Junction and multiple bus routes leading into Brixton for the Victoria Line, whilst Streatham station offers regular services into London Bridge and Blackfriars via the Thameslink line.









Total area (approx.): 75.5 sq. m (709.3 sq. ft)

### JACKSONS STREATHAM

1-3 De Montfort Parade,  
Streatham High Road,  
Sales: 020 8487 3179  
Lettings: 020 8487 3180

Energy Rating: C We aim to make our particulars both accurate and reliable. However they are not guaranteed; nor do they form part of an offer or contract. If you require clarification on any points then please contact us, especially if you're traveling some distance to view. Please note that appliances and heating systems have not been tested and therefore no warranties can be given as to their good working order.