



Price

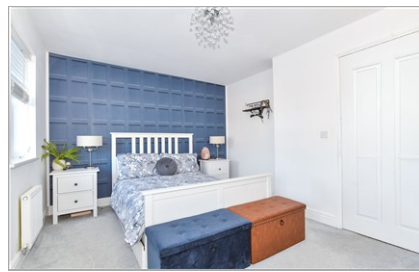
£274,995

Freehold

2x  1x  1x 

**Morris Close, Boughton
Monchelsea, Maidstone,
Kent, ME17**

Wards
Helping you move forwards



Main features

- Beautifully presented, ready to move straight into
- Private rear garden perfect to relax in, in the summer months
- Short walk to local shops and amenities with scenic countryside on your doorstep
- Ideal home to take your first step onto the property ladder, or as a buy to let investment
- NO FORWARD CHAIN

Accommodation

GROUND FLOOR

Entrance Hall
 Downstairs Cloakroom: 6'10 x 3'3 (2.08m x 0.99m)
 Kitchen: 9'1 x 6'8 (2.77m x 2.03m)
 Lounge/Diner: 14'8 x 14'7 (4.47m x 4.45m)

FIRST FLOOR

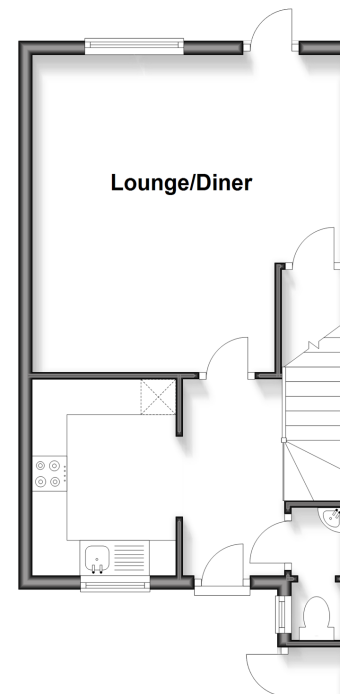
Landing
 Bedroom 1: 14'6 x 10'6 (4.42m x 3.20m)
 Bedroom 2: 11'6 x 8'1 (3.51m x 2.47m)
 Bathroom: 6'3 x 6'2 (1.91m x 1.88m)

OUTSIDE

Off Road Parking
 Front and Rear Gardens
 Storage

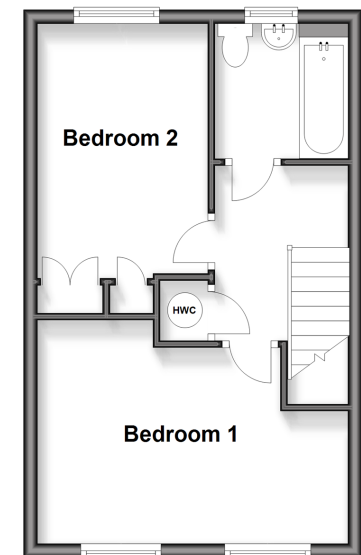
Ground Floor

Approx. 34.4 sq. metres (370.4 sq. feet)



First Floor

Approx. 33.0 sq. metres (355.6 sq. feet)



Call Loose - 01622 744067 ■ wardsof Kent.co.uk

■ Legal advice should be taken to verify fixtures/fittings, planning, alterations and/or lease details

■ Appliances & services are untested, dimensions are approximate and floor plans are not to scale



13022333/20260108/KIR/VMK