



## Hythe Road, KT6

£399,950

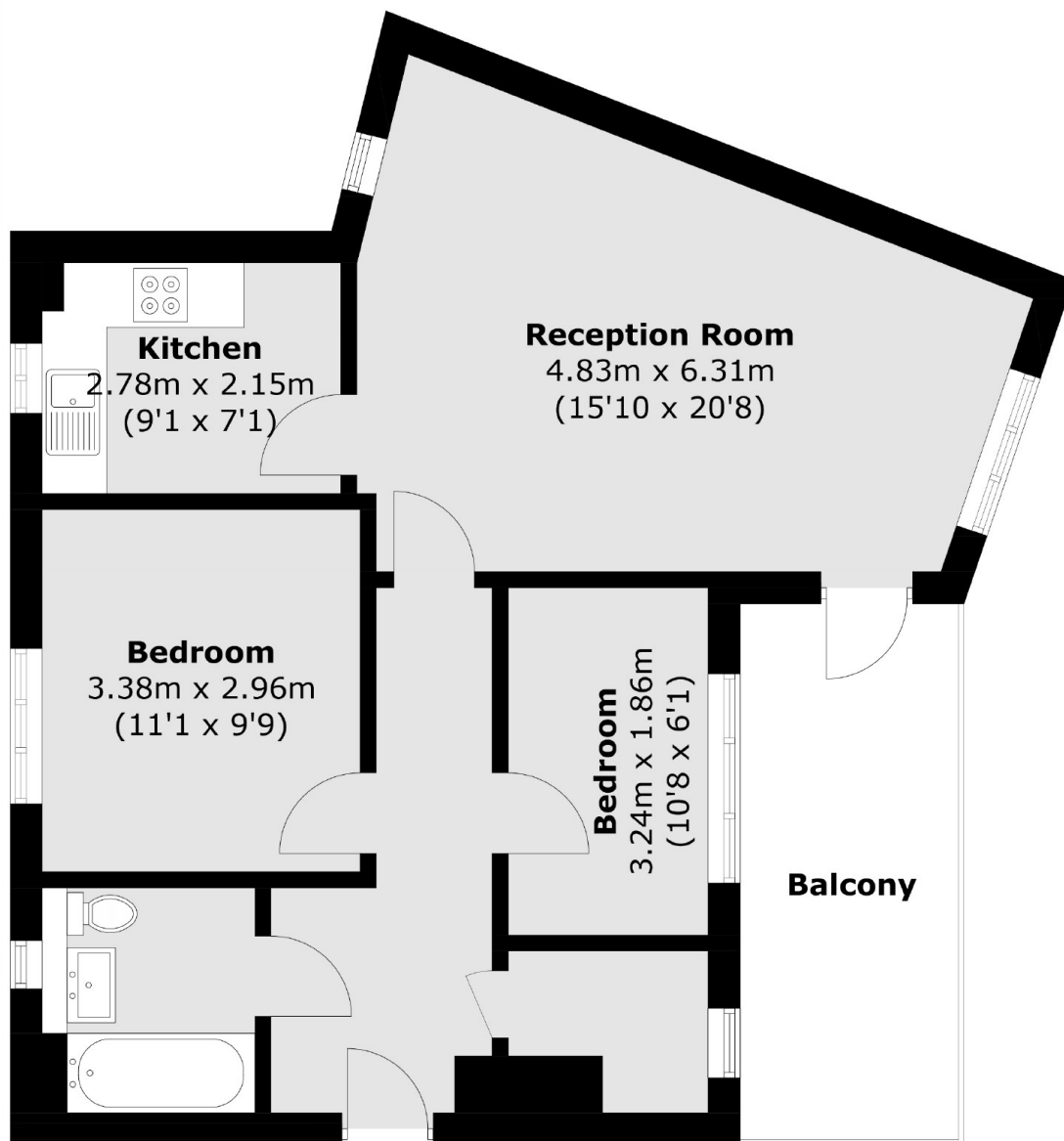
This modern top floor two bedroom apartment is located in a peaceful location in central Surbiton. The property has a spacious living room with dining area, modern separate kitchen, two double bedrooms, a good sized bathroom and a private balcony with panoramic views of Surbiton and beyond. The property further benefits from a lift, allocated parking and no onward chain.

Hythe Road is a quiet and peaceful road tucked away just 0.1 miles from Surbiton train station with it's fast links into London. The high street with its bars, cafes restaurants, bus stops and shops is just 0.2 miles away.

### Features

- Well Presented
- Top Floor with Lift
- Close To Station
- Two Double Bedrooms
- Private Balcony
- Allocated Parking

# Hythe Road, Surbiton, KT6



Total area (approx.): 62.2 sq. m (669.5 sq. ft)  
Balcony area (approx.): 10.2 sq. m (109.7 sq. ft)