



Dean Ryle Street, SW1P

£800,000

This stunning one bedroom apartment is situated on the fifth floor with wonderful views of St Johns Gardens. Positioned within a modern development with concierge services.

Dean Ryle Street is located a few minutes from Smith Square and St John's Garden Square. Transport links are excellent with Westminster and St James's Park and Victoria nearby.

Features

- Concierge Service
- Views of Gardens
- High Ceilings
- Lift
- Gym
- Business Centre



Dean Ryle Street, SW1P

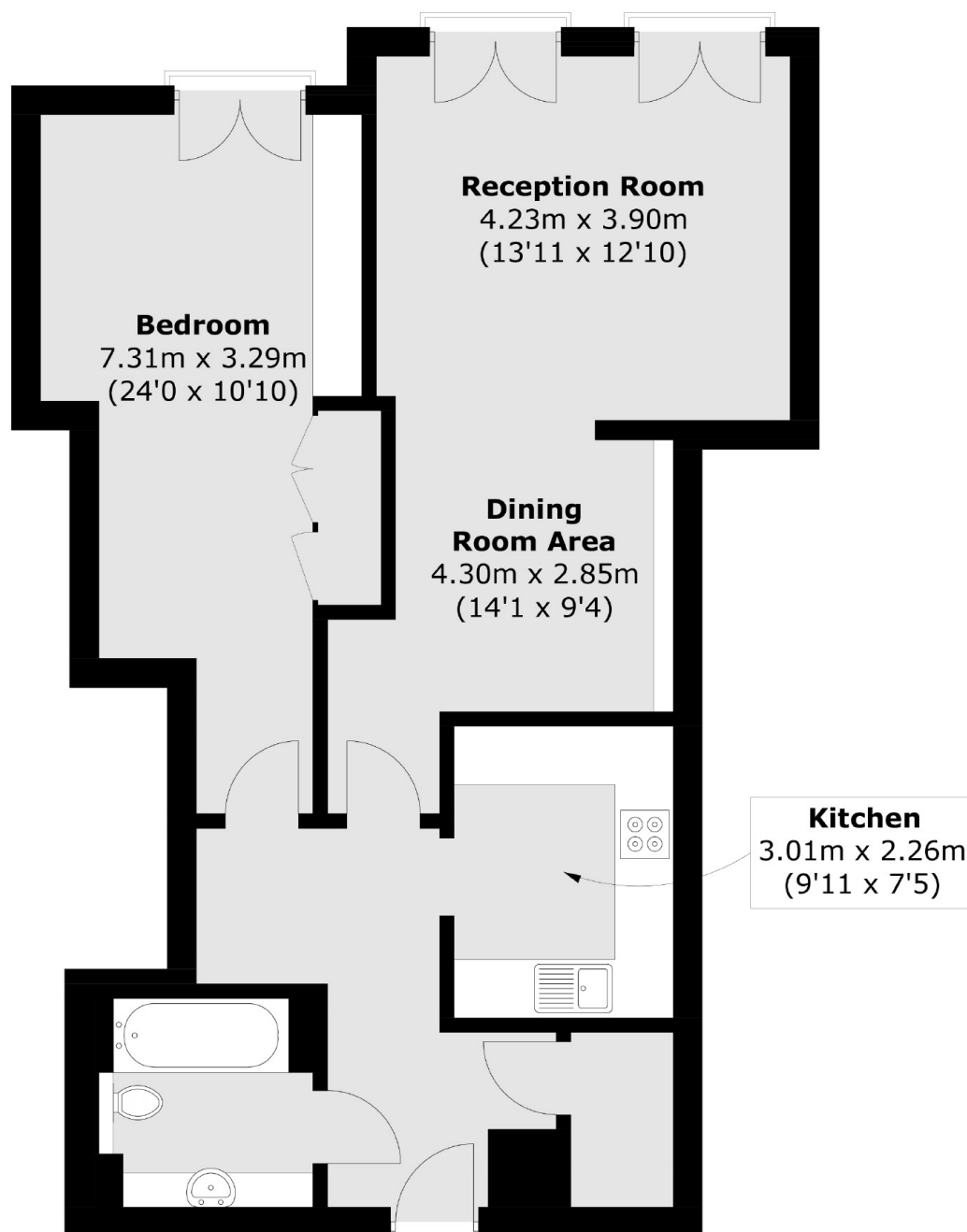
Westminster Green is a prestigious residential development in the heart of Westminster with The Tate Gallery and The Palace of Westminster within easy reach.

This apartment has exceptionally high ceilings and spacious rooms. There are two Juliet balconies with glass floor to ceiling casement doors in the reception room, a good size dining room area and wooden floors. A large bedroom with a Juliet balcony, glass casement doors and fitted wardrobes. A fully fitted kitchen and a contemporary bathroom.

The development offers 24 hour concierge service and the opportunity to book the business centre for meeting or entertaining, there is also a gym for residents.



Dean Ryle Street, London, SW1P



Total area (approx.): 71.8 sq. m (773 sq. ft)