



Guide Price
£185,000

Leasehold

2x  1x  1x 

**Goldsmere Court,
Fentiman Way,
Hornchurch, Essex,
RM11**



Main features

- Second floor two double bedroom over 60's retirement flat
- Water bills included in the service charge
- Communal Lounge & gardens
- Guest suite available for visitors
- Well kept communal grounds
- 24 hour emergency care line & in house site manager
- 2 Lifts accessing all floors
- New carpets in the lounge & hallway & new flooring in the shower room
- Plenty of inbuilt storage

Accommodation

GROUND FLOOR

Communal Lounge

GUEST SUITE

Available to Hire

SECOND FLOOR

Hallway

Lounge/Dining Room: 16'0 x 11'3 (4.88m x 3.43m)

Kitchen: 7'4 x 6'8 (2.24m x 2.03m)

Bedroom 1: 16'10 x 9'4 (5.13m x 2.85m)

Bedroom 2: 16'11 x 8'4 (5.16m x 2.54m)

Shower Room

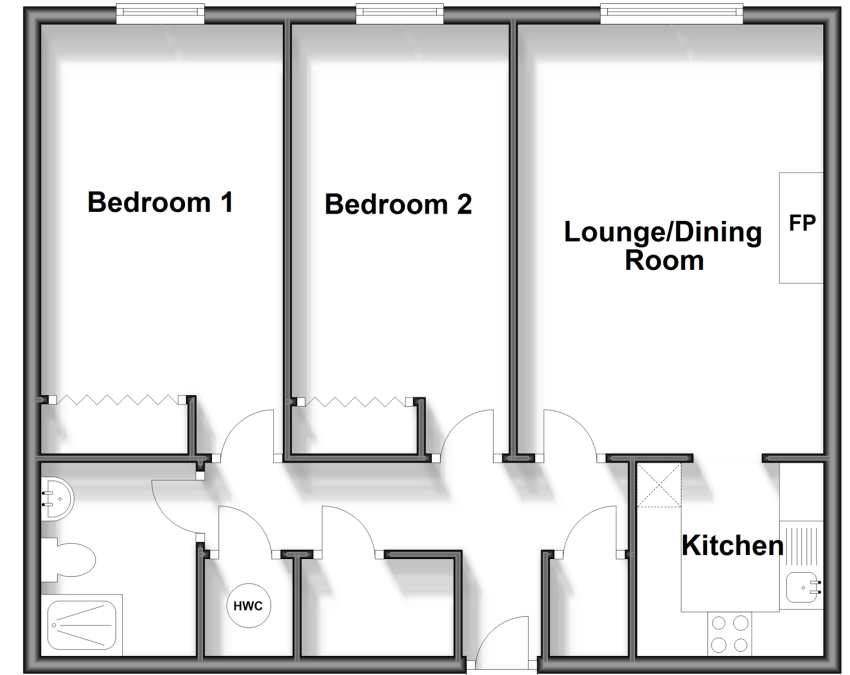
OUTSIDE

Communal Gardens

Residential Parking

Second Floor

Approx. 63.4 sq. metres (682.0 sq. feet)



Call Hornchurch - 01708 437777 ■ douglasallen.co.uk

- A private rental licensing scheme applies to some properties in this area, please contact us before proceeding
- Appliances & services are untested, dimensions are approximate and floor plans are not to scale

- Legal advice should be taken to verify fixtures/fittings, planning, alterations and/or lease details



51916034/20251027/CC1/DT