



COLUMBIA HOUSE

£125,000

Columbia House, Romany Road

Worthing, BN13 3YS

## PROPERTY SUMMARY

**\*\*Being Sold via Secure Sale online bidding. Terms & Conditions apply. Starting Bid £125,000\*\***

We are delighted to bring to the market this modern fourth-floor flat located on Romany Road in the charming town of Worthing. This stylish apartment, built in 2022, offers a contemporary living experience with a well-designed layout that maximises space and comfort.

One of the standout features of this property is the stunning views that the flat has to offer and the added bonus of an allocated parking space, which is a rare find in such a desirable location. The low service charges make this flat an attractive option for both first-time buyers and investors alike.

Situated close to the David Lloyds gym, residents can enjoy easy access to fitness facilities and leisure activities.

With a long lease in place, this property presents an excellent opportunity for those seeking a modern lifestyle in a vibrant community. Whether you are looking to buy or rent, Columbia House is a fantastic choice for anyone wanting to enjoy the best of Worthing living.

1

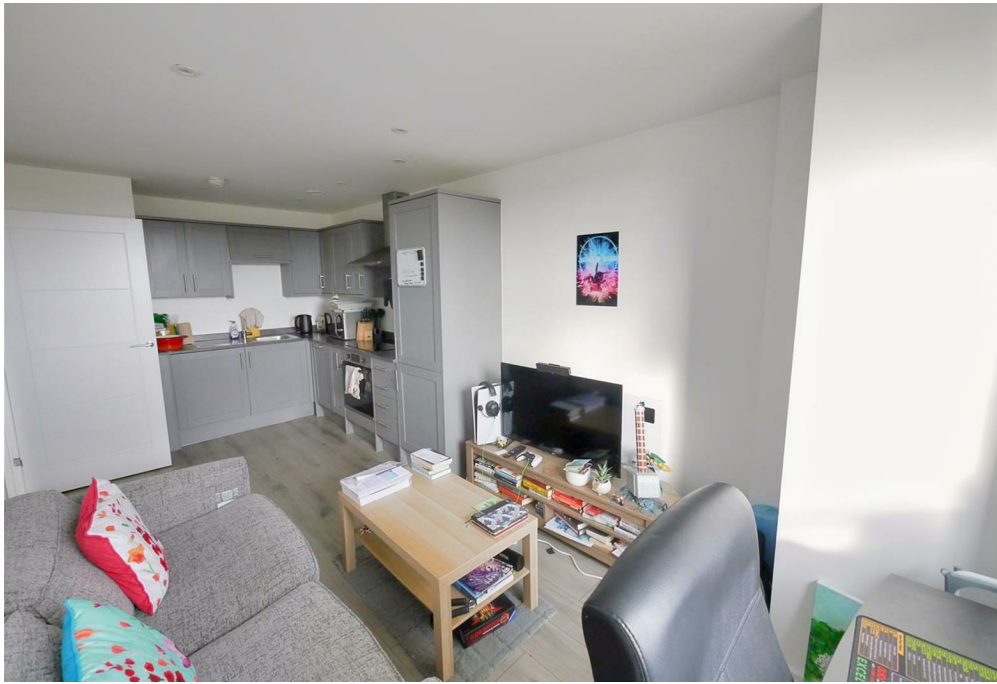


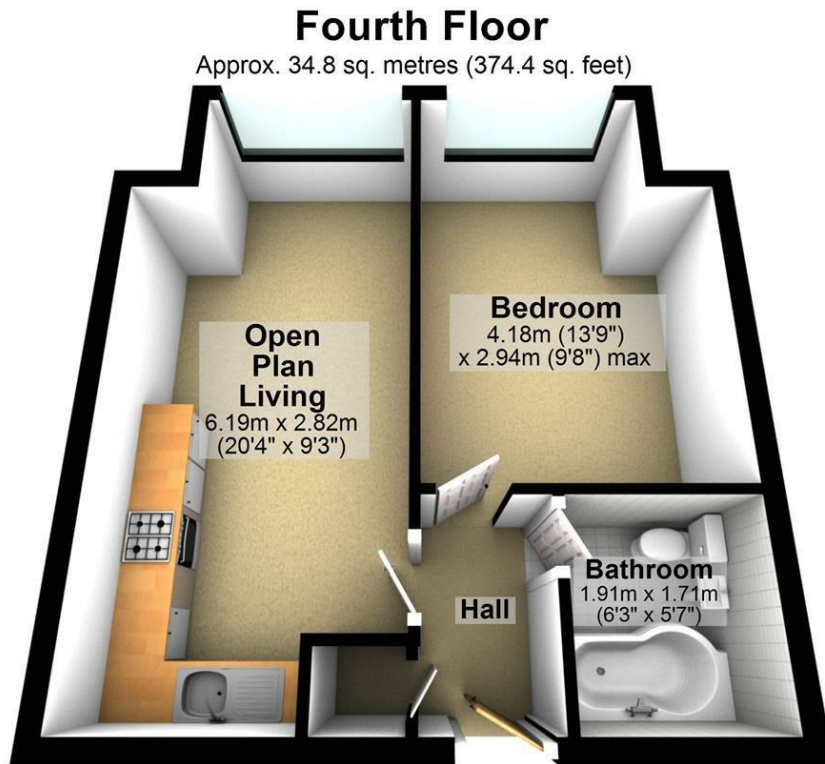
1



1







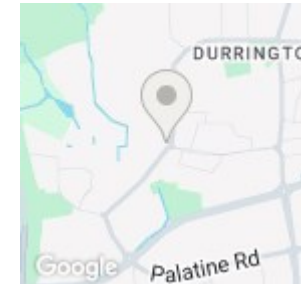
Total area: approx. 34.8 sq. metres (374.4 sq. feet)

LOCAL AUTHORITY

TENURE  
Leasehold

COUNCIL TAX BAND  
A

VIEWINGS  
By prior appointment only



Energy Efficiency Rating		
	Current	Potential
Very energy efficient - lower running costs		
(92 plus) <b>A</b>		
(81-91) <b>B</b>		
(69-80) <b>C</b>	77	77
(55-68) <b>D</b>		
(39-54) <b>E</b>		
(21-38) <b>F</b>		
(1-20) <b>G</b>		
Not energy efficient - higher running costs		
<b>England &amp; Wales</b>	EU Directive 2002/91/EC	

Agents Note: Whilst every care has been taken to prepare these particulars, they are for guidance purposes only. All measurements are approximate and are for general guidance purposes only and whilst every care has been taken to ensure their accuracy, they should not be relied upon and potential buyers/tenants are advised to recheck the measurements