



The Terrace

Rochester | ME1 1XN

The Terrace

, Rochester, ME1 1XN

A beautifully presented four bedroom Grade II listed Townhouse set across four floors, seamlessly blending period charm and contemporary comfort.

Built in 1848, this characterful home retains original architectural details whilst offering modern living throughout. The spacious layout includes four generous double bedrooms, a stylish lounge, and open plan kitchen-diner - perfect for entertaining and daily family life. A well-appointed family bathroom and separate WC ensures practicality, while a small utility space adds convenience.

Outside, a private rear courtyard garden provides a quiet retreat, ideal for relaxing or al fresco dining.

Situated a short walk from the historic town of Rochester, with its charming High Street, iconic castle and cathedral, this home is perfectly located for both families and professionals. Kings School and St. Augustine's are both within easy walking distance, and excellent transport links, including high-speed rail services provide fast and direct access to London and the South East Coast.

£550,000



Entrance Hall

Bedroom

11'10 x 11'8 (3.61m x 3.56m)

Bedroom

11'11 x 9'4 (3.63m x 2.84m)

Sitting Room

14'7 x 11'8 (4.45m x 3.56m)

Bathroom

12'1 x 9'4 (3.68m x 2.84m)

Bedroom

14'7 x 11'8 (4.45m x 3.56m)

Bedroom

12'1 x 9'4 (3.68m x 2.84m)

Kitchen

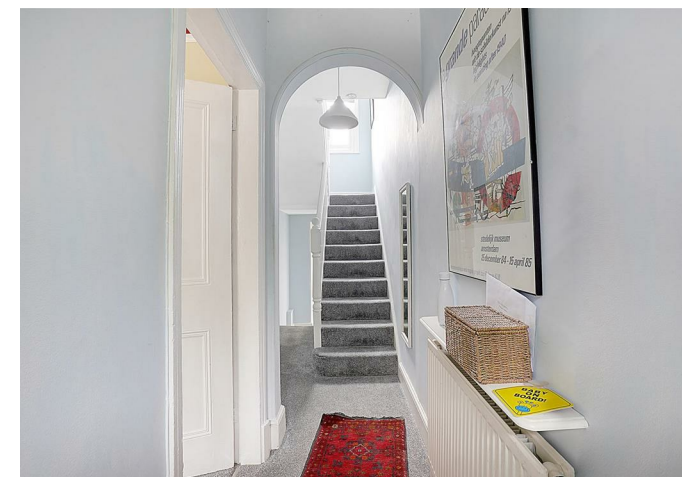
12'2 x 9'4 (3.71m x 2.84m)

Dining Room

14'7 x 11'7 (4.45m x 3.53m)

Utility Room

Cellar





TOTAL FLOOR AREA: 1443 sq.ft. (134.1 sq.m.) approx.

Whilst every attempt has been made to ensure the accuracy of the floorplan contained here, measurements of doors, windows, rooms and any other items are approximate and no responsibility is taken for any error, omission or mis-statement. This plan is for illustrative purposes only and should be used as such by any prospective purchaser. The services, systems and appliances shown have not been tested and no guarantee as to their operability or efficiency can be given.

Made with Metropix ©2025



18 - 20 High Street
Gillingham
Kent
ME7 1BB
01634 570057

www.crralestate.co.uk
twitter.com/CRRealEstateUK
facebook.com/CRRealEstateUK



CR Real Estate endeavour to maintain accurate depictions of properties in Virtual Tours, Floor Plans and descriptions, however, these are intended only as a guide and purchasers must satisfy themselves by personal inspection.