



Guide Price
£270,000

Freehold

2x  1x  2x 

**Kingston Crescent,
Lordswood, Chatham,
Kent, ME5**

OVER 60?

Secure this property
for up to **59% less!**

Wards
Helping you move forwards



Main features

- Refurbished throughout
- Extended to the rear offering spacious living accommodation
- Rear garden and additional land
- Great first time buy
- No chain

Accommodation

GROUND FLOOR

Entrance Hall

Kitchen : 12'6 x 7'9 (3.81m x 2.36m)

Lounge : 11'0 x 9'7 (3.36m x 2.92m)

Dining Area : 10'5 x 9'6 (3.18m x 2.90m)

FIRST FLOOR

Landing

Bedroom 1 : 11'0 x 7'6 (3.36m x 2.29m)

Bedroom 2 : 11'0 x 5'6 (3.36m x 1.68m)

Bathroom : 8'9 x 4'9 (2.67m x 1.45m)

OUTSIDE

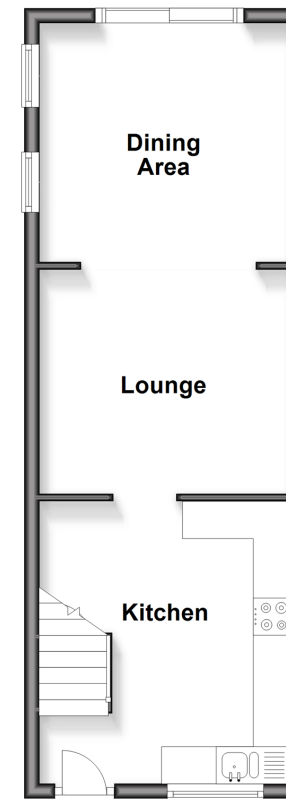
Front Garden

Rear Garden

Parking Space

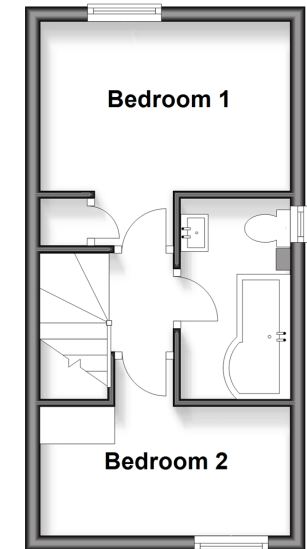
Ground Floor

Approx. 26.3 sq. metres (282.8 sq. feet)



First Floor

Approx. 23.6 sq. metres (253.5 sq. feet)



Call Walderslade - 01634 865661 ■ wardsofkent.co.uk

- Legal advice should be taken to verify fixtures/fittings, planning, alterations and/or lease details
- Appliances & services are untested, dimensions are approximate and floor plans are not to scale
- Through a Homewise Home For Life Plan people aged 60+ can secure this property for up to 59% less, by purchasing a Lifetime Lease



12140386/20260217/ML/AJB