



Let **UK** Home

**2 Bedrooms**

**Flat**

**Located in London**

**£18,417 Per Month**



[info@letukhome.co.uk](mailto:info@letukhome.co.uk)

<https://www.letukhome.co.uk/>

01795 358 886



# 65 Duke Street, Mayfair London

W1K 5NX



Let UK Home are excited to offer a stunning interior designed two-bedroom, north west facing duplex apartment, located in the heart of Mayfair.

This luxury duplex apartment has been finished to the highest of specifications using the finest materials and latest "smart home" technology. The apartment comprises two large double bedrooms, one with an en-suite, a large open-plan living area with a beautiful bespoke kitchen with integrated lighting, Gaggenau appliances along with natural oak flooring.

The Grade II listed building holds its classic original features and consists of a lift, a dedicated on-site concierge and storage lockers for all apartments.

Home to numerous famous hotspots and hotels, Mayfair is internationally regarded as a centre of sophistication and decadence. With a rich history, fine architecture and notable residence, a sense of opulence is maintained, set off further by the exciting leisure scenes that draw foodies, fashionistas and lovers of culture to this gorgeous location. Hyde Park provides entertainment in the form of fairs, horse riding, boating and music events, and the majestic Savoy, The Dorchester and its famous Grosvenor Ballroom all lie on the doorstep.

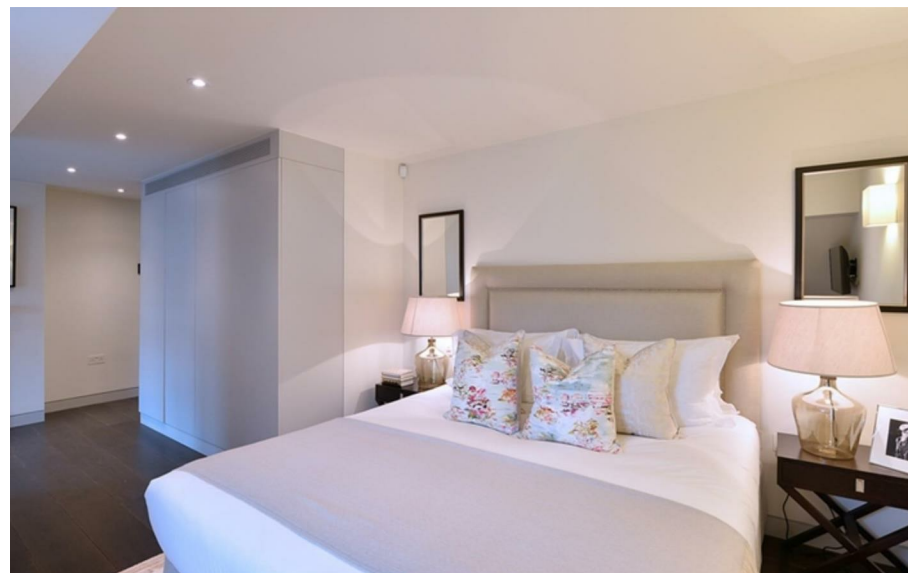
With its central location and excellent public transport facilities, Mayfair allows easy access to the rest of London. Nearby underground stations include Bond Street (Central and Jubilee lines), Marble Arch (Central Line), Green Park (Jubilee, Piccadilly and Victoria lines) and several regular and varied bus services further improve accessibility.

# 65 Duke Street, Mayfair London

£18,417 Per Month



- 4th floor
- Open plan living area
- Split level property
- Superfast Broadband
- 24 Hour Emergency Helpline & Service
- Interior Designed
- Dedicated building manager
- CCTV
- Pet Friendly
- Available Furnished & Unfurnished





**FOURTH FLOOR**



Let **UK** Home

3F 2 Eastbourne Terrace  
Paddington  
London  
W2 6LG

01795 358 886

info@letukhome.co.uk

**Council Tax Band: New Build**

**Local Authority:**

Agents Note: Whilst every care has been taken to prepare these particulars, they are for guidance purposes only. All measurements are approximate and are for general guidance purposes only and whilst every care has been taken to ensure their accuracy, they should not be relied upon and potential buyers/tenants are advised to recheck the measurements.

Energy Efficiency Rating		
	Current	Potential
Very energy efficient - lower running costs		
(92 plus) <b>A</b>		
(81-91) <b>B</b>		
(69-80) <b>C</b>		
(55-68) <b>D</b>		
(39-54) <b>E</b>		
(21-38) <b>F</b>		
(1-20) <b>G</b>		
Not energy efficient - higher running costs		
England & Wales		
EU Directive 2002/91/EC		

<https://www.letukhome.co.uk/>