



Green View | Newbiggin-On-Lune | Kirkby Stephen | CA17 4NS

Guide Price £379,950



**david britton**  
ESTATES





## Key Features

- Semi detached Cottage
- Three bedrooms, one en-suite WC
- Three reception rooms
- Kitchen
- Utility with WC
- Gardens
- Yorkshire Dales National Park
- Family bathroom

## Summary

Lovely three bedroomed, three reception roomed Cottage in the Heart of the Pretty Yorkshire Dales National Park Village of Newbiggin on Lune.

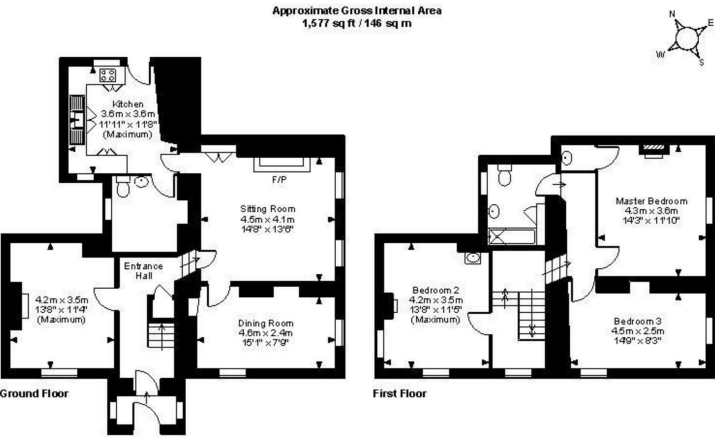








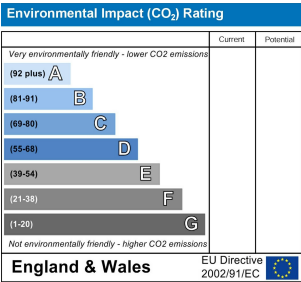
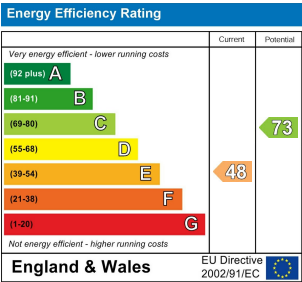
Floor plans



COUNCIL TAX BAND - E

DISCLAIMER

These particulars, whilst believed to be accurate are set out as a general guideline and do not constitute any part of an offer or contract. Intending Purchasers should not rely on them as statements of representation of fact but must satisfy themselves by inspection or otherwise as to their accuracy. The services, systems, and appliances shown may not have been tested and has no guarantee as to their operability or efficiency can be given. All floor plans are created as a guide to the lay out of the property and should not be considered as a true depiction of any property and constitutes no part of a legal contract.



Unit 3 Mason Court Gillan Way, Penrith 40 Business Park  
Penrith  
Cumbria  
CA11 9GR  
01768881111  
Sales@brittonestates.co.uk  
www.brittonestates.co.uk