



Russia Lane, E2

£475,000

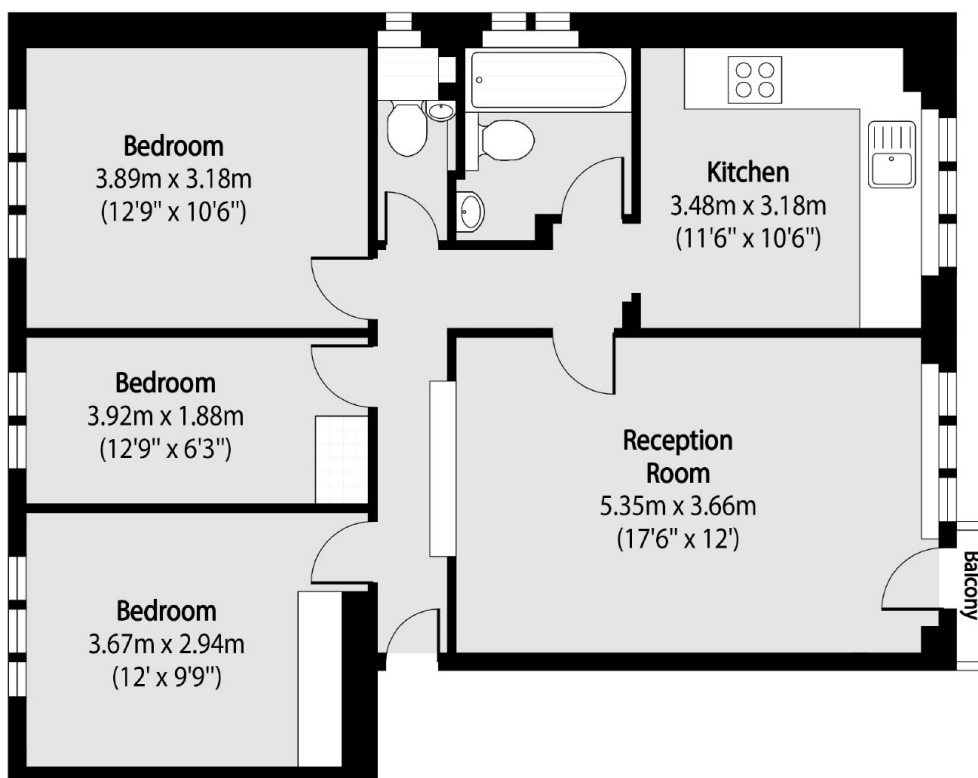
A three double bedroom lateral apartment with views of the city and close to Victoria Park. This property has a separate eat in kitchen, living room with ample space to dine and is west facing with a Juliette balcony.

Russia lane is quiet tree lined no through road. It is under a quarter of a mile from Victoria park and equidistant from Bethnal Green Station on the central line. There is an abundance of restaurants, shops and cafes locally in Bethnal green and around Victoria Park and Globe town.

Features

Offers In Excess Of
Three Double Bedrooms
Large Living Space
Close to Victoria Park
Cul De Sac
Juliette Balcony

Russia Lane, London, E2



Total area (approx): 76.14 sq m (820 sq. ft)