



Russell Road, SW19

£995,000

Dexters



Russell Road, SW19

An exceptional three double bedroom, end of terrace Victorian house presented in superb condition. The house is accessed from Harcourt Road, has a fully renovated bathroom and is close to Wimbledon Town.

The house has a side entrance, which allows more space in the double reception room. The front reception room is complete with shutter and a fireplace, with the rear reception staged as a dining room with views to the garden.

The first floor has a large fully renovated family bathroom, alongside two double bedrooms. The double to the front of the house has built in wardrobes and wonderful sash windows. The loft has been converted, offering a principle bedrooms and an ensuite shower room.

The garden is landscaped with paving, a raised rear boarder, large olive tree and side access.

Russell Road is a quiet road with restricted traffic flow near to Wimbledon Broadway. Perfectly located for young families, being in close proximity to the superb Pelham, St Mary's & Merton Park Primary Schools. Wimbledon Village is also nearby.

Features

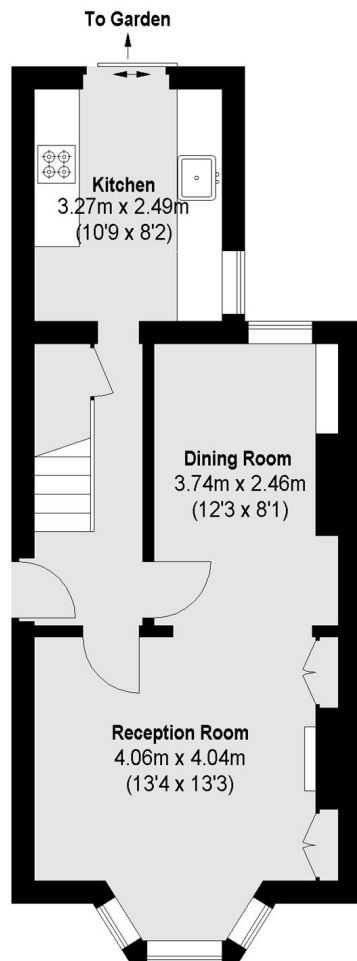
- End of Terrace
- Private Garden
- Double Reception Room
- Three Double Bedrooms
- Victorian Home
- The Ministers



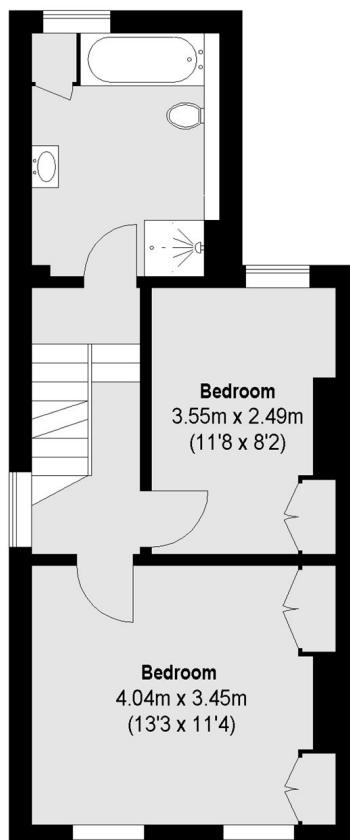




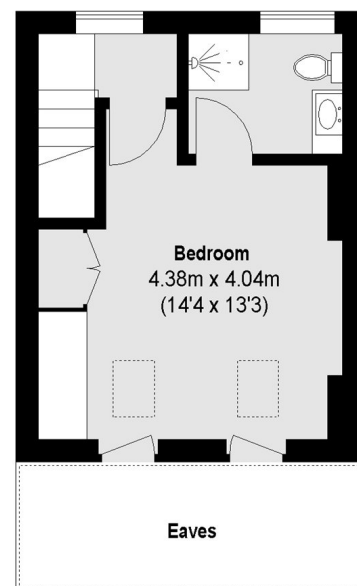
Russell Road, London, SW19



Ground Floor



First Floor



Second Floor

Total area (approx.): 98.79 sq. m (1063 Sq. ft)
(Excluding Eaves)