



Cilgerran Court

Offers in the Region of £180,000

- Offered with No Onward Chain
- Large Rear Garden with Patio and Lawn
- Family Bathroom and Downstairs Wc
- Two Reception Rooms, Four Bedrooms
- Close Proximity to Schools, Shops and Leisure Facilities
- Excellent Transport Links to Cwmbran Railway Station and the M4 Motorway Network



 4  2  2

Pinkmove

01633 746088
team@pinkmove.co.uk



About the property

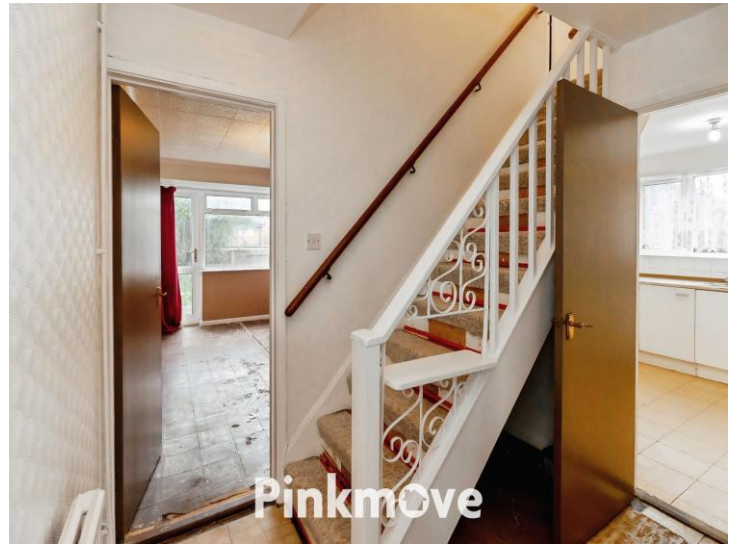
This four-bedroom mid-terrace home on Cilgerran Court, Llanyravon, Cwmbran offers generous living space and excellent potential for those seeking a family property to renovate and make their own. The ground floor features two versatile reception rooms, a fitted kitchen, and a convenient downstairs WC, providing flexibility for both family life and entertaining. Upstairs, you'll find four well-proportioned bedrooms and a family bathroom, ideal for growing households.

One of the standout features of this home is its substantial rear garden, complete with a patio and lawn area, perfect for outdoor dining, play, or future landscaping projects. While the property requires modernisation, its size and layout make it a fantastic opportunity to create a bespoke family home.

Cilgerran Court is situated in a sought-after residential area with excellent local amenities. Families will appreciate the proximity to reputable schools: Llanyrafon Primary School is approximately 0.2 miles away, Croesyceiliog School around 0.3 miles, and Our Lady of the Angels R.C. School within 0.8 miles. The location benefits from excellent transport links, with Cwmbran railway station just 0.7 miles away, and easy access to local shops, parks, and leisure facilities.

This property combines space, potential, and a prime location, making it an excellent choice for buyers looking to invest in a family-friendly area with strong community appeal.





Accommodation

Lounge

9' 9" x 14' 3" (2.97m x 4.34m)
Max Measurements

Dining Room

8' 4" x 9' 7" (2.54m x 2.92m)
Max Measurements

Kitchen

8' 6" x 10' 2" (2.59m x 3.10m)

Downstairs Wc

5' 3" x 2' 9" (1.60m x 0.84m)

Bedroom 1

10' 5" x 11' 11" (3.17m x 3.63m)

Bedroom 2

10' 8" x 11' 3" (3.25m x 3.43m)

Bedroom 3

8' 7" x 8' 10" (2.62m x 2.69m)

Bedroom 4

8' 6" x 8' 2" (2.59m x 2.49m)

Bathroom

5' 8" x 6' 11" (1.73m x 2.11m)

Floorplan

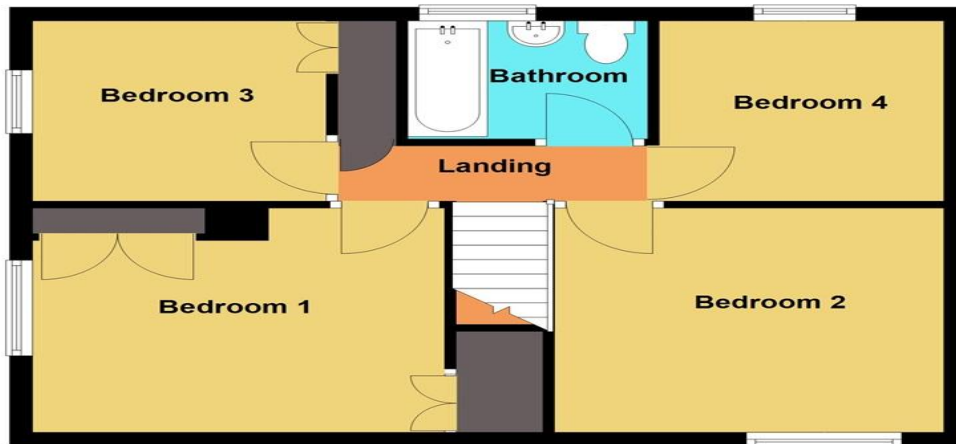
Ground Floor

Approx. 49.8 sq. metres (535.6 sq. feet)



First Floor

Approx. 47.9 sq. metres (515.2 sq. feet)



Total area: approx. 97.6 sq. metres (1050.8 sq. feet)
9 Cilgerran Court

Important Information

Note while we endeavour to make our sales details accurate and reliable, if there is any point which is of particular interest to you, please contact the office and we will be pleased to confirm the position for you. We have not personally tested any apparatus, equipment, fixtures, fittings or services and cannot verify they are in working order or fit for their purposes. Nothing in these particulars is intended to indicate that carpets or curtains, furnishings or fittings, electrical goods (whether wired or not). Gas fires or light fittings or any other fixtures not expressly included form part of the property offered for sale. This computer generated Floorplan, if applicable, is intended as a general guide to the layout and design of the property. It is not to scale and should not be relied upon for dimensions. Tenure: We cannot confirm the tenure of the property as we have not had access to the legal documents. The buyer is advised to obtain verification from their solicitor or surveyor.

Peter Alan Limited is registered in England and Wales under company number 2073153, Registered Office is Cumbria House, 16-20 Hockliffe Street, Leighton Buzzard, Bedfordshire, LU7 1GN. VAT Registration Number is 500 2481 05. For activities relating to regulated mortgages and non-investment insurance contracts, Peter Alan Limited is an appointed representative of Connells Limited which is authorised and regulated by the Financial Conduct Authority. Connells Limited's Financial Services Register number is 302221. Most buy-to-let

