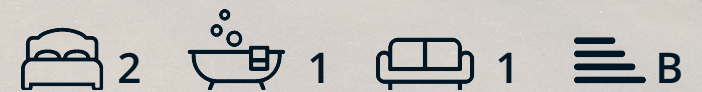




41 Weavers Road
Darley Dale, Matlock, DE4 2FU

£250,000



41 Weavers Road

Darley Dale, Matlock, DE4 2FU

A well presented 2 bedroom semi detached property, featuring 688 sqft of living accommodation. Located within close proximity of local amenities, the property benefits from a rear garden and patio seating area and a driveway providing off street parking for two vehicles.

The ground floor comprises; Entrance hallway and downstairs WC, front aspect living room and open plan kitchen dining area with

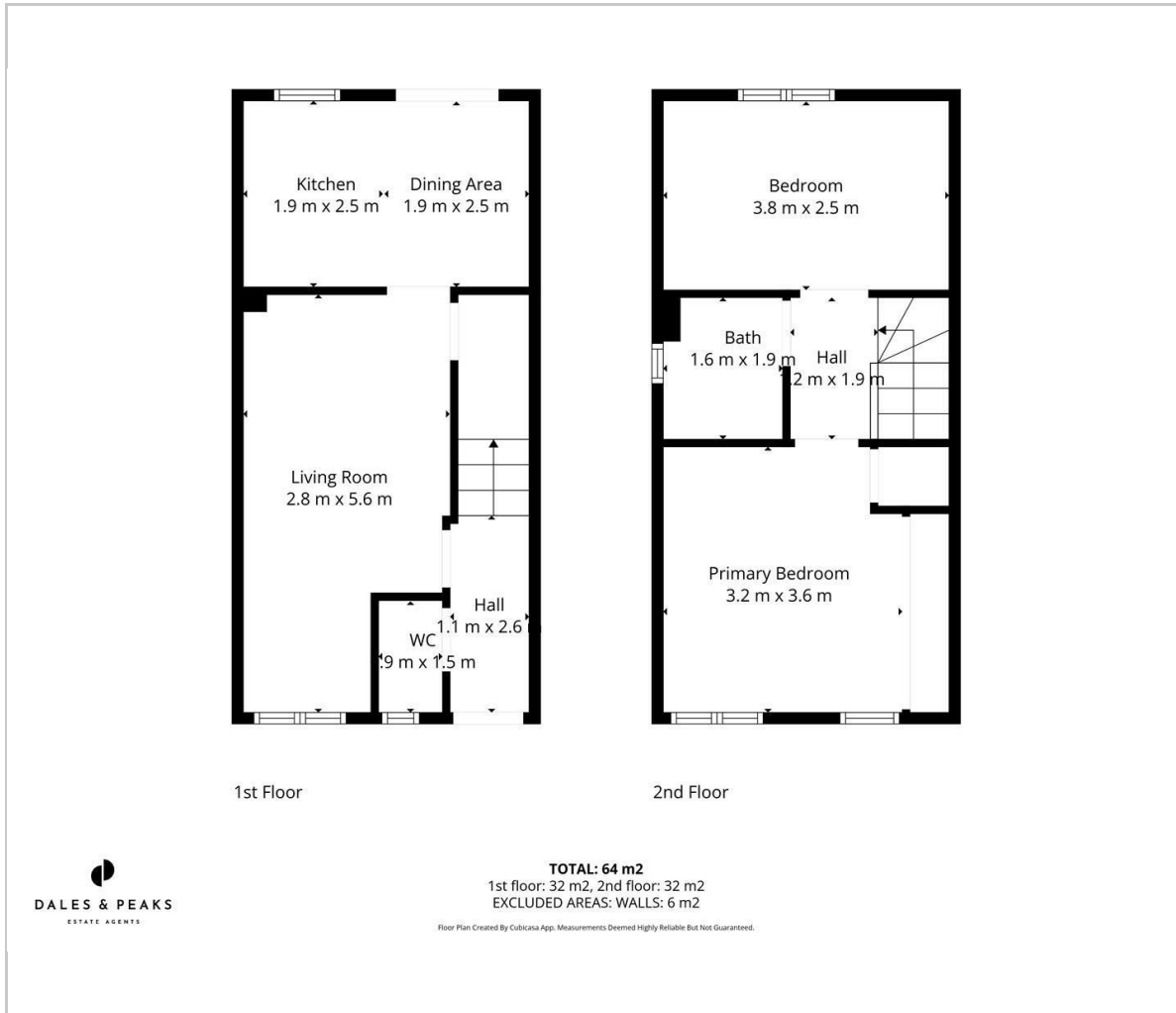
The first floor comprises; Master bedroom with built in wardrobe space and over the stairs storage cupboard, second double bedroom and bathroom.

Dales and Peaks ForwardMove
- Please read





Floor Plan

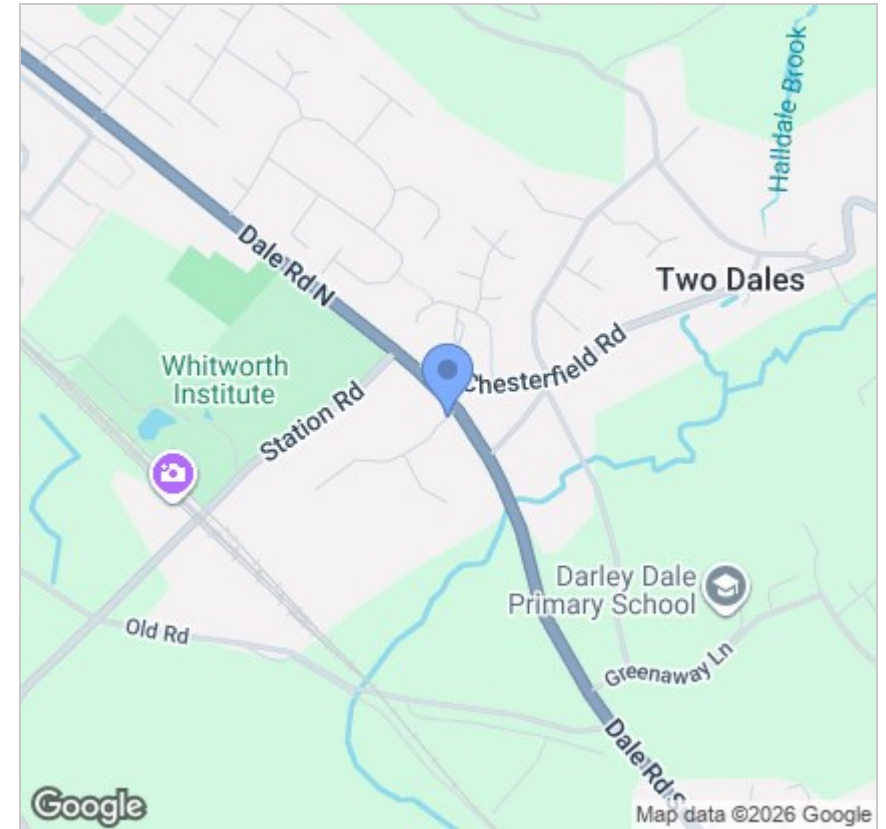


Viewing

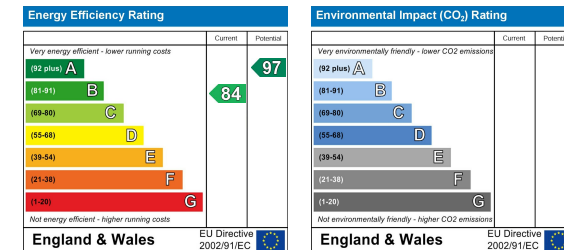
Please contact our Chesterfield Office on 01246 567540 if you wish to arrange a viewing appointment for this property or require further information.

These particulars, whilst believed to be accurate are set out as a general outline only for guidance and do not constitute any part of an offer or contract. Intending purchasers should not rely on them as statements of representation of fact, but must satisfy themselves by inspection or otherwise as to their accuracy. No person in this firm's employment has the authority to make or give any representation or warranty in respect of the property.

Area Map



Energy Efficiency Graph



131 Chatsworth Road, Chesterfield, Derbyshire, S40 2AP
 T: 01246 567540



E: info@dalesandpeaks.co.uk
 www.dalesandpeaks.co.uk