



CROMWELL ROAD, SW5

£550,000

Two double bedrooms

Off street parking

Quiet aspect

Modern

First floor

Energy rating c



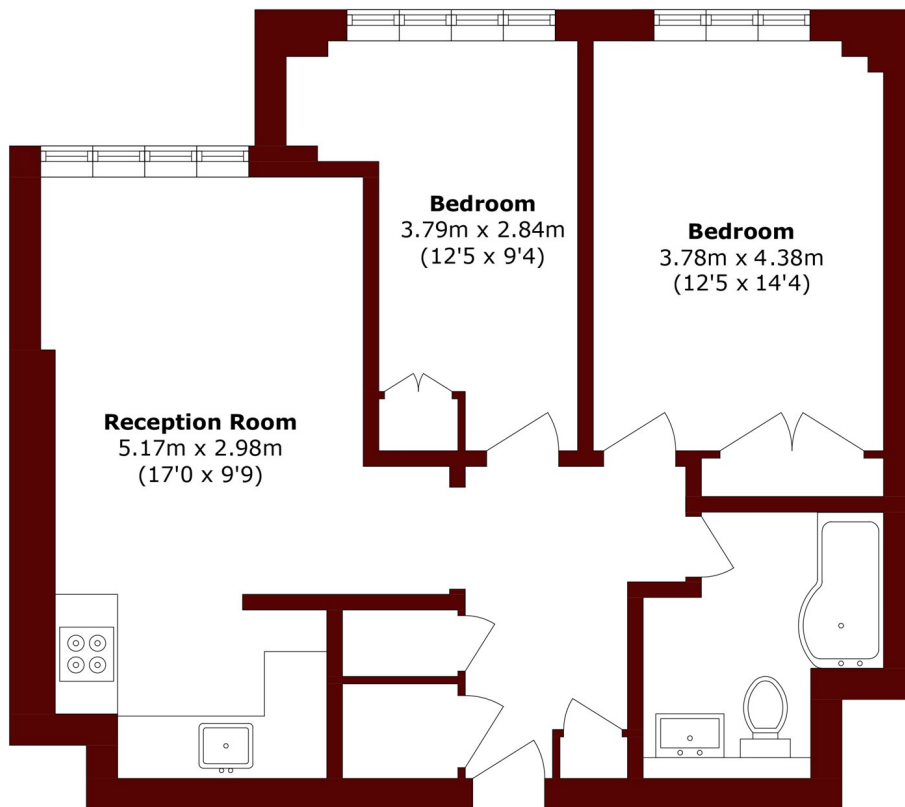
ABOUT THE PROPERTY

Located on the first floor of this modern block is this stylish two double bedroom apartment overlooking the charming Redfield Lane. The apartment is recently refurbished, benefits from an on-site porter and off road parking.

Local transport links are excellent with Earls Court, Gloucester Road, West Kensington and Kensington Olympia stations, all within a short walk. Local amenities such as shops, restaurants, bars, pubs, and the large 24-hour Tesco can be found close by.



STEP INSIDE CROMWELL ROAD



Total area (approx.): 53.1 sq. m (571.5 sq. ft)

Earls Court
020 7244 2210

Energy Rating: C We aim to make our particulars both accurate and reliable. However, they are not guaranteed; nor do they form part of an offer or contract. If you require clarification on any points then please contact us, especially if you're traveling some distance to view. Please note that appliances and heating systems have not been tested and therefore no warranties can be given as to their good working order

**MARSH &
PARSONS**