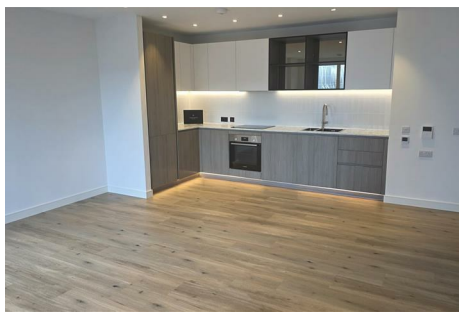




# Parkfields

Estates



## Samara Drive , Southall, UB1 1FL

Welcome to this exquisite Two-bedroom apartment, nestled within The Green Quarter a luxurious new build development known for its commitment to biodiversity. this sophisticated residence boasts high-end finishes throughout, ensuring a lifestyle of comfort and elegance.

located on the 5th Floor with own private balcony. Features include, under floor heating, Fitted Cupboards, family bathroom. OPEN PLAN KITCHEN/LOUNGE, AVAILABLE WITH OWN UNDER GROUND PARKING SPOT. WALKING DISTANCE TO SOUTHAL ELIZABETH LINE, close to local shops and schools ON SITE CAFFE SHOP AND RESTURANTS.

BONUS FACTOR THIS PROPERTY COMES WITH ACCESS TO THE GYM AND CINEMA ROOM, OFFERS WORKSPACE AREA WITH DRINKS FACILITLY

AVIALABLE NOW  
EALING COUNCIL

£2,000

## 84 Samara Drive , Southall, UB1 1FL

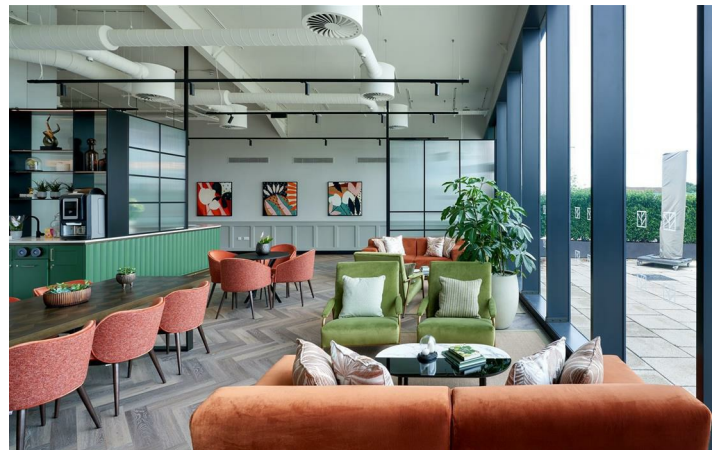
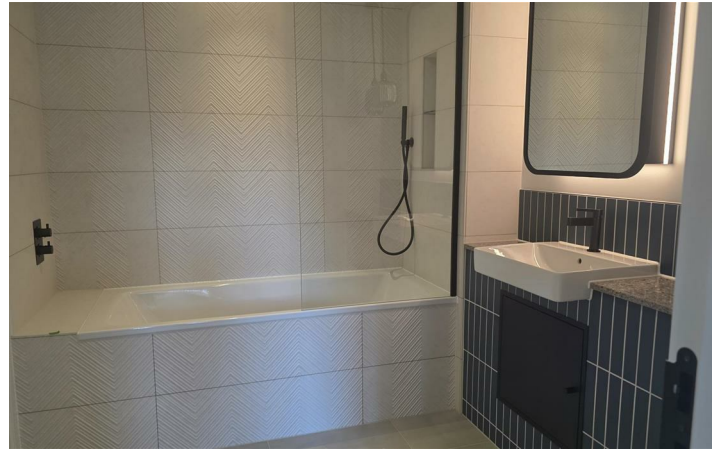


- Spacious & Bright - Open- plan living and dining area
- Exclusive Amenities - Residents-only gym, concierge and private screening room
- Concierge service
- Sophisticated Design - High - end finishes throughout
- The Green Quarter a luxurious new build development
- 24 hour security
- Scenic Outlook - Stunning views overlooking the beautifully landscaped podium gardens
- Own Private under ground Parking
- 30 Mins free cycle access



Directions







Floor Plan

These particulars, whilst believed to be accurate are set out as a general outline only for guidance and do not constitute any part of an offer or contract. Intending purchasers should not rely on them as statements of representation of fact, but must satisfy themselves by inspection or otherwise as to their accuracy. No person in this firms employment has the authority to make or give any representation or warranty in respect of the property.

