



DM&Co.
— SALES & LETTINGS —

2 Millennium Forge Coyne
Close
DY4 8EL

Brand New, Ground Floor One-Bedroom
Apartment With High-Quality Finishes
Throughout, Gated Parking, Offered Unfurnished
& Available Now



DETAILS

This thoughtfully designed one-bedroom apartment offers comfortable, modern living within a secure and welcoming development, perfectly suited for those aged 55 and over, including individuals seeking wheelchair-friendly accommodation or enhanced accessibility.

The property features a well-appointed kitchen complete with an electric hob and oven, washer/dryer, and fridge freezer, seamlessly flowing into a semi open-plan living area —creating a practical yet & relaxing space.

The generous double bedroom provides ample room for additional furnishings, ensuring flexibility and comfort, while the separate shower room is fitted with a walk-in shower, W.C, and wash hand basin, designed with ease of use in mind.

Residents enjoy secure gated parking with 18 available spaces, plus further parking for 6 cars at the front of the development.

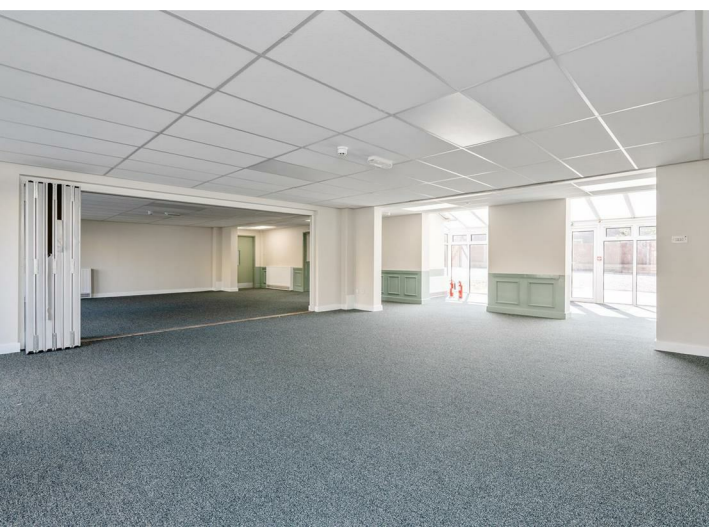
The building itself has been finished to an exceptional standard, with lift access to all floors and beautifully maintained communal areas designed to encourage a sense of community and comfort. Security cameras are installed throughout the development and can be accessed by occupiers, offering added peace of mind.

No expense has been spared in the design and finish of this development, making it an ideal choice for those seeking a safe, stylish, and supportive living environment.

(Four Ground Floor Apartments Available)

Sandwell Council - Tax Band A





LOCATION

Ideally positioned for excellent connectivity, the development is perfectly suited for those seeking convenience and ease of travel. The nearby Wednesbury to Brierley Hill Metro extension—part of the West Midlands Metro—offers a modern tram service, with the first phase opening in 2026 and providing stops close to Dudley town centre and Dudley Port railway station. The tram line is just an eight-minute walk away, while regular bus routes are located directly on the doorstep, and Tipton Train Station can be reached within approximately a 12-minute walk.

The surrounding area offers a practical yet peaceful residential setting, combining strong transport connections with access to nearby towns and amenities—ideal for those looking for both accessibility and comfort in their everyday living.

MATERIAL INFORMATION

Percentage of Mobile Coverage In Your Area -

EE - 92%

Vodafone - 86%

3 - 84%

O2 - 83%

Broadband Availability -

Openreach & Virgin Media

Broadband Type

Standard 7 Mbps (Highest available download speed)

0.8 Mbps (Highest available upload speed)

Superfast 80 Mbps (Highest available download speed)

20 Mbps Good (Highest available upload speed)

Ultrafast 1000 Mbps (Highest available download speed)

100 Mbps (Highest available upload speed)

Low Flood Risk

Agents Note: Whilst every care has been taken to prepare these sales particulars, they are for guidance purposes only. All measurements are approximate and are for general guidance purposes only and whilst every care has been taken to ensure their accuracy, they should not be relied upon and potential buyers are advised to recheck the measurements.

FEATURES

- One-Bedroom Ground Floor Apartment
- Wheelchair-Friendly And Accessible Design Throughout
- Modern Kitchen With Electric Hob, Oven, Washer/Dryer, And Fridge Freezer
- Generous Double Bedroom With Space For Additional Furnishings
- Separate Shower Room With Walk-In Shower, W.C., And Basin
- Gated Parking, Lift Access, High-Quality Communal Areas, And Security Cameras
- Holding Deposit - £206.00
- Security Deposit - £1032.69
- Offered Unfurnished
- Available Now

VIEWING

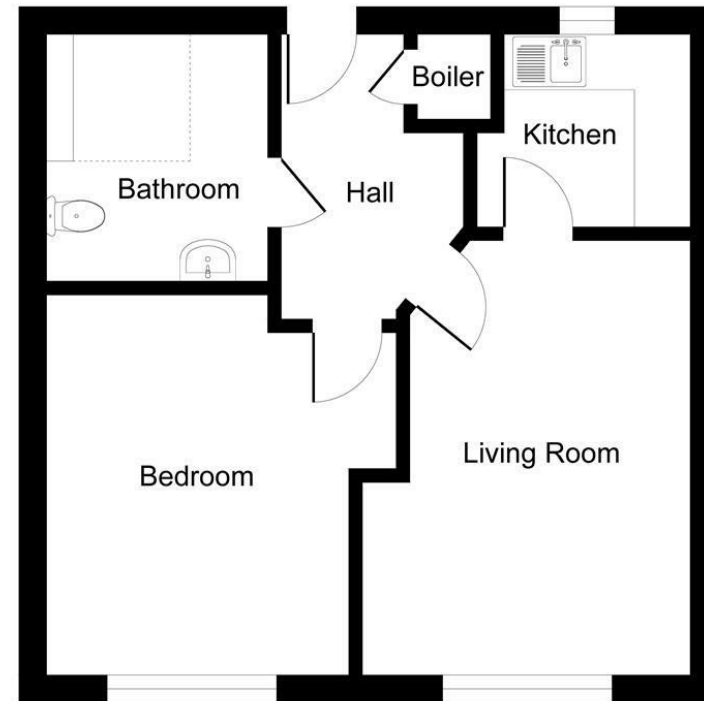
Book a viewing with Sole Agents DM & Co.

Premium by phone or email:

📞 0121 775 0101

@ lettings@dmandcohomes.co.uk

Agents Note: Whilst every care has been taken to prepare these sales particulars, they are for guidance purposes only. All measurements are approximate and are for general guidance purposes only and whilst every care has been taken to ensure their accuracy, they should not be relied upon and potential buyers are advised to recheck the measurements.



Apartment 2

Whilst every attempt has been made to ensure the accuracy of the floor plan contained here, measurements of doors, windows, rooms and any other items are approximate and no responsibility is taken for any error, omission, or mis-statement. The measurements should not be relied upon for valuation, transaction and/or funding purposes. This plan is for illustrative purposes only and should be used as such by any prospective purchaser or tenant. The services, systems and appliances shown have not been tested and no guarantee as to their operability or efficiency can be given.
Copyright © 2025 | www.houseviz.com

