



## Ironworks Way, E13

£1,780 Per calendar month

A well-presented one bedroom flat in Upton Park. This beautiful apartment has a modern kitchen with integrated appliances, floor-to-ceiling windows and a private balcony.

Residents of the development enjoy on-site amenities which include a concierge service and gymnasium. Ironworks Way is close to Upton Park Circle Line and East Ham Overground Line stations.

### Features

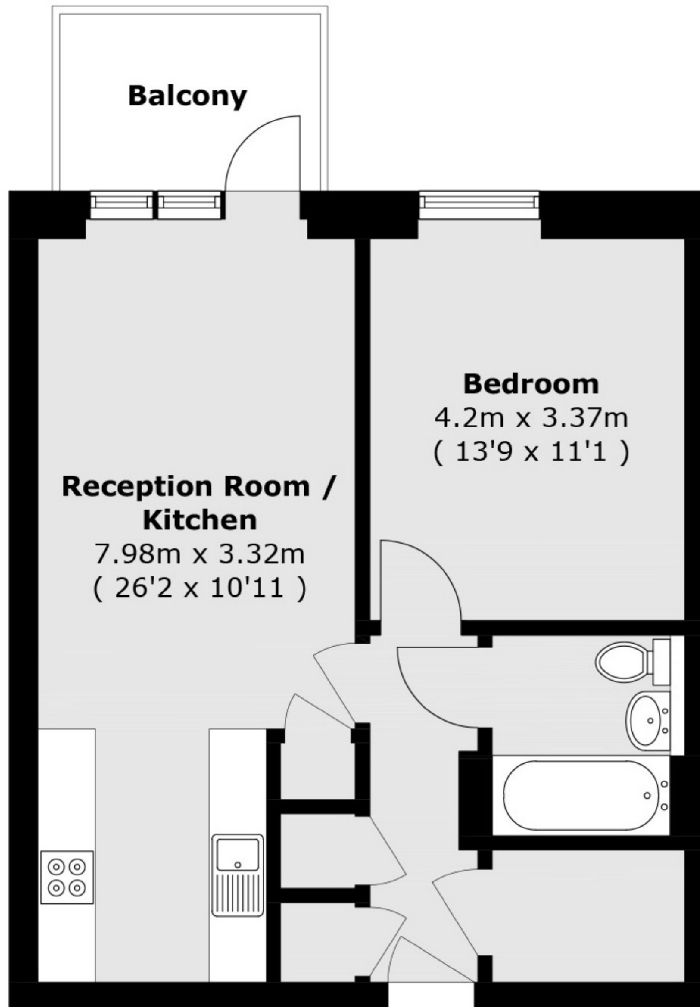
- New Build Development
- One Double Bedroom
- Floor-to-Ceiling Windows
- Ample Storage
- Private Balcony
- Concierge & Gymnasium



**Ironworks Way, E13**



# Ironworks Way, London, E13



Total area (approx.): 53.9 sq. m (580.1 sq. ft)

Balcony area (approx.): 5 sq. m (53.8 sq. ft)