



*A FANTASTIC, TWO BEDROOM, THIRD FLOOR
APARTMENT WITH A LIFT A PRIVATE PARKING SPACE*



0141 404 5474



www.mcewanfraserlegal.co.uk



info@mcewanfraserlegal.co.uk





McEwan Fraser is delighted to present this fantastic two-bedroom, third-floor apartment with lift access and the added bonus of a parking space, in the City Centre's most vibrant and significant new development of the past decade.

The property is the perfect example of a chic, modern, design-led property which has come to become synonymous with Glasgow city centre. Bright and spacious, with tremendous flexibility to adapt the property to individual requirements.

The internal accommodation is focused towards a stunning open-plan kitchen reception room. Dual aspect with huge natural light and neutral décor, the ample floor space on offer can easily accommodate a larger suite and a dining table. French doors open onto a Juliet balcony. The kitchen comprises a generous range of modern base and wall-mounted units, which provide ample prep and storage space. Further complemented with a host of integrated appliances.







There are two very generous double bedrooms, with the master being complemented with an impressive en-suite shower room. The two bedrooms are bright and airy with a range of furniture configurations and built-in wardrobes. The modern master bathroom completes the accommodation.



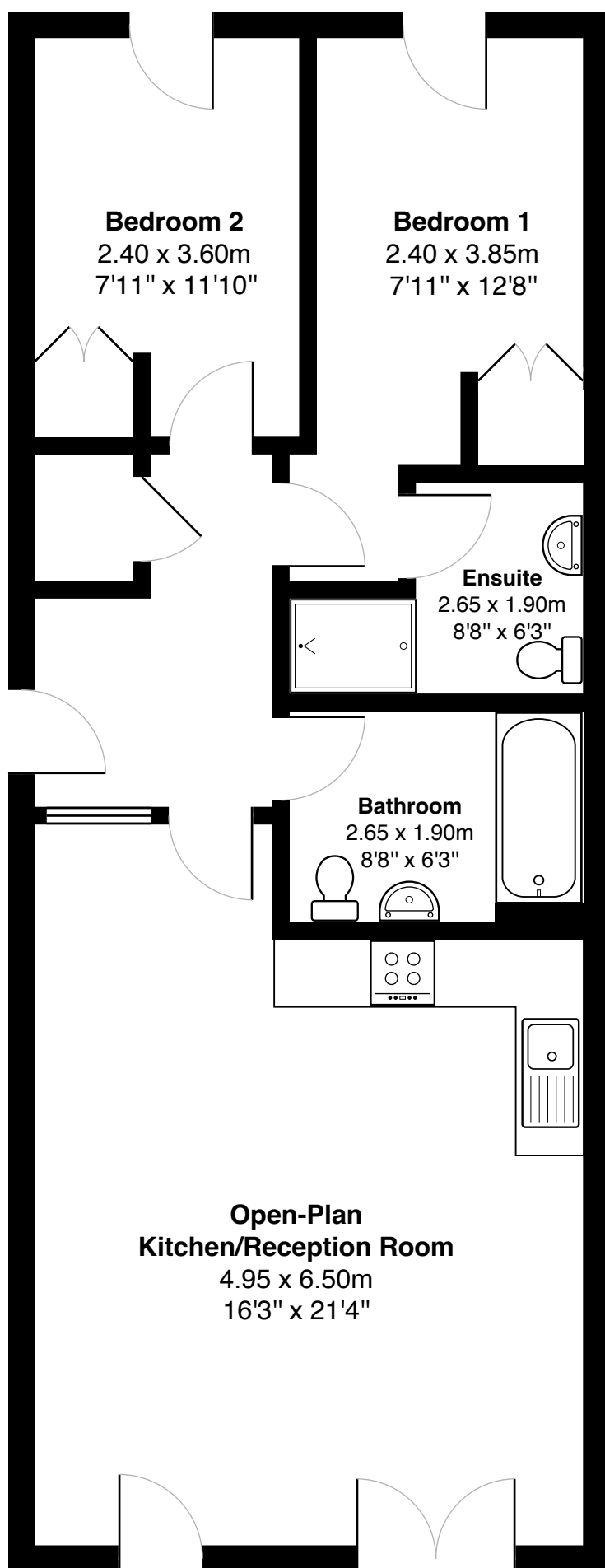




Bedroom 2







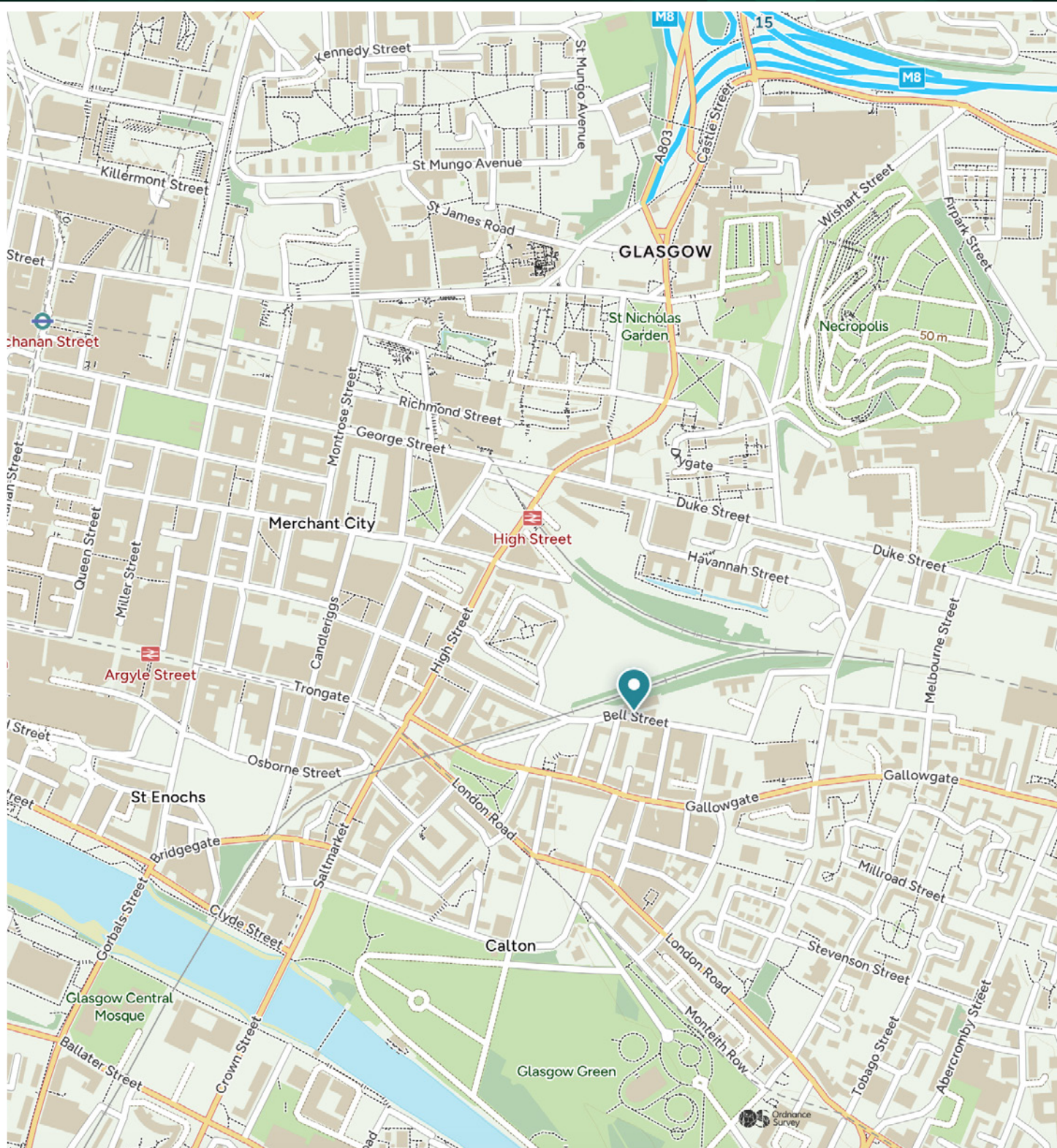
Gross internal floor area (m²): 66m²

EPC Rating: C



The property is located in the vibrant Merchant City district of Glasgow City centre and is perfectly placed to take advantage of all the wonderful amenities that the city has to offer with the best shopping, bars, cafes and restaurants around, and they are all within a five minute walk. This is also a great location for those working or studying in the city. You are ten minutes from the motorway network and with great rail and bus links around the city, this really is an ideal place to call home.





McEwan Fraser Legal

Solicitors & Estate Agents

Tel. 0141 404 5474

www.mcewanfraserlegal.co.uk

info@mcewanfraserlegal.co.uk

Part
Exchange
Available



THE SUNDAY TIMES
THE SCOTSMAN



Text and description
DIANE KERR
New Homes Director



Professional photography
CRAIG DEMPSTER
Photographer



Layout graphics and design
ALAN SUTHERLAND
Designer

Disclaimer: The copyright for all photographs, floorplans, graphics, written copy and images belongs to McEwan Fraser Legal and use by others or transfer to third parties is forbidden without our express consent in writing. Prospective purchasers are advised to have their interest noted through their solicitor as soon as possible in order that they may be informed in the event of an early closing date being set for the receipt of offers. These particulars do not form part of any offer and all statements and photographs contained herein are for illustrative purposes and are not guaranteed or warranted. Buyers must satisfy themselves for the accuracy and authenticity of the brochure and should always visit the property to satisfy themselves of the property's suitability and obtain in writing their solicitor what's included with the property including any land. The dimensions provided may include, or exclude, recesses intrusions and fitted furniture. Any measurements provided are for guide purposes only and have been taken by electronic device at the widest point. Any reference to alterations to, or use of, any part of the property does not mean that any necessary planning, building regulations or other consent has been obtained. A buyer must find out by inspection or in other ways that all information is correct. None of the appliances/services stated or shown in this brochure have been tested by ourselves and none are warranted by our seller or MFL.