



Great James Street

Bloomsbury, WC1N

£3,683.33 per month
(£850.00 per week)

A bright & beautifully presented duplex apartment located on this charming period street in the heart of Bloomsbury. Finished to a good standard throughout the apartment benefits from ample storage and a private patio.

CHESTERTONS



Great James Street

Bloomsbury, WC1N

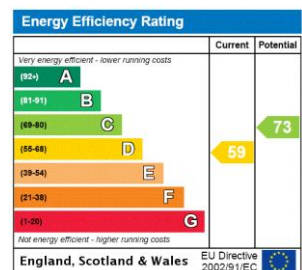
- Spacious Split Level Apartment
- Large Terrace
- Wooden Flooring
- Nearest tubes: Chancery Lane, Russell Square & Holborn



A bright & beautifully presented duplex apartment located on this charming period street in the heart of Bloomsbury. Finished to a good standard throughout, the apartment benefits from ample storage and a private patio.

Comprising of two double bedrooms, 2 bathrooms (one en-suite) a contemporary separate kitchen and a spacious reception room which is flooded with natural light, overlooking the private patio. Situated within walking distance to Russell Square, Holborn and Chancery Lane tube stations.

Minimum Term: 12 months
Deposit Required: £4,250.00
Local Authority: Camden
Council Tax Band: E
EPC Rating: D
Furnished



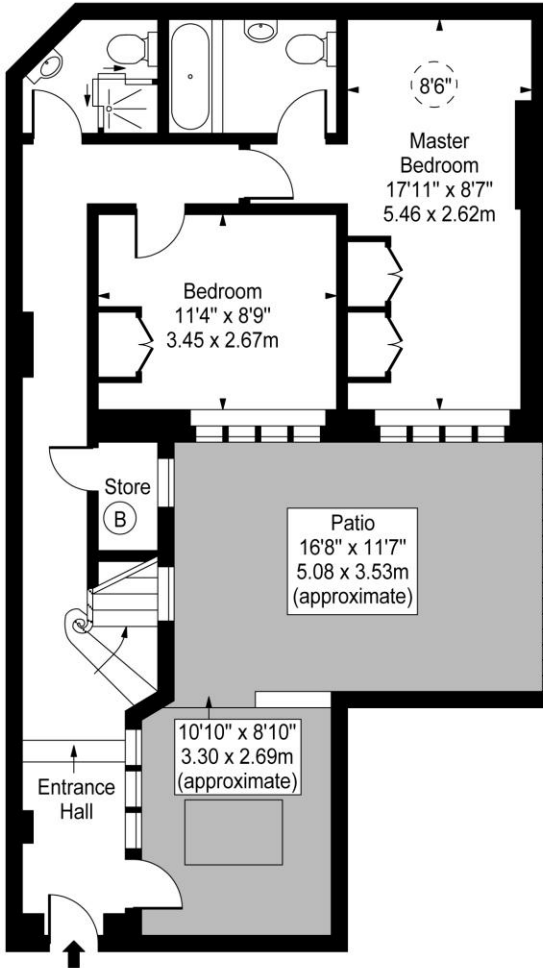
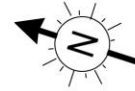
Chestertons Covent Garden Lettings

196 Shaftesbury Avenue
 Covent Garden
 London
 WC2H 8JF
 coventgardenlettingsusers@chestertons.co.uk
 02030408400
 chestertons.co.uk

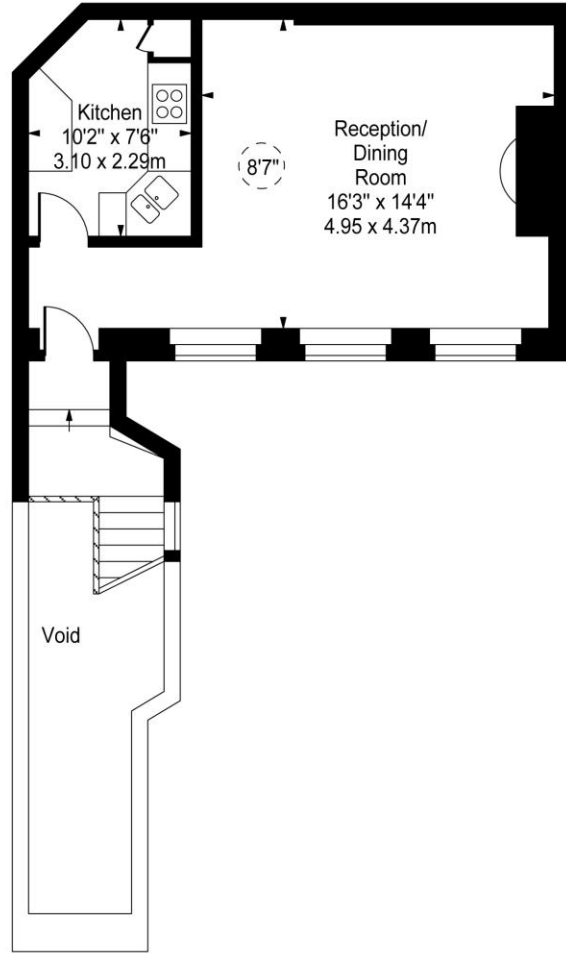
Additional tenant charges apply (fees apply to non-AST tenancies only)
 Tenancy Agreement Fee: £300
 References per Tenant/Guarantor: £60
 Inventory check (approx. £100 – £250 inc. VAT)
 chestertons.co.uk/property-to-rent/applicable-fees

Great James Street

○ - Ceiling Height



Ground Floor



First Floor

Approx Gross Internal Area 928 Sq Ft - 86.21 Sq M

(Excluding Void)

For Illustration Purposes Only - Not To Scale
www.goldlens.co.uk
 Ref. No. 009301M

