



## Stephenson Wharf, Hemel Hempstead, HP3 9WZ

### Offers In Excess Of £325,000

SOLD WITH NO ONWARD CHAIN. Situated in the highly sought after Apsley Lock development is this well presented first floor luxury waterside apartment. Boasting two double bedrooms, en suite to master bedroom, 25'7 lounge/dining room with Juliette balcony with views over the Grand Union Canal, gas central heating, double glazing and residents parking.

Located within easy reach of Apsley Lock with its local shops restaurants, public house, coffee shops and within a five minute walk of Apsley mainline station with access to London Euston within 28 minutes and the M1, M25 and A41 road links.

Located in the highly sought-after Apsley Lock development, this modern first-floor apartment offers a delightful blend of comfort and convenience. With two well-proportioned bedrooms, including a master suite complete with an en suite shower room, this property is perfect for both professionals and small families.

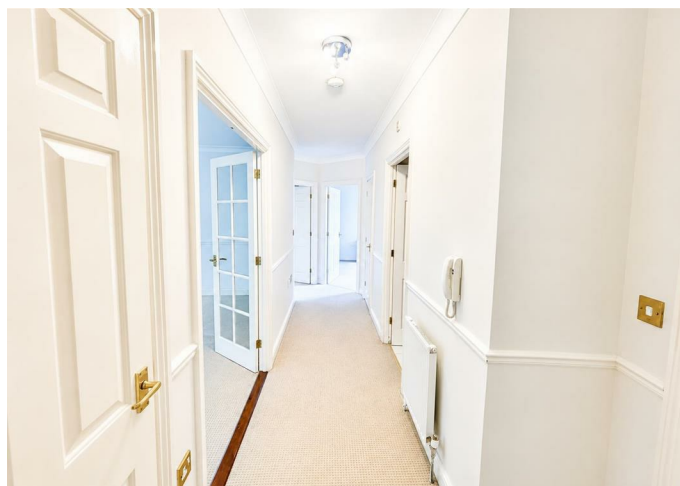
The heart of the home is the impressive 25'7 lounge/dining room, which features a charming Juliette balcony that provides stunning views over the picturesque Grand Union Canal. This space is ideal for entertaining guests or simply enjoying a quiet evening at home. The apartment is equipped with gas central heating and double glazing, ensuring warmth and energy efficiency throughout the year.

Residents will appreciate the convenience of residents parking, making it easy to come and go as you please. Additionally, this property is being sold with the benefit of no upper chain, allowing for a smooth and straightforward purchasing process.

With its prime location and modern amenities, this apartment in Apsley is a fantastic opportunity for those looking to enjoy a vibrant community while being close to nature. Don't miss your chance to make this lovely property your new home.

## **COMMUNAL ENTRANCE**

### **ENTRANCE HALLWAY**



## **LOUNGE / DINING ROOM 25'7 x 13'1 (7.80m x 3.99m)**



## **KITCHEN 9'10 x 8'6 (3.00m x 2.59m)**



## **MASTER BEDROOM 14'9 x 12'6 (4.50m x 3.81m)**



## EN SUITE SHOWER ROOM



## BEDROOM TWO 12'10 x 11'10 (3.91m x 3.61m)

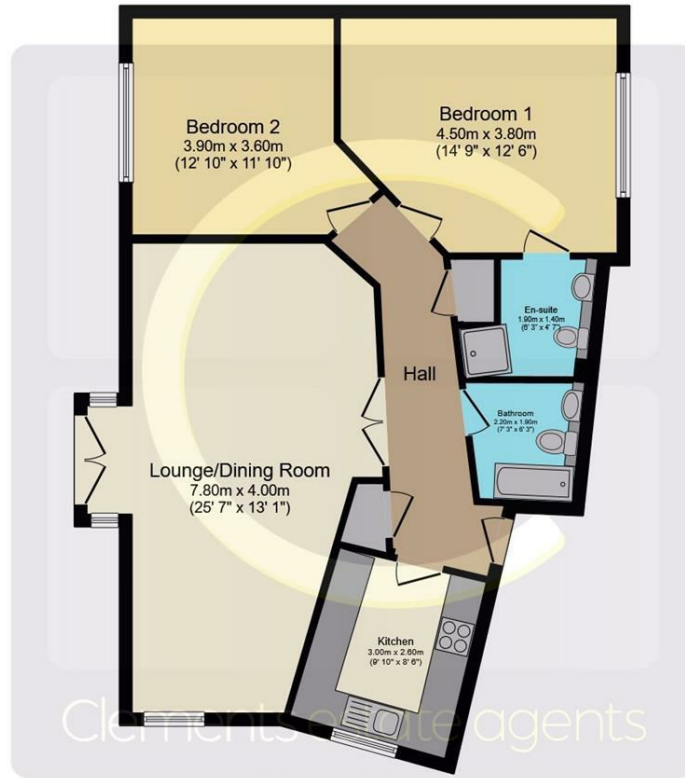


## BATHROOM



## RESIDENTS PARKING

# Floor Plan

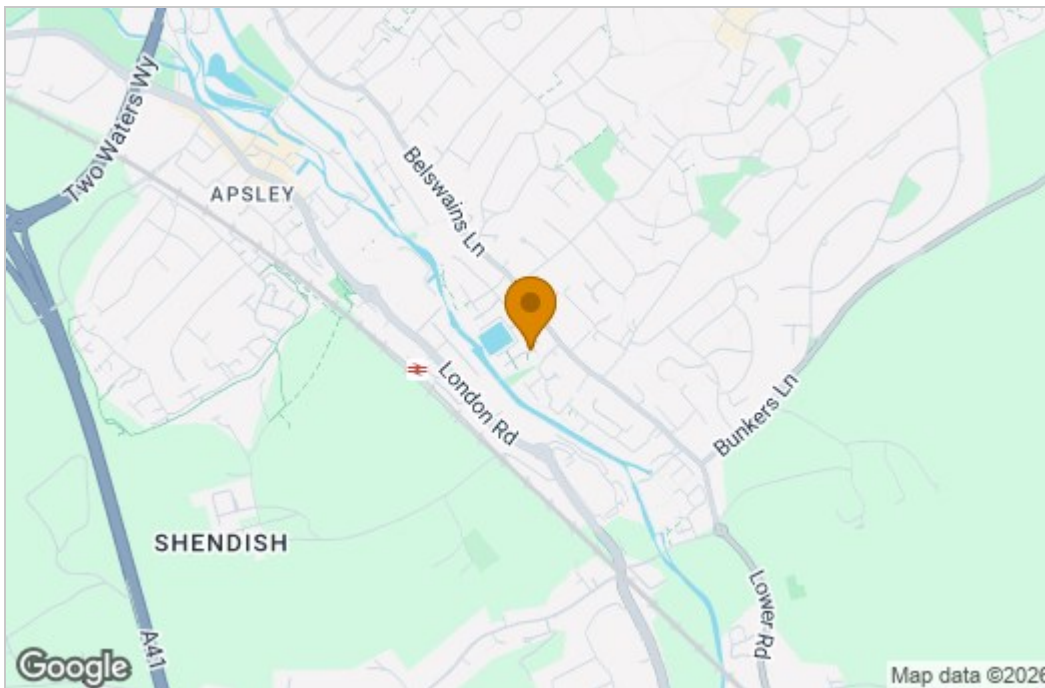


**Floor Plan**

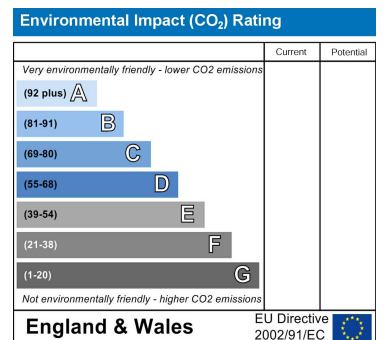
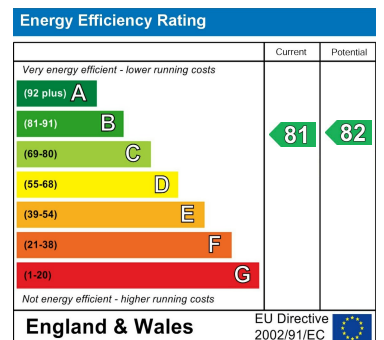
Total floor area 85.2 sq.m. (917 sq.ft.) approx

This plan is for illustration purposes only and may not be representative of the property. Plan not to scale. Powered by PropertyBox

# Area Map



# Energy Efficiency Graph



These particulars, whilst believed to be accurate are set out as a general outline only for guidance and do not constitute any part of an offer or contract. Intending purchasers should not rely on them as statements of representation of fact, but must satisfy themselves by inspection or otherwise as to their accuracy. No person in this firm's employment has the authority to make or give any representation or warranty in respect of the property.

45 Marlowes, Hemel Hempstead, Hertfordshire, HP1 1LD

Tel: 01442 214151 Email: sales@clementsestateagents.co.uk <https://www.clementsestateagents.co.uk>