

Fulham Road, SW6

£675,000

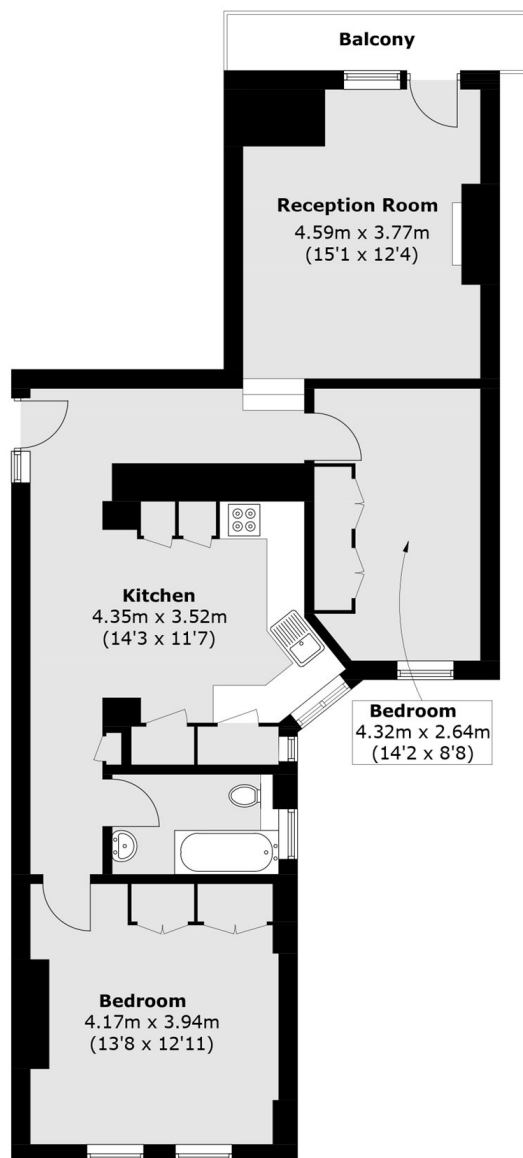
Located on the top floor of this attractive red-brick mansion block is a bright and spacious two-bedroom apartment. Entered via a welcoming hallway, the flat is well laid out and comprises a separate fully integrated kitchen and a spacious living room with high ceilings, an original fireplace, ornate cornicing, and direct access to a small private balcony.

King Edward Mansions is enviably located between Parsons Green and Fulham Broadway, benefitting from an excellent range of amenities and transport links. The property is also ideally positioned to enjoy a variety of shops, restaurants, bars and boutiques, right on its doorstep.

Features

- Red Brick Mansion Block
- Private Balcony
- Communal Courtyard
- Sold Chain Free
- Two Double Bedrooms
- Lateral Top Floor Apartment

Fulham Road, London, SW6



Fourth Floor

Total area (approx.): 79.8 sq. m (858.9 sq. ft)
Balcony area : 4.2 sq. m (45.2 sq. ft)