



OVER 60?

Secure this property
for up to **59% less!**

Price

£225,000

Leasehold

2x  1x  1x 

**Palmer Court,
Richmond Street,
Herne Bay, Kent, CT6**

Wards
Helping you move forwards



Main features

- Exclusive gated development
- Second floor apartment with lift
- Close to beach and town centre
- Allocated parking, laundry room and spacious rooms throughout
- Open plan lounge and kitchen area, packed with appliances

Accommodation

SECOND FLOOR

Landing

Bathroom

Bedroom 1: 13'5 x 11'9 (4.09m x 3.58m)

Bedroom 2: 11'9 x 11'7 (3.58m x 3.53m)

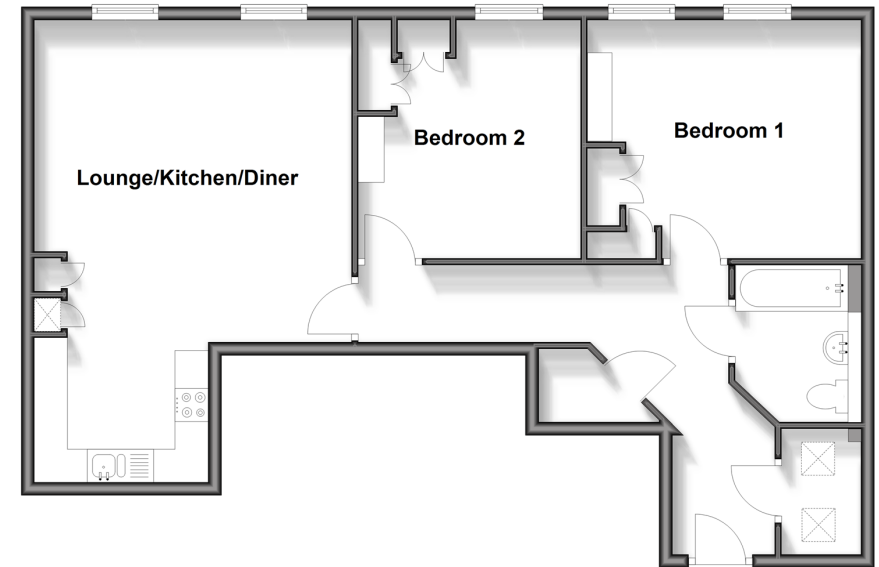
Lounge/Kitchen/Diner: 23'2 x 15'6 (7.07m x 4.73m)

OUTSIDE

Allocated Parking

Second Floor

Approx. 78.0 sq. metres (839.7 sq. feet)



Call Herne Bay - 01227 361226 ■ wardsof Kent.co.uk

- Legal advice should be taken to verify fixtures/fittings, planning, alterations and/or lease details
- Appliances & services are untested, dimensions are approximate and floor plans are not to scale
- Through a Homewise Home For Life Plan people aged 60+ can secure this property for up to 50% less, by purchasing a Lifetime Lease.



11238774/20250813/FW/GG