



Alie Street, London E1

Price £995 per week - Furnished







Description

A stunning 2 bedroom apartment in the popular Goodmans Fields development, E1.

Offered fully furnished, this spacious apartment offers an abundance of living space, and boasts a high specification with comfort cooling and wood flooring, two double bedrooms with large fitted wardrobes, two luxury bathrooms, contemporary kitchen with Siemens appliances, and excellent storage space.

The development offers residents on site leisure facilities to include gymnasium, swimming pool and 5 star healthcare centre, private cinema room, business / conference facilities and 24 hour concierge. Goodmans Fields is situated 0.3 miles from Aldgate underground station, in the heart of zone 1.

We understand that cooling / heating is delivered via a communal system for which separate charges apply.

Council tax band: F. Rent is payable on a monthly basis, and you may be required to pay more than a month's rent in advance for tenancies with annual rents exceeding £100,000. You will be required to pay a 1 week holding deposit following a successful offer. Tenancies with annual rents up to £50,000 will require a 5 weeks' security deposit, while those exceeding this threshold will require a 6 weeks' deposit. Utility bills, council tax, telephone line and broadband are not included in the rent. As well as paying the rent, you may also be required to make some additional permitted payments. If your tenancy does not qualify as an APT, additional fees may apply. Please visit jll.co.uk/fees for details of fees that may be payable when renting a property. To check broadband and mobile phone coverage please visit Ofcom here ofcom.org.uk/phones-telecoms-and-internet/advice-for-consumers/advice/ofcom-checker

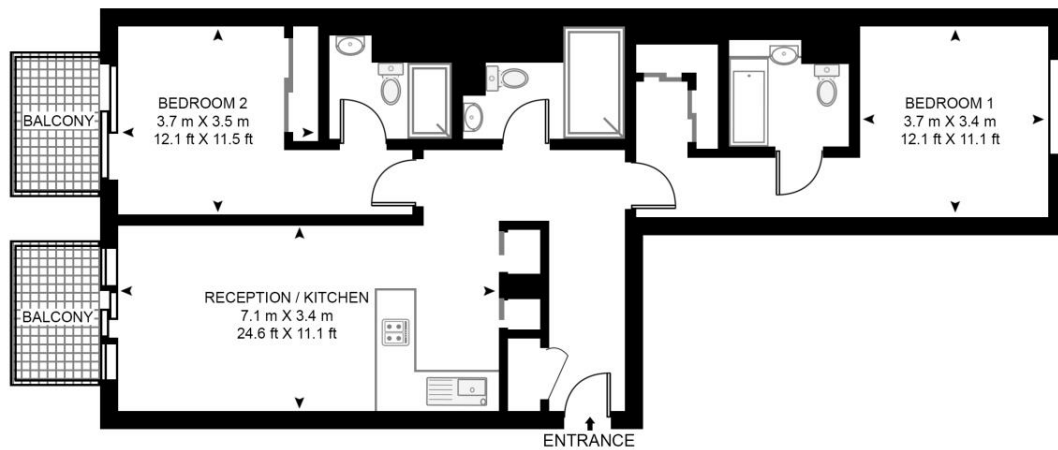
- 2 Bedrooms
- 2 Bathrooms
- 3rd Floor
- High specification
- 24 hour concierge
- On-site leisure facilities
- Approx. 992 sq ft (92.2 sq m)
- 0.3 miles from Aldgate Station
- Furnished
- EPC: B

Floorplan

992 sq ft | 92 sq m

MERANTI HOUSE

APPROXIMATE GROSS INTERNAL FLOOR AREA 992 SQ.FT (92.2 SQ.M)



THIRD FLOOR

HDVA

This floor plan has been defined by the RICS Code of Measurement. This floor plan and all others are for approximate representative purposes only and upon usage is agreed to as such by the client.

WWW: hdvirtualart.com | TEL: 0203.974.1567 | EMAIL: info@hdvirtualart.com

City
25 Walbrook The Walbrook
Building,
London EC4N 8AF
+4420 7337 4000

Urban living, your way.

jll.co.uk/residential

© 2019 Jones Lang LaSalle IP, Inc. All rights reserved. All information contained herein is from sources deemed reliable; however, no representation or warranty is made to the accuracy thereof.

