



## PLYMPTON ROAD, NW6

£2,250 per month

One Bedroom  
Modern  
Spacious  
Period Features  
Great Location  
Wooden Floors

@marshandparsons  
marshandparsons.co.uk

MARSH &  
PARSONS



# ABOUT THE PROPERTY

A modern one-bedroom apartment on the first floor of a charming period building. The property has high ceilings, large bay windows, a separate kitchen with dishwasher, a modern bathroom, and hardwood flooring.

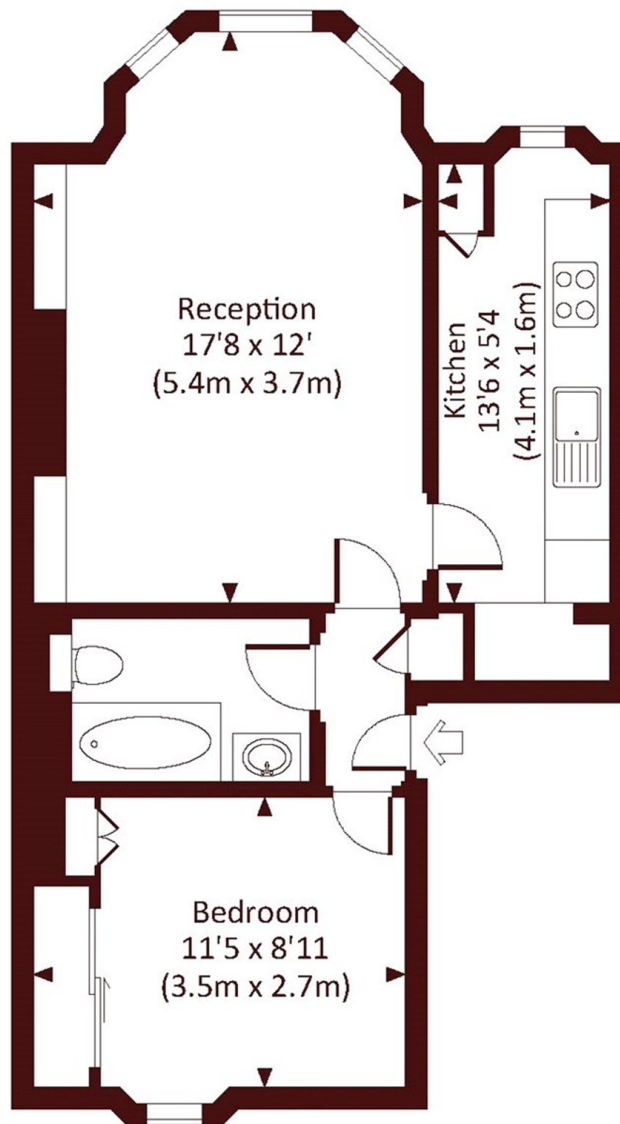
Plympton Road is a short walk from the cafes, restaurants and amenities of Kilburn High Road & Salusbury Road. Local transport links include Brondesbury Kilburn and West Hampstead.



# STEP INSIDE PLYMPTON ROAD

PLYMPTON ROAD, NW6

Approx. gross internal area  
460 Sq.Ft. / 42.7 Sq.M.



FIRST FLOOR



All measurements have been made in accordance with RICS Code of Measuring Practice which are approximate only and only for illustrative purposes. For the avoidance of doubt, Dowling Jones Design shall not be liable for any reliance on these measurements. © 2016 www.dowlingjones.com 020 7610 9933

Queen's Park  
020 7871 5050

Energy Rating: We aim to make our particulars both accurate and reliable. However, they are not guaranteed; nor do they form part of an offer or contract. If you require clarification on any points then please contact us, especially if you're traveling some distance to view. Please note that appliances and heating systems have not been tested and therefore no warranties can be given as to their good working order

MARSH &  
PARSONS