

Octahedron, George Street

Jewellery Quarter, B3 1PP

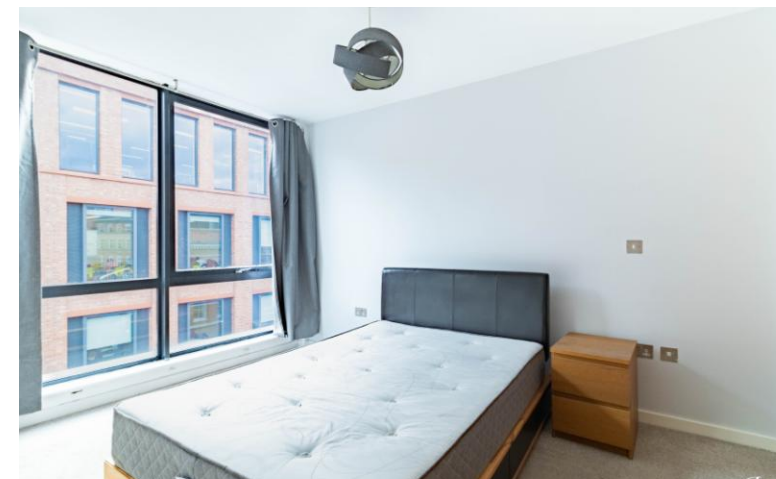
Asking Price Of **£159,950**

Two-Bedroom Apartment

Jewellery Quarter Location

Top Floor

Lift Access



A well-presented Top Floor two-bedroom, one bathroom apartment with secure allocated parking in the ever-popular Octahedron development, in the heart of Birmingham's historic Jewellery Quarter. The internal accommodation briefly comprises an Entrance Hall, open-plan Kitchen/ Dining Room, two double Bedrooms, and a family bathroom. Situated just a short walk from St Pauls Square, Jewellery Quarter amenities and the financial district.

The property is sold with an allocated parking space within the development's secure car park, and is sold with no upward chain.