



10 Westwood Drive Gardens, Inkersall, Chesterfield, Derbyshire, S43 3DD



10 Westwood Drive Gardens

Inkersall

£425,000

An exciting opportunity has arisen to purchase an attractively designed FOUR BEDROOMED executive style stone built detached house which is perfect for modern day family living.

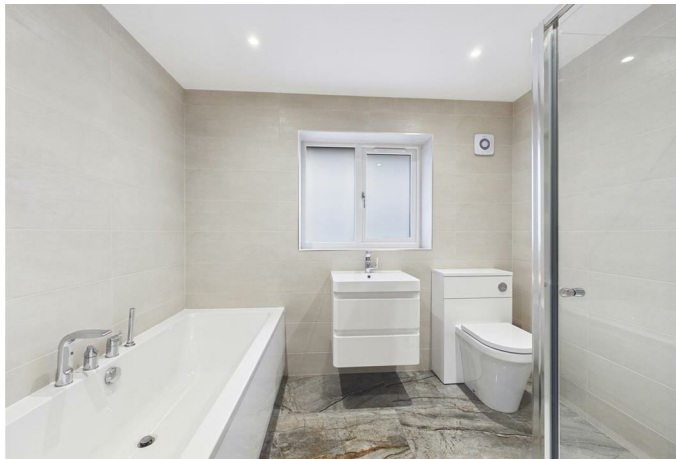
Completed in 2022 by renowned local builder 'Shaw Developments' in the traditional manner to a very high specification and offering UPVC double glazing, gas fired central heating and briefly comprising:- entrance hall, superb open plan dining kitchen having an extensive range of contemporary grey gloss kitchen units and integrated appliances, exceptionally proportioned living room with twin French doors opening onto the garden, ground floor 4th bedroom and luxurious bath/shower room . First floor study landing with stunning glass banister, master suite comprising a double bedroom with stunning en-suite shower room, generous second double bedroom and third single bedroom. Bathroom with shower.

Driveway with ample off road block paved parking and detached single garage. Garden

Being enviably located on the semi rural fringe of Inkersall with outstanding far reaching countryside views yet within easy reach of an excellent range of local amenities.

- Superb four bedroomed detached executive home
- Contemporary grey gloss kitchen with built in appliances
- Three stunning bath/shower rooms
- Exceptionally spacious living room
- Fantastic far reaching views
- No upward chain
- Viewing is a must to appreciate the size and locality
- Quiet residential area
- Viewing via Dronfield office 01246 290992
- EPC - B - Council Tax Band: D Freehold





CASTLE VIEW, INKERSALL

APPROXIMATE GROSS INTERNAL AREA = 184.7 SQ M / 1988 SQ FT

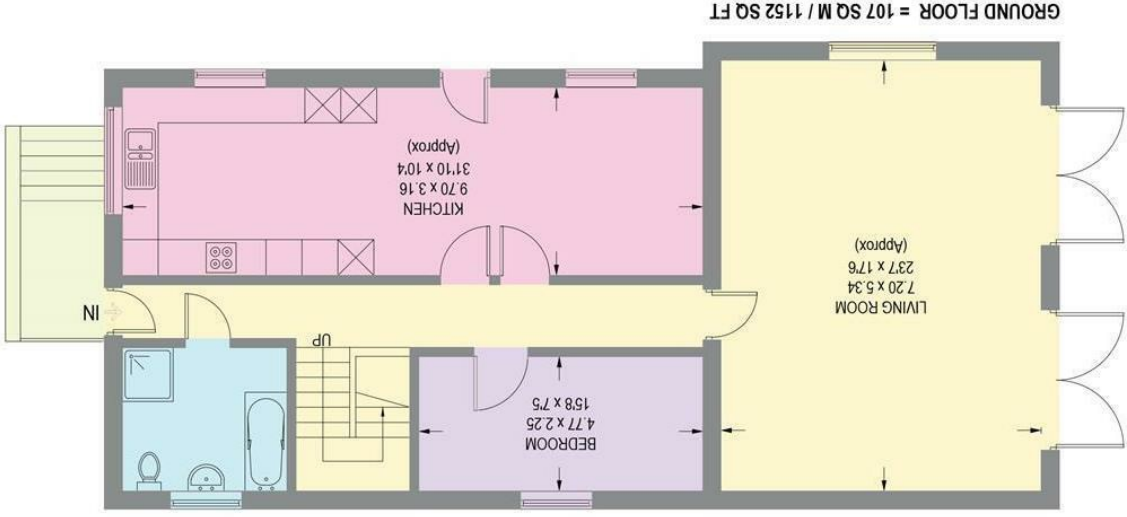
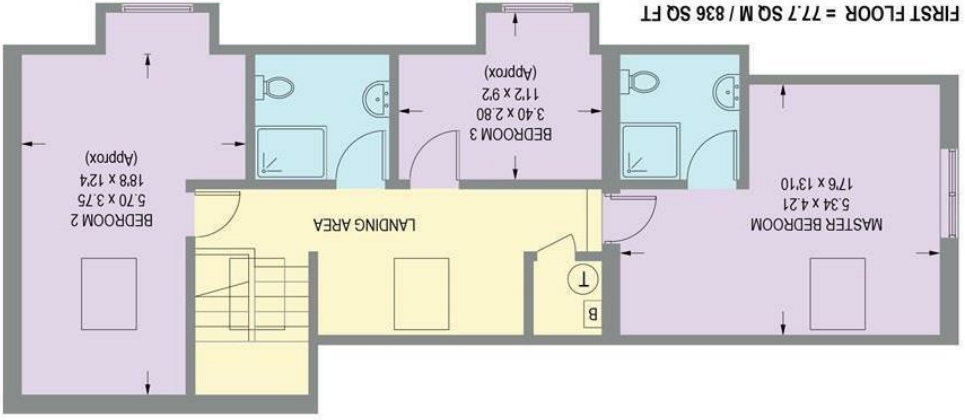


Illustration for identification purposes only, measurements are approximate, not to scale.

While we endeavour to make our sales particulars fair, accurate and reliable, they are only a general guide to the property and, accordingly, if there is any point, which is of particular importance to you, please contact the relevant office. The Agents have not tested any apparatus, equipment, fittings or services and so cannot verify they are in working order. The buyer is advised to obtain verification. Please note all the measurement details are approximate and should not be relied upon as exact. All plans, floor plans and maps are for guidance purposes only and are not to scale. Under no circumstances should they be relied upon as exact or for use in planning carpets and other such fixtures, fittings or furnishings. YOUR HOME IS AT RISK IF YOU DO NOT KEEP UP REPAYMENTS ON A MORTGAGE OR OTHER LOAN SECURED ON IT. A Life Assurance policy may be requested. Written Quotations of credit terms available on request.