



## Fulwood Walk, SW19

£1,850 Per calendar month

This recently redecorated house offers a separate kitchen and living area, leading to a private garden. The first floor has a larger than average bathroom and one double bedroom with built in storage. Perfect for a working professional or couple.

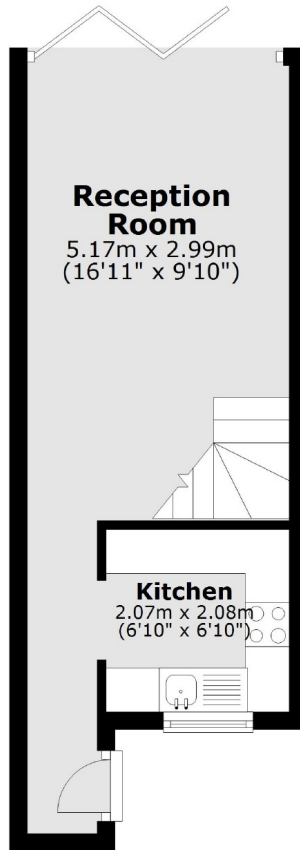
Fulwood Walk is a private residential cul-de-sac located off Augustus Road in Southfields. The property is close to both Southfields station and Wimbledon Common, as well as a Marks and Spencer and other amenities.

### Features

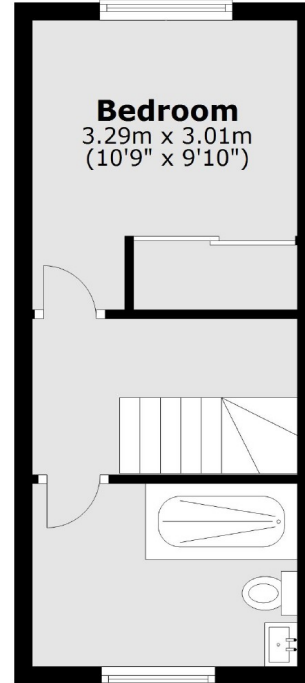
- House
- One Bedroom
- Cul-de-sac
- Garden
- Wooden Floors
- Recently Redecorated

# Fulwood Walk, London, SW19

## Ground Floor



## First Floor



Total area: approx. 45.0 sq. metres (483.9 sq. feet)