



SCAN ME



**Semi-Detached**

**Beds 4, Baths 2, Lounges 2**



**Witham Road, Isleworth, TW7**

**£1,000,000 Freehold**



## Property Description

### Property Description

🏠 Beautiful Edwardian home offering timeless character and modern family living.

Set on a quiet residential street in the heart of Spring Grove, this halls-adjointing semi-detached house (circa 1920) has been comprehensively renovated to an exceptional standard. The property retains its original charm—ornate ceiling roses, timber sash windows, cast iron radiators—while introducing high-spec finishes and flexible living spaces ideal for contemporary lifestyles. It is also brought to market with no onward chain.

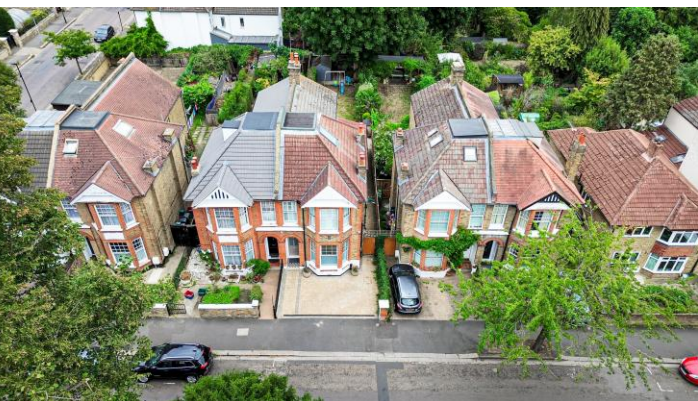
### ✦ Key Features

- Approx. 1955 sqft / 181 sqm of internal living space across three floors
- Landscaped 63ft east-facing rear garden with porcelain patio and powered outbuilding
- Two elegant reception rooms with period features and solid oak flooring
- Quadruple aspect open-plan kitchen/dining/family space with oversized skylight and bifold doors
- Bespoke Tom Howley kitchen with silestone quartz worktops and premium German appliances
- Four spacious bedrooms including a vaulted top-floor suite with ensuite and eaves storage
- Luxury four-piece family bathroom with slipper bath and rainforest shower
- Full renovation including upgraded electrics, plumbing, and insulation
- Underfloor heating in kitchen/family area and bathrooms
- Cat6 ethernet ports in selected rooms for high-speed connectivity
- Security features include alarm system and CCTV









- Off-street parking with EV charging and side access to rear garden
- Brought to market with no chain

#### Layout Summary

- Ground Floor
  - Entrance hallway with storage and staircase
  - Two reception rooms with period features
  - Spacious open-plan kitchen/dining/family area with bifold doors to garden, oversized skylight, underfloor heating, and bespoke cabinetry — ideal for entertaining and everyday family life
- First Floor
  - Two double bedrooms
  - Luxury four-piece family bathroom
- Second Floor
  - Vaulted double bedroom with ensuite shower room
  - Extensive eaves storage

#### Transport Links

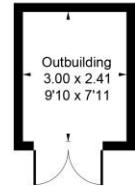
- Isleworth Station (South Western Railway) – Direct trains to Waterloo, Richmond & Clapham Junction
- Osterley Station (Piccadilly Line) – Easy access to Heathrow and Central London
- Bus Routes – H37, 267, 281, H20, H22 connecting to Richmond, Hounslow & Chiswick
- Road Access – Quick links to M4, A4, and A316

#### Additional Information

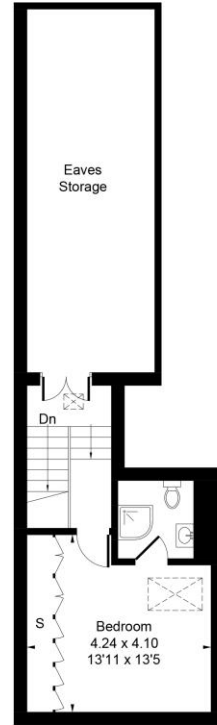
- Tenure: Freehold
- Size: Approx. 1955 sq ft / 181 sq m
- Council Tax: Band F (London Borough of Hounslow) - £3013 p/a
- EPC Rating: E

Approximate Gross Internal Area (Excluding Eaves Storage)

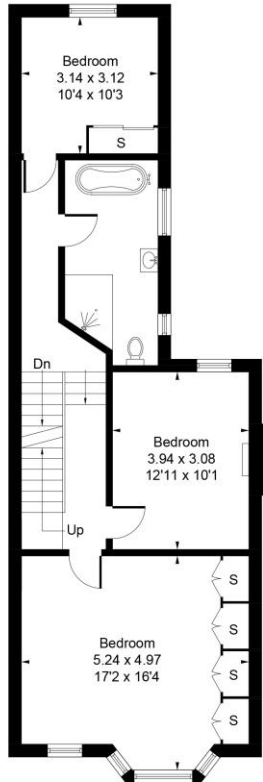
181.72 sq m / 1956 sq ft  
 Outbuilding = 7.25 sq m / 78 sq ft  
 Total = 188.97 sq m / 2034 sq ft



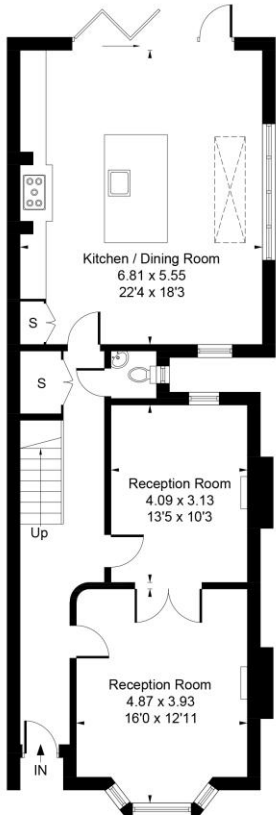
(Not Shown In Actual Location / Orientation)



Second Floor



First Floor



Ground Floor

Whilst every attempt has been made to ensure the accuracy of the floor plan contained here, measurements of doors, windows, rooms and any other items are approximate and no responsibility is taken for any error, omission, or mis-statement. This plan is for illustrative purposes only and should be used as such by any prospective purchaser.



**Woodlands Estates,**  
 16 St Johns Road, Isleworth,  
 Middlesex, TW7 6NW

[www.woodlandsestates.com](http://www.woodlandsestates.com)  
 020 8560 3228  
[mail@woodlandsestates.com](mailto:mail@woodlandsestates.com)

Agents Note: Whilst every care has been taken to prepare these sales particulars, they are for guidance purposes only. All measurements are approximate are for general guidance purposes only and whilst every care has been taken to ensure their accuracy, they should not be relied upon and potential buyers are advised to recheck the measurements.

Follow us on Social Media

