



Price

£315,000

Leasehold

2x  2x  1x 

Longley Road,  
Chichester, West  
Sussex, PO19

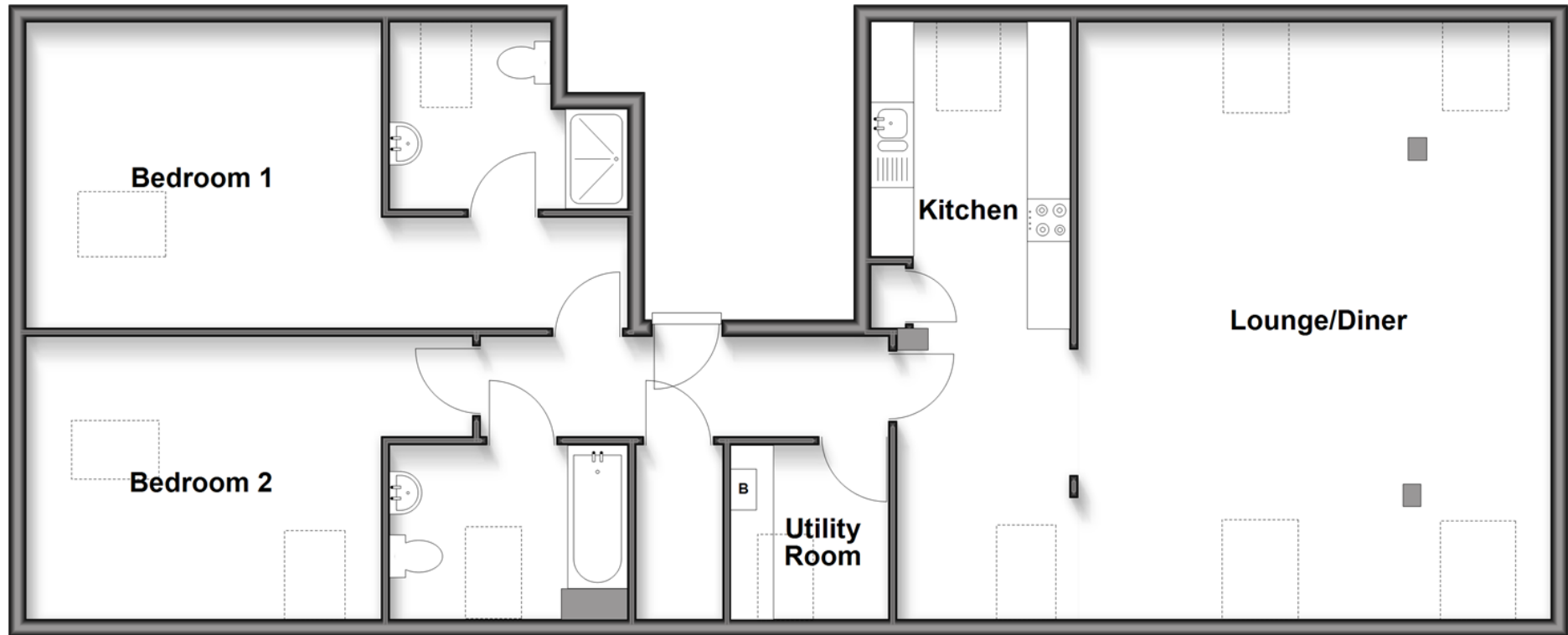
**OVER 60?**

Secure this property  
for up to **59% less!**

**cubitt & west**  
Helping you move forwards

## Second Floor

Approx. 114.1 sq. metres (1228.3 sq. feet)



## Accommodation

### SECOND FLOOR

Hallway

Kitchen: 11'5 x 7'7 (3.48m x 2.31m)

Lounge/Diner: 23'1 x 17'11 (7.04m x 5.46m) plus 11'1 x 7'7 (3.38m x 2.31m)

Utility Room: 6'8 x 5'8 (2.03m x 1.73m)

Bedroom 1: 23'2 into door well x 11'10 (7.07m x 3.61m)

En-Suite Shower Room: 7'2 x 5'11 (2.19m x 1.80m)

Bedroom 2: 17'2 into door well x 10'11 (5.24m x 3.33m)

Bathroom: 9'4 x 8'6 (2.85m x 2.59m)

### OUTSIDE

Communal Gardens

Allocated Parking



## Main features

- Beautifully presented second floor apartment in sought-after development
- Highly social living area which is flooded with natural light
- Modern fixtures & fittings throughout
- Benefits from an allocated parking space
- Close to the local shops & amenities
- Excellent public transport links
- Generous sized accommodation throughout



### Nearest Schools

Primary Schools: Jessie Youngusband Primary 0.7 miles, Portfield Community Primary 0.7 miles, March CofE Primary, The 0.9 miles

Secondary Schools: Fordwater School, Chichester 0.2



### Transport Information

Train Stations: Chichester 1.3 miles, Fishbourne 2.2 miles, Bosham 3.5 miles



### Address

Longley Road, Chichester, West Sussex, PO19



### Directions

For directions to this property please contact us.



**cubitt&west**  
Helping you move forwards

Call Chichester Branch 01243 786581 ■ [cubittandwest.co.uk](http://cubittandwest.co.uk)



- Legal advice should be taken to verify fixtures/fittings, planning, alterations and/or lease details
- Appliances & services are untested, dimensions are approximate and floor plans are not to scale
- Through a Homewise Home For Life Plan people aged 60+ can secure this property for up to 59% less, by purchasing a Lifetime Lease.



40414535/20250514/CNW/MH