



ZAFER CETINEL POWERED BY **exp**™ **UK**

@ zafer.cetinel@exp.uk.com

zafercetinel.exp.uk.com

01242 374 844

Chiltern Road, Prestbury, Cheltenham, GL52 5JQ

£385,000

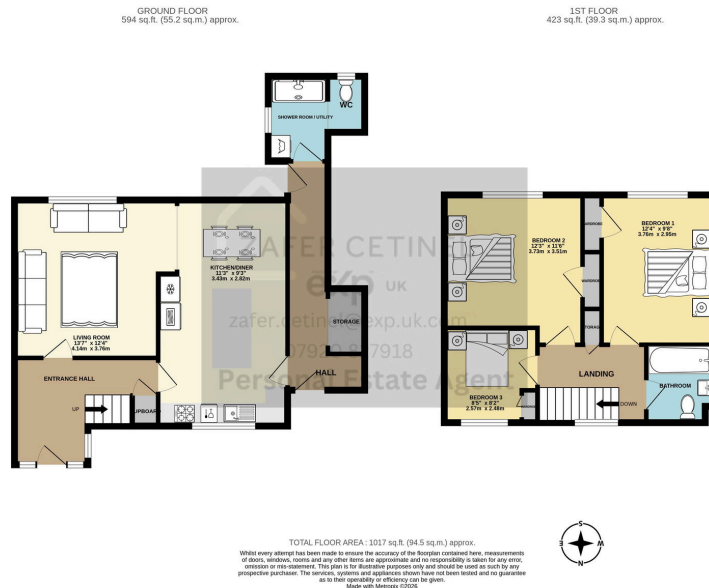
🛏 3 🚿 2 🚗 1



- PRESTBURY, CHILTERN ROAD, CHELTENHAM
- ALL MOST EVERYTHING IN THE HOUSE IS BRAND NEW
- ALL INTEGRATED KITCHEN APPLIANCES
- GREAT SCHOOL CATCHMENT FOR ALL SCHOOLS INCLUDING ST MARYS PRESTBURY
- NEWLY RENOVATED TO A HIGH STANDARDS
- LARGE KITCHEN / DINER WITH A CENTRAL ISLAND
- SEPARATE UTILITY / SHOWER ROOM DOWNSTAIRS
- THREE DOUBLE BEDROOMS AND TWO BATHROOMS
- REF ZAFER CETINEL ROAD



Recently refurbished, this stunning semi-detached home is located in the highly desirable area of Prestbury, Cheltenham. Ideal for families, it is within easy reach of excellent schools, including St. Mary's Federation. Boasting a entrance hall, the brand-new kitchen is equipped with integrated appliances and a central island with solid wood worktops, flowing into a dining area and a light-filled living room that opens to the rear garden via bi-fold patio doors. The first floor features three generous double bedrooms with built-in wardrobes, and a beautifully designed bathroom with a shower over the bath. Additional space include a side hall with storage, a utility room/shower room. The property offers ample off-road parking at the front and a garden at the rear, complete with wooden sheds. Further benefits comprise new double-glazed windows, composite doors, an electric rewire, and stylish new flooring throughout.



Energy Efficiency Rating		
	Current	Potential
Very energy efficient - lower running costs		
(92 plus) A		
(81-91) B		86
(69-80) C		
(55-68) D	58	
(39-54) E		
(21-38) F		
(1-20) G		
Not energy efficient - higher running costs		
England & Wales	EU Directive 2002/91/EC	

eXp World UK Ltd is a registered company at Level 37, 25 Canada Square, London, E14 5LQ.

Registered company number is 12016573. VAT Registration Number is 327 4120 29