



## WESTBOURNE GROVE TERRACE, W2

£330,000

No onward chain  
Separate kitchen  
Studio  
Lift  
Great location  
EPC- E

@marshandparsons  
marshandparsons.co.uk

MARSH &  
PARSONS



# ABOUT THE PROPERTY

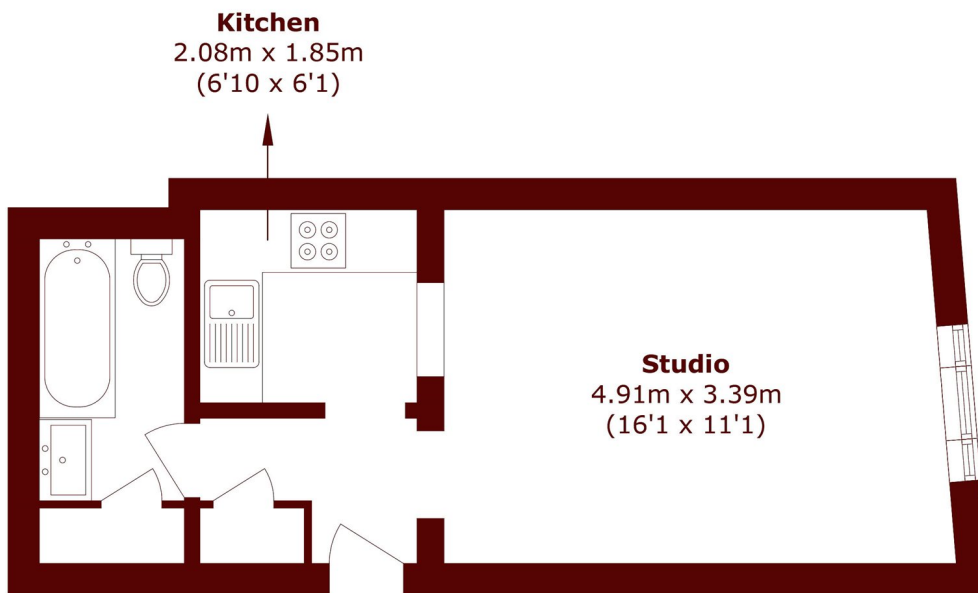
A well presented studio ideally located moments from Westbourne Grove and Queensway. This charming property is in excellent condition and is situated on the lower ground floor of an attractive period conversion.

Westbourne Grove Terrace is ideally positioned just off Westbourne Grove, offering a wide array of boutique shops, cafés, and restaurants only moments away. Bayswater and Queensway Underground stations are within easy walking distance, as are the open green spaces of Kensington Gardens and the newly redeveloped Whiteleys.



# STEP INSIDE

## WESTBOURNE GROVE TERRACE



Total area (approx.): 28.8 sq. m (310.0 sq. ft)

Notting Hill  
020 7313 2890

Energy Rating: E We aim to make our particulars both accurate and reliable. However, they are not guaranteed; nor do they form part of an offer or contract. If you require clarification on any points then please contact us, especially if you're traveling some distance to view. Please note that appliances and heating systems have not been tested and therefore no warranties can be given as to their good working order

MARSH &  
PARSONS