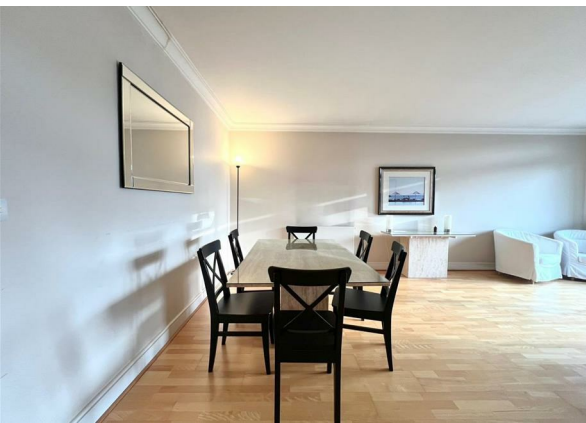
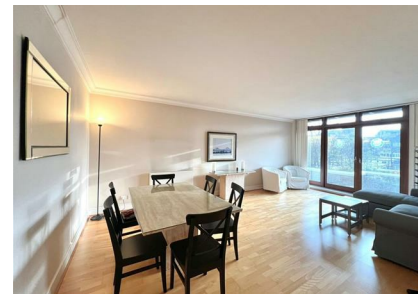
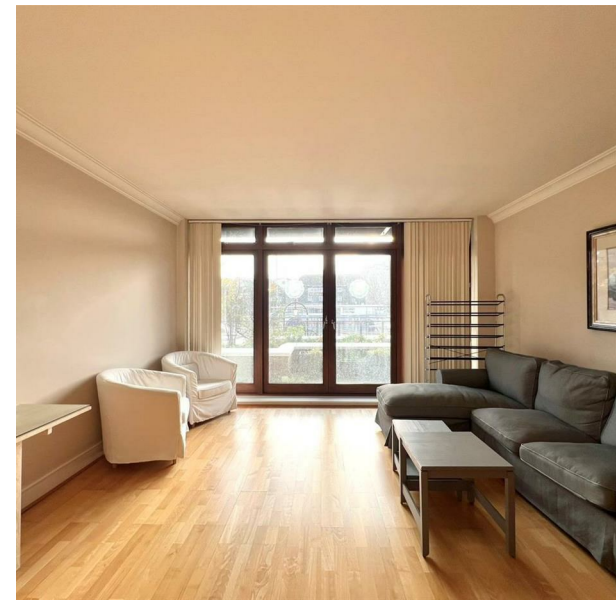


Cormorant Lodge, Flat 2 Thomas More Street, Wapping, London, E1W 1AU  
£3,500 Per Month

COMPLETION  
SALES & LETTINGS



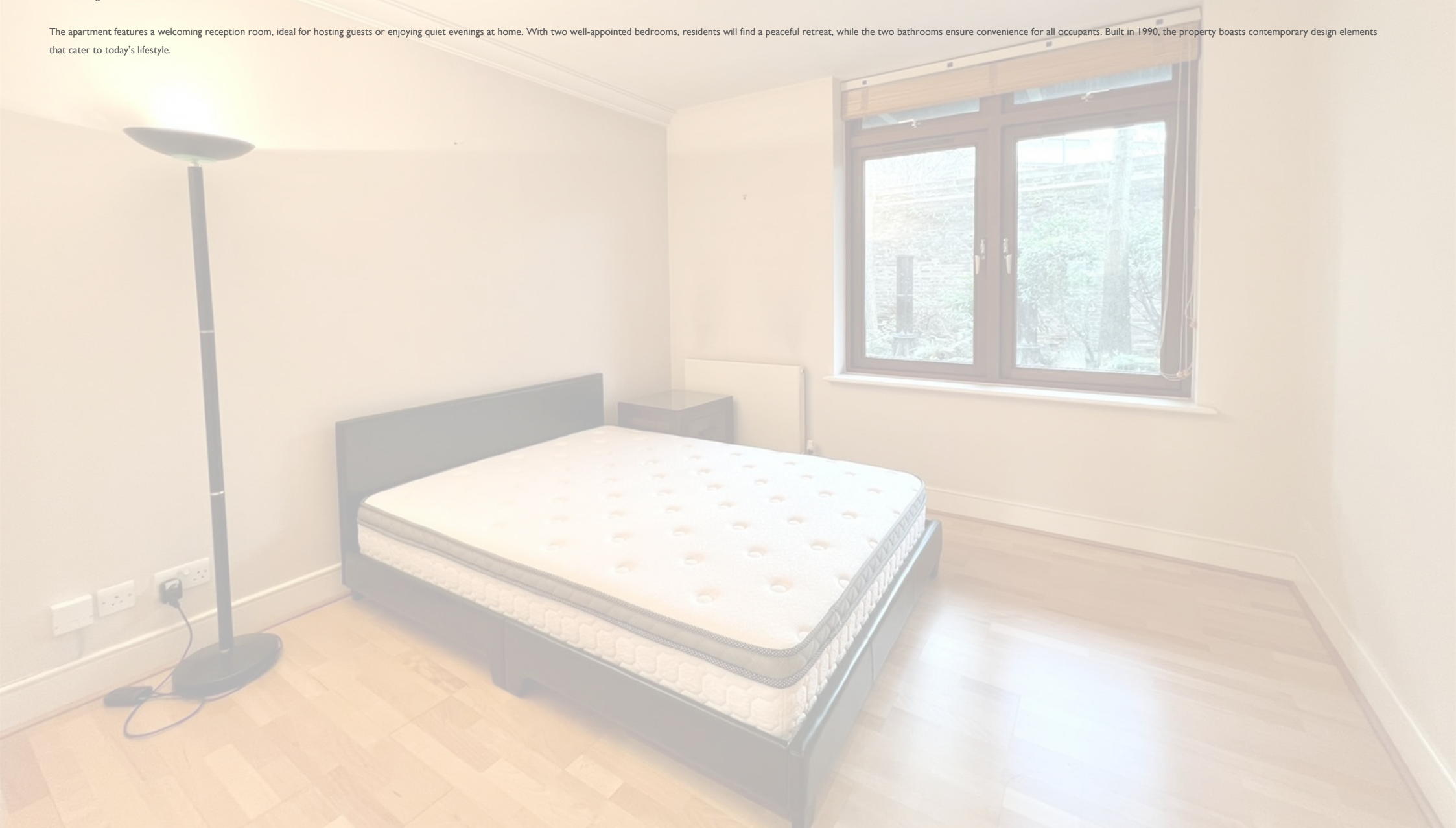
# Cormorant Lodge, Flat 2 Thomas More Street, Wapping, London, E1W 1AU

£3,500 Per Month

Council Tax Band: G

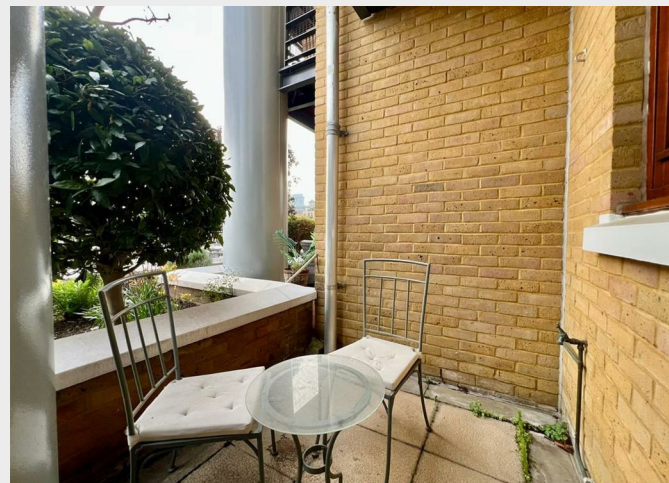
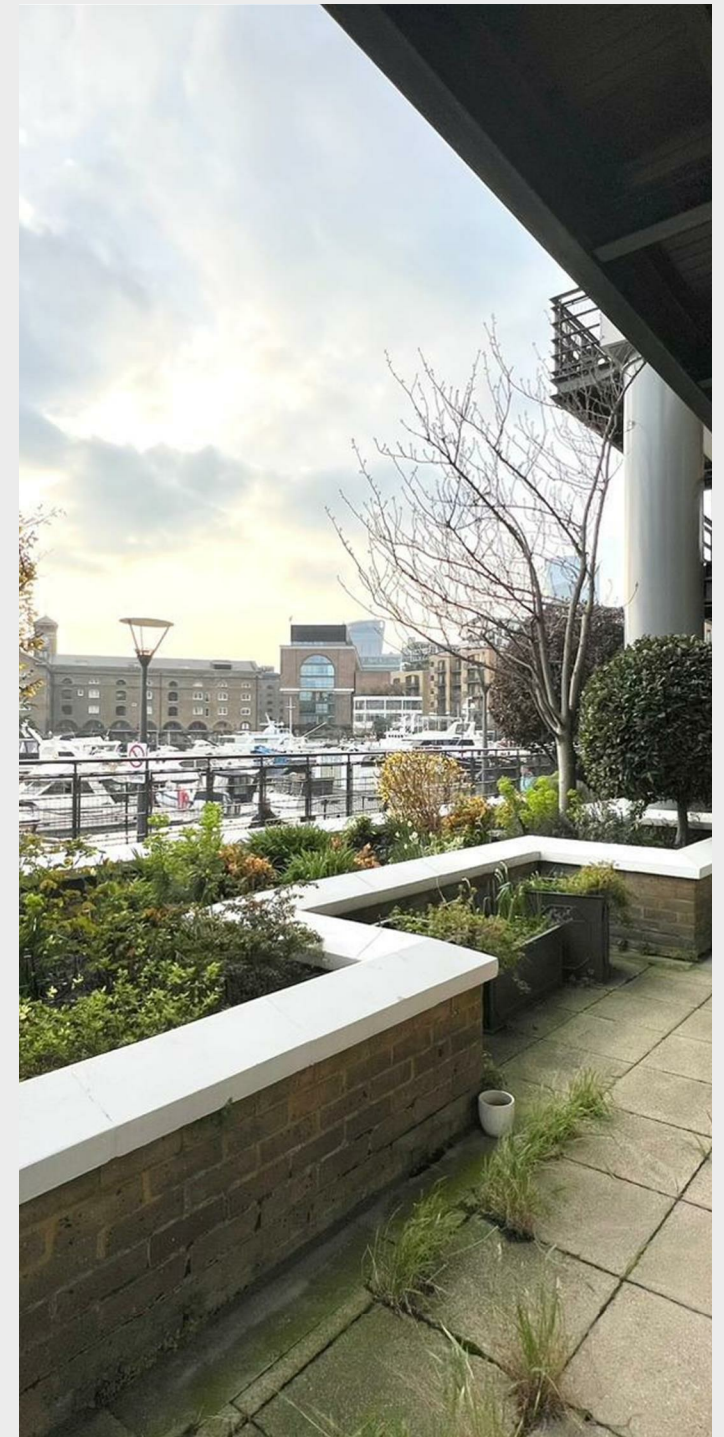
Nestled in the vibrant area of Wapping, this splendid two-bedroom apartment on Thomas More Street offers a perfect blend of comfort and modern living. Available for rent at £3,500 per calendar month, this purpose-built flat spans an impressive 1,044 square feet, providing ample space for both relaxation and entertaining.

The apartment features a welcoming reception room, ideal for hosting guests or enjoying quiet evenings at home. With two well-appointed bedrooms, residents will find a peaceful retreat, while the two bathrooms ensure convenience for all occupants. Built in 1990, the property boasts contemporary design elements that cater to today's lifestyle.









337 Forest Road  
 London  
 E17 5JR  
 02085277007  
 enquiries@completion.co.uk  
 completion.co.uk

