

for sale

offers in the region of **£190,000** Freehold



Short Street Darlaston Wednesbury WS10 8BS

Two-Bedroom Mid-Terraced Property with
On-Street Parking

This well-presented two-bedroom mid-terraced property offers comfortable and practical living, ideally suited to first-time buyers, investors, or those looking to downsize.

Residential Sales & Lettings | Mortgage Services |
Conveyancing | Surveyors | Land & New Homes



Property Details

Lounge 11' 5" x 12' 9" (3.48m x 3.89m)

Front aspect double glazed window, radiator and laminate flooring.

Dining Room 11' x 12' 9" (3.35m x 3.89m)

Rear aspect double glazed window and radiator.

Kitchen 8' 11" x 5' 1" (2.72m x 1.55m)

Side aspect double glazed window, wall and base units, sink and drainer, part tiled walls and door to garden.

Shower Room

Shower cubicle, w/c, wash hand basin and radiator.

Landing

Doors to bedrooms.

Bedroom One 11' x 13' (3.35m x 3.96m)

Rear aspect double glazed window and radiator.

Bedroom Two 11' 5" x 12' 9" (3.48m x 3.89m)

Front aspect double glazed window and radiator.

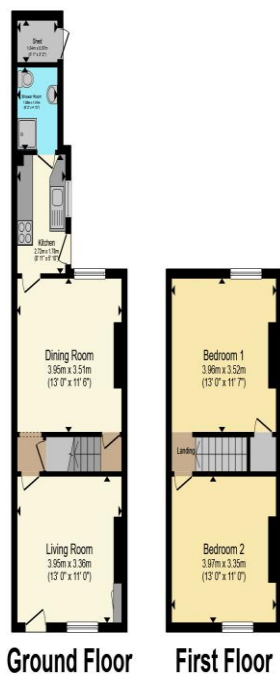
Front

On street parking.

Rear

Artificial grass and patio area.





Total floor area 72.9 m² (785 sq.ft.) approx

This floor plan is for illustrative purposes only. It is not drawn to scale. Any measurements, floor areas (including any total floor area), openings and orientation are approximate. No details are guaranteed, they cannot be relied upon for any purpose and they do not form part of any agreement. No liability is taken for any error, omission or misstatement. A party must rely upon its own inspection(s). Powered by www.propertybox.io



To view this property please contact Paul Dubberley on

T 0121 505 3533
E wednesbury@pauldubberley.co.uk

97 Walsall Street
 WEDNESBURY WS10 9BY

Property Ref: PWE104379 - 0004

Tenure:Freehold EPC Rating: E

Council Tax Band: A

1. MONEY LAUNDERING REGULATIONS Intending purchasers will be asked to produce identification documentation at a later stage and we would ask for your co-operation in order that there will be no delay in agreeing the sale. 2. These particulars do not constitute part or all of an offer or contract. 3. The measurements indicated are supplied for guidance only and as such must be considered incorrect. Potential buyers are advised to recheck measurements before committing to any expense. 4. We have not tested any apparatus, equipment, fixtures, fittings or services and it is in the buyers interest to check the working condition of any appliances.

Paul Dubberley is a trading name of Connells Residential which is registered in England and Wales under company number 1489613, Registered Office is Cumbria House, 16-20 Hockliffe Street, Leighton Buzzard, Bedfordshire, LU7 1GN. VAT Registration Number is 500 2481 05.

see all our properties at www.pauldubberley.co.uk | www.rightmove.co.uk | www.zoopla.co.uk