



Kingston Road, KT1

£300,000

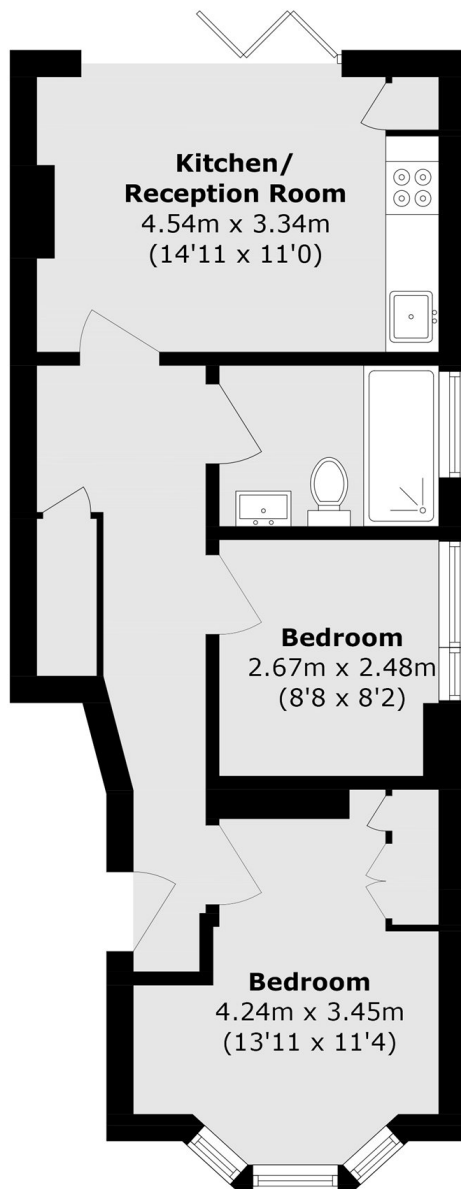
A very well presented light and bright modern ground floor period property in a great location. The property is well kept throughout and offers plenty of light and space, it has two double bedrooms, a separate bathroom, open plan living space and a good sized private garden.

Kingston Road is located in between Kingston and New Malden. There are buzzing high streets a short distance away with plenty of restaurants and cafes, and shopping! New Malden and Kingston Stations are close by and plenty of bus routes into the city.

Features

- Period Property
- Ground Floor
- Allocated Parking
- Private Garden
- Great Location
- Chain Free

Kingston Road,
Kingston Upon Thames, KT1



Total area (approx.): 49.0 sq. m (527.4 sq. ft)