



## West One Central, Sheffield S1 4JN £800 Per Month

**\*\*DEPOSIT FREE OPTION AVAILABLE\*\*** Available to let is this beautifully presented and well-proportioned one double bedroom, one bathroom apartment, situated in a prime position overlooking Devonshire Green, offering attractive open views.

Accessed via a secure intercom entry system, the apartment features a welcoming entrance hallway, a spacious double bedroom, a contemporary bathroom, and a bright open-plan living, dining, and kitchen area. The kitchen is fitted with a range of appliances, providing a practical and functional space for everyday living.

Additional benefits include access to well-maintained communal gardens.

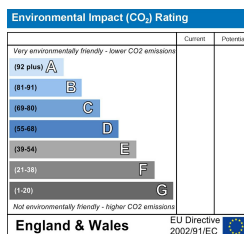
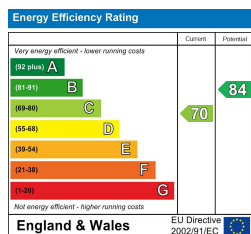
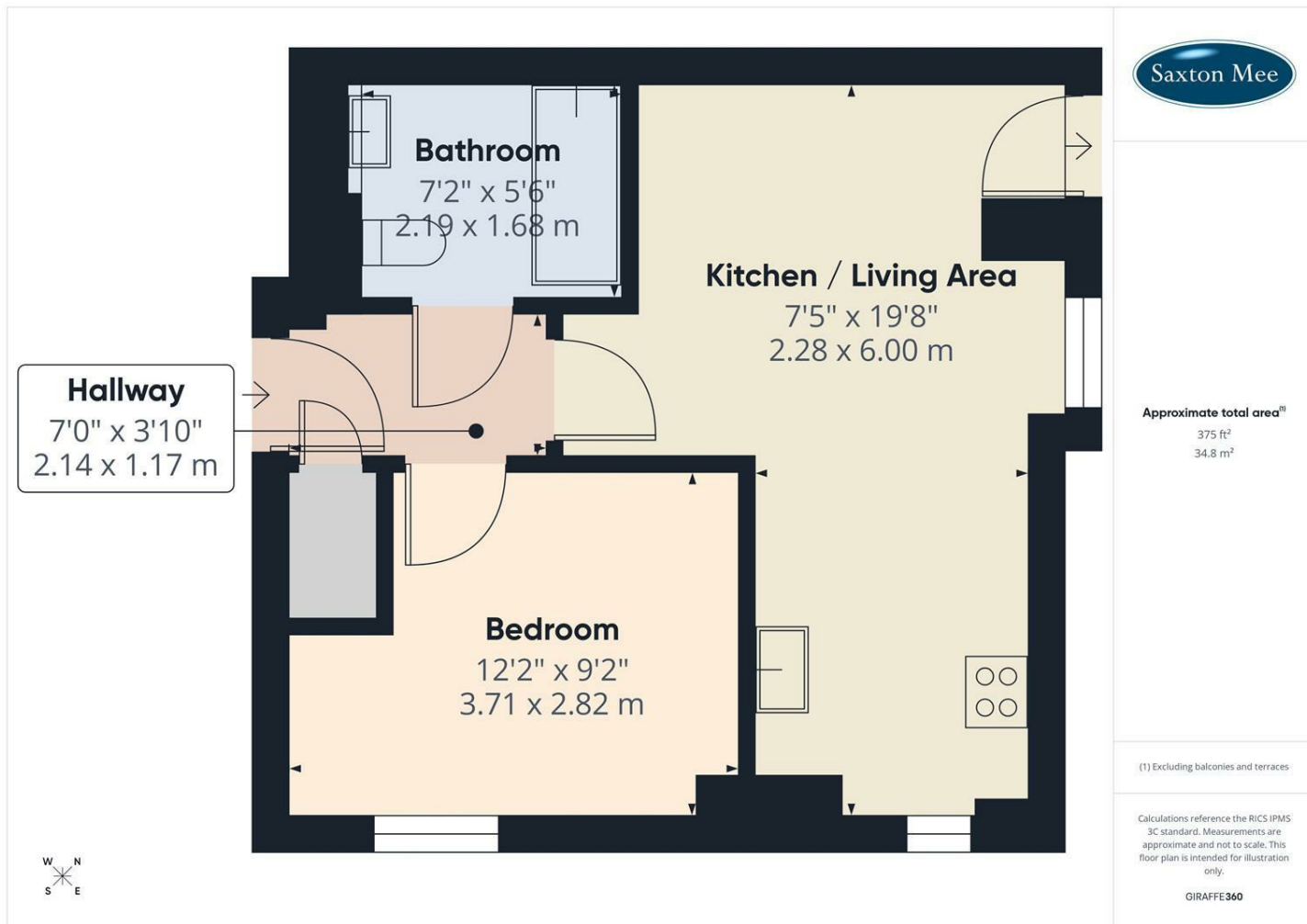
Located in the heart of the Devonshire Quarter, the apartment is ideally placed for access to the city centre, excellent transport links including the tram to the railway station, and a wide range of restaurants, bars, and nightlife.

Part Furnished

Communal Gardens

Restrictions: No smokers

EPC: C



Banner Cross  
Hathersage  
Bakewell  
Matlock  
www.saxtonmee.co.uk

949-951 Ecclesall Road, Sheffield S11 8TN  
3 Bank View, Main Road, Hathersage S32 1BB  
Matlock Street, Bakewell DE45 1EE  
27 Causeway Lane, Matlock, DE4 3AR

T: 0114 268 3241  
T: 01433 650009  
T: 01629 815307  
T: 01629 828250

E: bannercross@saxtonmee.co.uk  
E: hathersage@saxtonmee.co.uk  
E: bakewell@saxtonmee.co.uk  
E: matlock@saxtonmee.co.uk