

Adams Close, Wickhurst Green

Offers Over £575,000

🛏 4 🚿 3 🚗 1



An impressive Link Detached Family Home boasting Spacious Accommodation over three floors, a 33ft Open Plan Living Area, Stylish Fitted Kitchen, Three Modern Bathrooms and an incredible Master Suite.

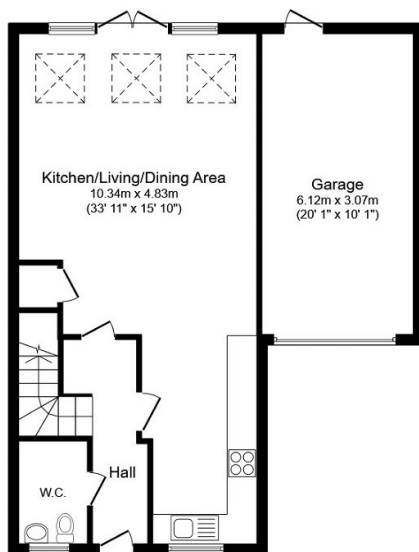
Tenure: Freehold

Council Tax: E

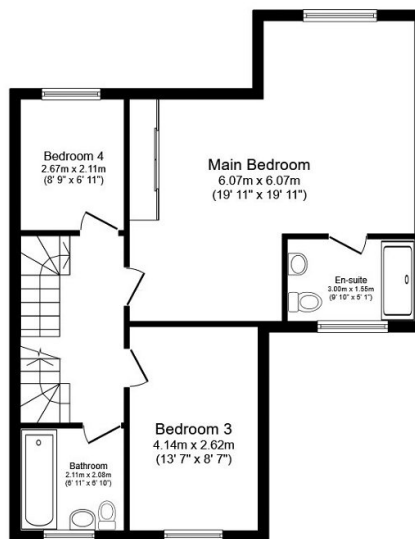
EPC Rating: Current B - Potential A

Key Features

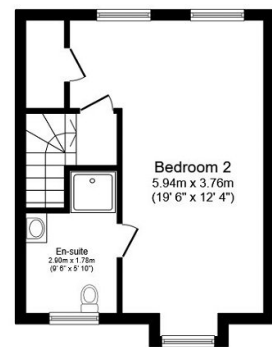
- Link Detached Family Home
- South Facing Rear Garden
- 33ft Open Plan Living Area
- Stylish 11ft Fitted Kitchen
- Cul De Sac Location
- Four Generous Bedrooms
- Two En Suite Shower Rooms
- 19'11 x 19'11 Master Suite
- Accommodation Over Three Floors
- Driveway Parking and Garage



Ground Floor



First Floor



Second Floor

Total floor area 159.9 m² (1,721 sq.ft.) approx

This plan is for illustration purposes only and may not be representative of the property. Plan not to scale. Powered by PropertyBox