

2

BED

type your text here

12 Primrose Way, Bishops Lane, Lewes, BN8 5LD



Shared ownership £38,500

Freehold

**phillipmann**  
we do more

[www.phillipmann.com](http://www.phillipmann.com)



## inbrief...

\*\* LAST FEW REMAINING - SHARED OWNERSHIP FROM 10% \*\*

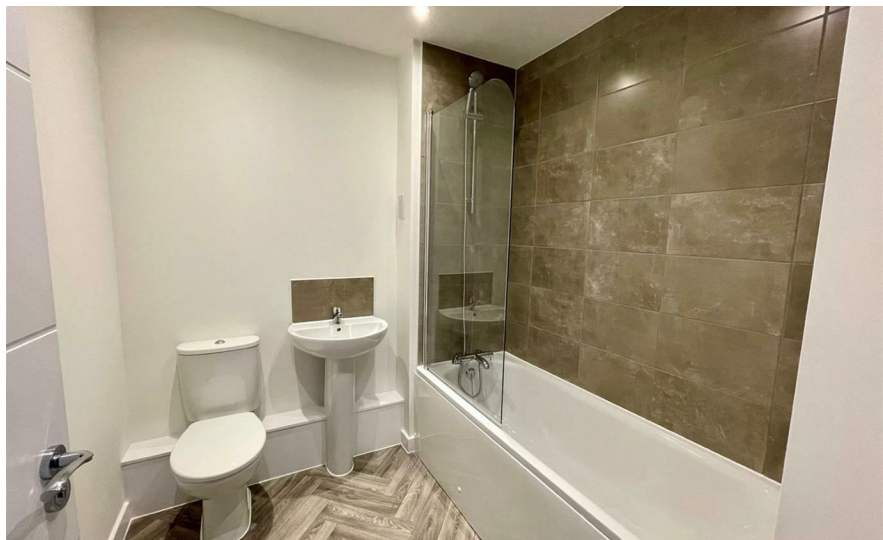
Brand New Two Bedroom House available for shared ownership with Stonewater Housing.

Phillip Mann estate agents are proud to present this collection of new two and three bedroom houses for shared ownership in Bishops Lane, Ringmer. These new homes offer a thoughtfully designed, spacious interior layout and have been designed around sustainability. All homes will benefit from a high energy-efficient rating, an electric vehicle charging point, an air source heat pump and thermally efficient windows and doors. Along with solar PV panels on the roof!

Ringmer is a large village in East Sussex, three miles from Lewes. There are local shops, places to eat, GP surgery, pharmacy and a dentist. The village has a strong sense of community and Ringmer offers excellent access to the A26 and there are two nearby railway stations at Lewes and Cooksbridge. From Lewes, Brighton is 17 minutes by train. For further travel, Gatwick airport is approximately 45 minutes' drive away.

Mid Terrace - 10% share: £38,500  
Open market value: £385,000  
Monthly Rent: £794.06  
Service charge: £81.37 per month

For further information please call 01273 517517.



## moreinfo...

Phillip Mann Newhaven Office  
16 Bridge Street, Newhaven, BN9 9PJ  
01273 517517

To see more details on this & all our homes go to  
[www.phillipmann.com](http://www.phillipmann.com)

