



2A Crowmere Road, Shrewsbury, SY2 5HS

2 bedroom detached house — £254,800 Freehold

2A Crowmere Road, Shrewsbury, SY2 5HS

Coopergreenpooks.co.uk

£254,800 Freehold — 2 bedroom detached house

sales@cgpooks.co.uk

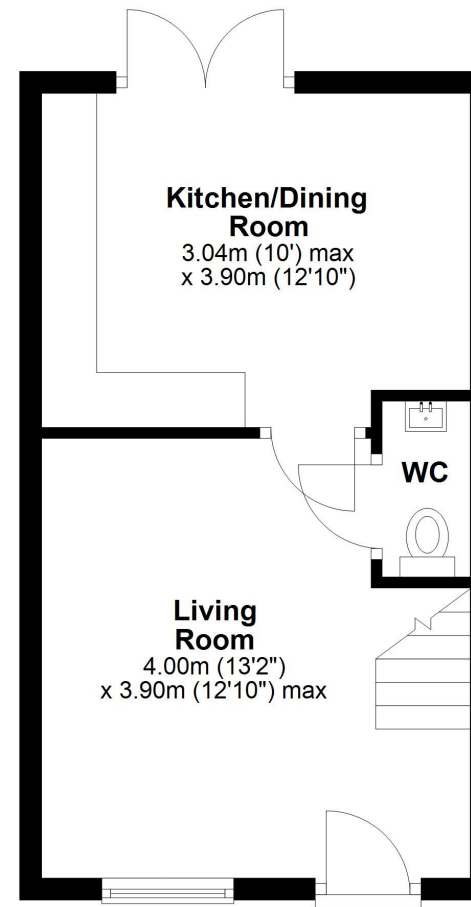
This individual detached house offers thoughtfully designed and well-presented accommodation, situated within walking distance of the town centre, while benefitting from a private rear garden and plenty of driveway parking.

KEY FEATURES

- Good sized living room with under stairs WC/cloakroom and staircase to landing
- Open plan kitchen/dining room, complete with a range of fitted units and glazed double doors onto the garden
- Master bedroom with built-in storage and two windows to front
- A further generous bedroom and separate family bathroom with shower
- uPVC double glazed windows and gas fired central heating
- Private rear garden, laid to lawn with paved sun terrace, garden store, and gated access to side
- To the front of the property is a driveway providing plenty of off-street parking
- Having been built in 2018, this unique detached house is equipped with modern fixtures and fittings throughout
- A great location within a popular residential area, just a short distance from some excellent amenities, playing fields, riverside walks, and less than a mile from the town centre

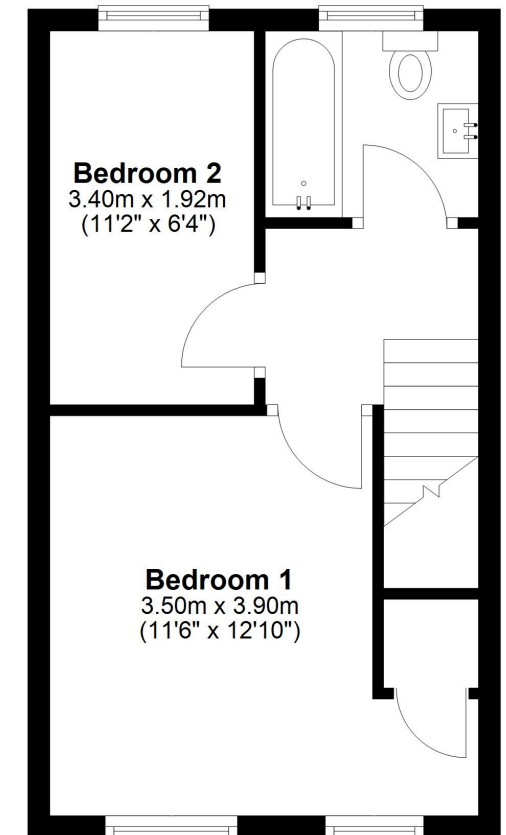
Ground Floor

Approx. 27.9 sq. metres (300.0 sq. feet)



First Floor

Approx. 27.9 sq. metres (300.0 sq. feet)



Total area: approx. 55.7 sq. metres (600.0 sq. feet)







rightmove 

 onTheMarket.com

 **RICS**
Regulated by RICS

Cooper Green Pooks
3 Barker Street
Shrewsbury
SY1 1QF

www.cgpooks.co.uk
sales@cgpooks.co.uk
01743 276666



2A Crowmere Road, Shrewsbury, SY2 5HS

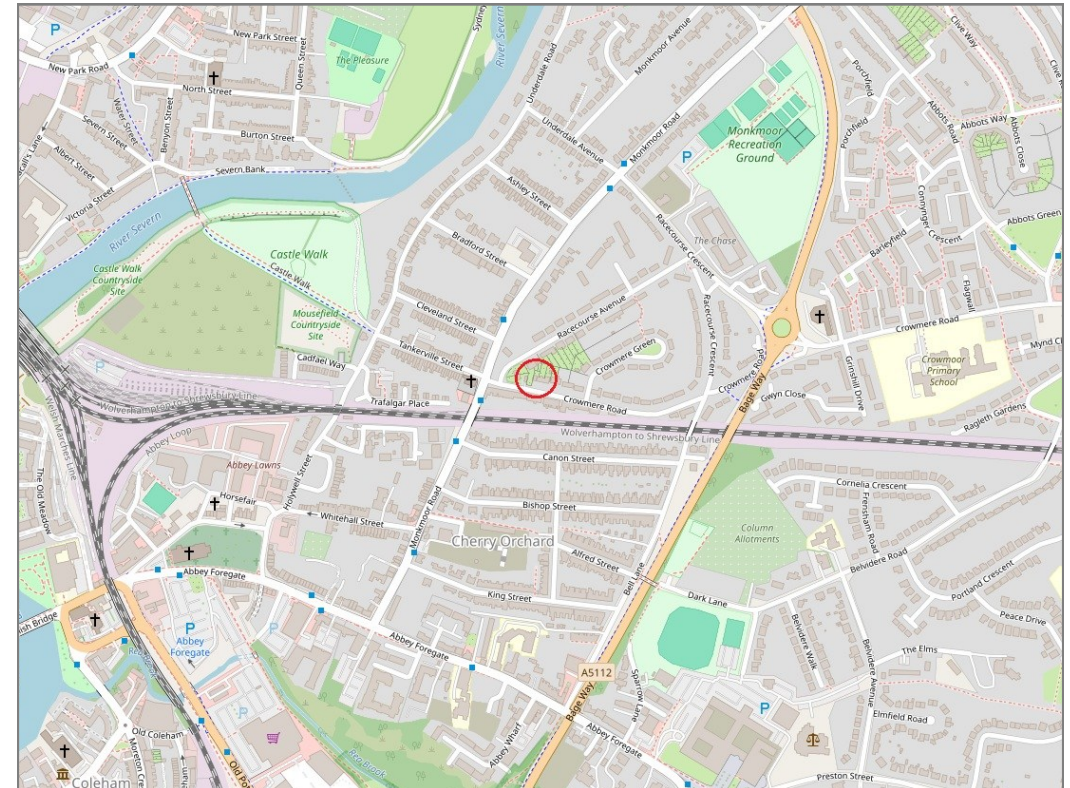
£254,800 Freehold — 2 bedroom detached house

sales@cgpooks.co.uk

rightmove

onTheMarket.com

RICS
Regulated by RICS



BOUNDARIES NOT CONFIRMED

Tenure	Freehold
Local Authority	Shropshire Council
Council Tax	Band B
EPC Band	Band C
Services	All mains services are connected

Expert mortgage advice available

3 Barker St, Shrewsbury SY1 1QF

Cooper Green Pooks
01743 276666



Your home may be repossessed if you do not keep up repayments on your mortgage.

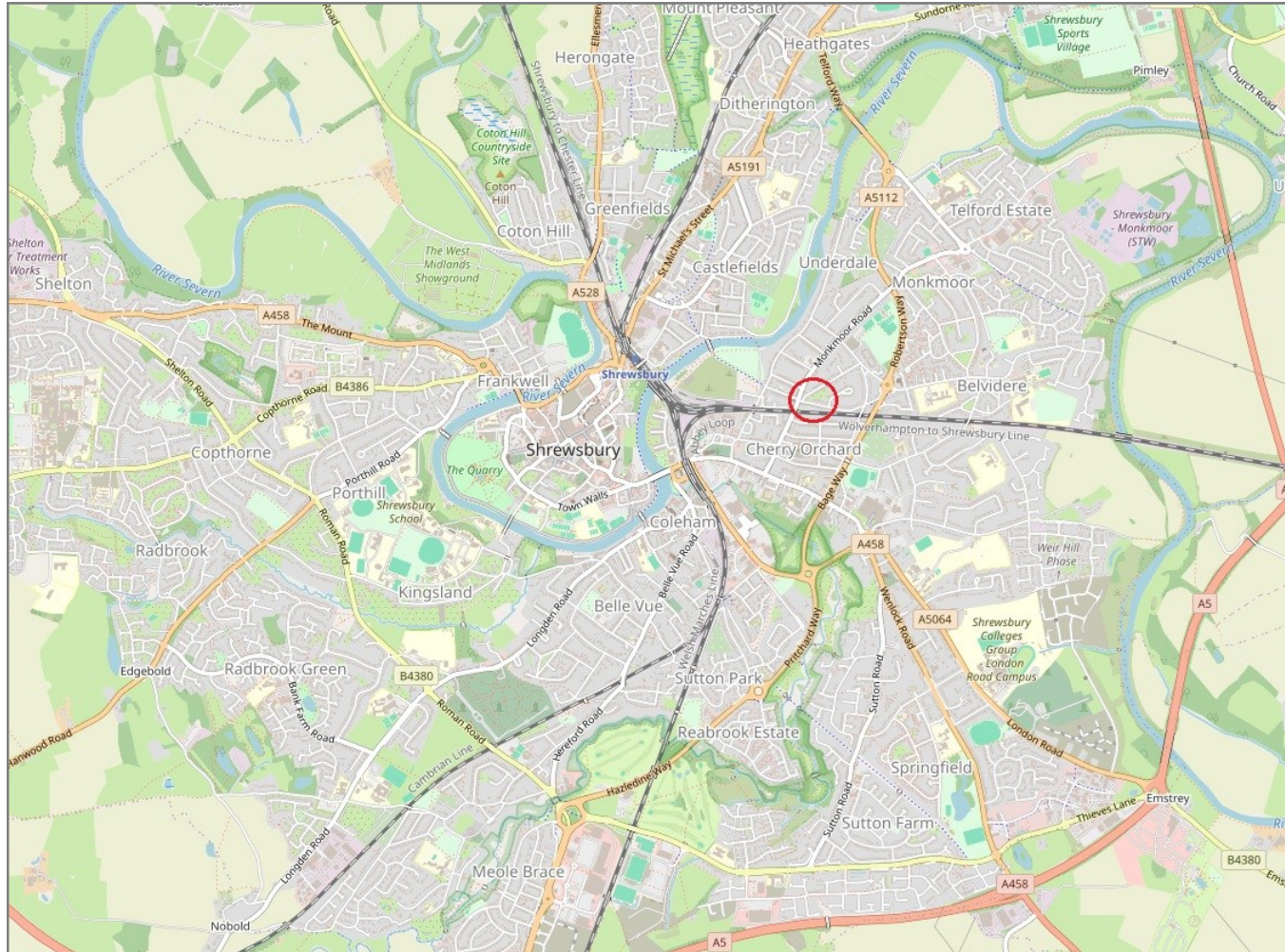
There may be a fee for mortgage advice. The actual amount you pay will depend upon your circumstances. The fee is up to 1% but a typical fee is 0.3% of the amount borrowed.

2A Crowmere Road, Shrewsbury, SY2 5HS

Coopergreenpooks.co.uk

£254,800 Freehold — 2 bedroom detached house

sales@cgpooks.co.uk



IMPORTANT NOTICE: Cooper Green Pooks for themselves and for the lessors or vendors of this property whose agents they are give notice that: 1 No appliances, services or service installations have been tested and no warranty as to suitability or serviceability is implied. Any prospective purchaser or lessee is advised to obtain verification from their surveyor or solicitor. 2. The particulars are set out as a general outline only for the guidance of the intended purchasers or lessees and do not constitute, nor constitute part of, an offer or contract. 3. All descriptions, reference to condition and necessary permissions for use and occupation and other details are given in good faith and are believed to be correct but any intending purchasers or lessees should not rely on them as statements or representation of fact but satisfy themselves by inspection or otherwise as to the correctness of each of them. 4. No person in the employment of Cooper Green Pooks has any authority to make or give any representation or warranty whatsoever in relation to this property. 5. All rentals and prices are quoted exclusive of Stamp Duty, legal and surveyors fees and any other associated purchasers or lessees costs. 6. Floor plans are indicative only and should not be relied on. 7. The plan showing the boundary of the property is indicative only and has not been checked against the legal title so should not be relied on. 8. All dimensions, floor areas and site areas are only approximate and should not be relied on. Dimensions are generally maximum room dimension.