



Paul Street, EC2A

£2,200 Per calendar month

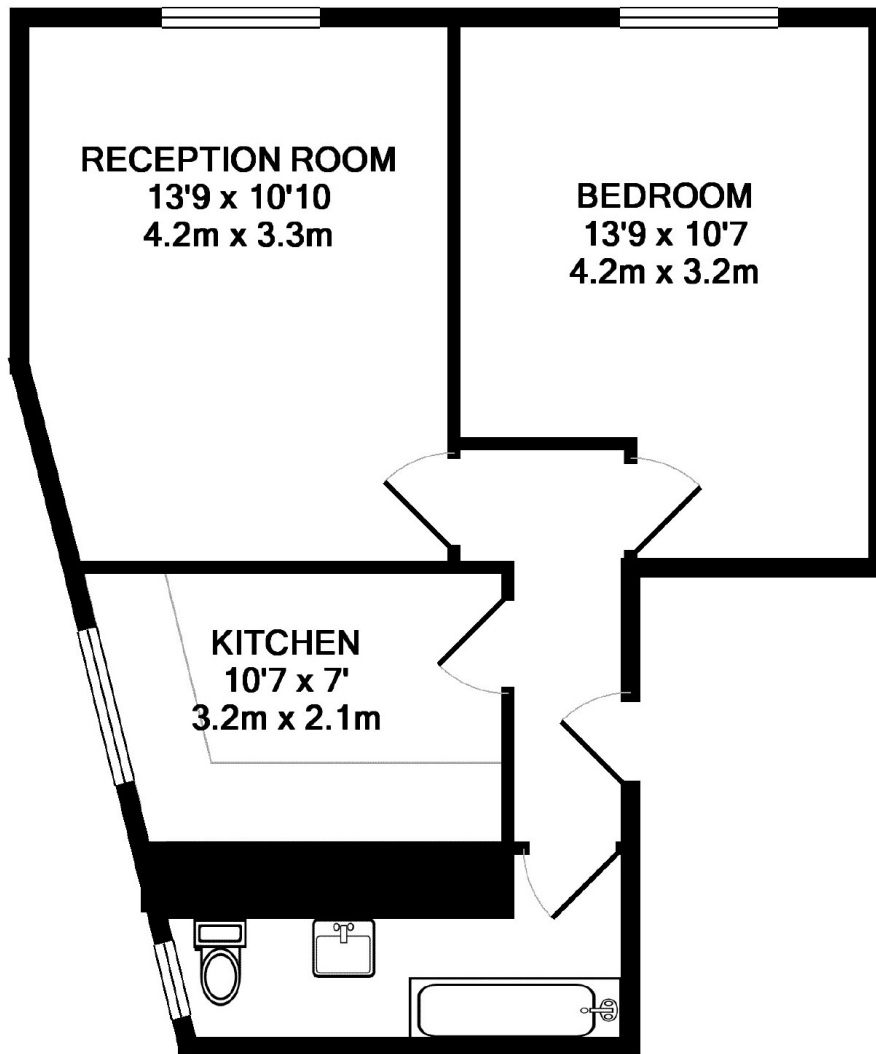
A one bedroom apartment in the heart of Shoreditch. The apartment has a separate reception with modern kitchen and a large bedroom. Further benefits include secure bike storage, new double glazing and a communal gardens at the rear of the building. The property is available furnished.

The apartment is located under half a mile from Liverpool St station and Old Street station as well as a short distance to Shoreditch High Street station. The apartment is also in prime Shoreditch location for all the local trendy bars, cafes and restaurants.

Features

- Double Glazing
- Secure Development
- Separate Kitchen
- Wooden Floors
- Great Location
- Furnished

Paul Street,
London, EC2A



TOTAL APPROX. FLOOR AREA 39.4 SQ.M. (424 SQ.FT.)

Whilst every attempt has been made to ensure the accuracy of the floor plan contained here, measurements of doors, windows, rooms and any other items are approximate and no responsibility is taken for any error, omission, or mis-statement. This plan is for illustrative purposes only and should be used as such by any prospective purchaser. The services, systems and appliances shown have not been tested and no guarantee as to their operability or efficiency can be given

Made with Metropix ©2008

Dexters

Shoreditch
44 Great Eastern Street
London
EC2A 3EP
Lettings
0207 483 6372

Energy Rating: C. We aim to make our particulars both accurate and reliable. However they are not guaranteed; nor do they form part of an offer or contract. If you require clarification on any points then please contact us, especially if you're traveling some distance to view. Please note that appliances and heating systems have not been tested and therefore no warranties can be given as to their good working order.

 **RICS** | Regulated
Estate Agent
and Letting Agent

dexters.co.uk