

SALES
242 Dedworth Rd
Windsor
Berkshire
SL4 4JR
Tel: 01753 621234
Email: post@horler.co.uk

SALES
1 Temple Cottage
The Green
Datchet, Berkshire
SL3 9BJ
Tel: 01753 546667
Email: mail@stephenuren.co.uk

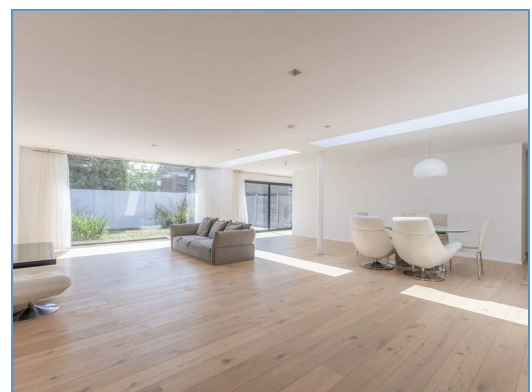


HORLER
Incorp. Stephen Uren



27 Martin Close, Windsor, SL4 5SP
£599,950

Nestled in the charming locale of Martin Close, Windsor, this beautifully presented bungalow is a true gem. Recently refurbished to a high standard, the property boasts an incredibly open plan living area that is perfect for both relaxation and entertaining.



Property Summary

With four generously sized bedrooms, three of which feature en-suite bathrooms, with a further WC for guests, this home offers ample space for families or those seeking a comfortable retreat. The spacious galley kitchen is well-equipped, making it a delightful space for culinary enthusiasts. The property also boasts underfloor heating

The landscaped garden provides a serene outdoor space, ideal for enjoying the fresh air or hosting gatherings with friends and family. Additionally, the property benefits from off-street parking, accommodating multiple vehicles with ease.

This bungalow combines modern living with the charm of Windsor, making it an excellent choice for anyone looking to settle in this picturesque area. Don't miss the opportunity to make this stunning property your new home.

General Information:

Tenure: Freehold

Council Tax Banding: E

Legal Note:

Although these particulars are thought to be materially correct their accuracy cannot be guaranteed and they do not form part of any contract

Energy Efficiency Rating		Current	Potential
Very energy efficient - lower running costs			
(92 plus) A			
(81-91) B			
(69-80) C			
(55-68) D			
(39-54) E			
(21-38) F			
(1-20) G			
Not energy efficient - higher running costs			
		56	74
England & Wales		EU Directive 2002/91/EC	

Environmental Impact (CO ₂) Rating		Current	Potential
Very environmentally friendly - lower CO ₂ emissions			
(92 plus) A			
(81-91) B			
(69-80) C			
(55-68) D			
(39-54) E			
(21-38) F			
(1-20) G			
Not environmentally friendly - higher CO ₂ emissions			
England & Wales		EU Directive 2002/91/EC	

