



Lime Tree Cottage Home Farm, Tidworth SP9 7AQ

welcome to

Lime Tree Cottage Home Farm, Tidworth

Nestled within an idyllic rural setting, 852 Lime Tree Cottage, is one of only four cottages, offering an exceptional blend of rustic charm and contemporary comfort.



Front

Large front laid to lawn, with a plethora of parking

Entrance Hall

Laminate flooring, radiator

Lounge

14' 3" x 12' 10" (4.34m x 3.91m)

Laminate flooring, log burner, radiator, front aspect double glazed window

Kitchen/Diner

15' 9" x 8' 11" (4.80m x 2.72m)

Renovated kitchen with laminate flooring, induction hob, extractor hood, two ovens, integrated dishwasher, storage cupboards, rear aspect double glazed window

Laundry Room

8' 4" x 5' 3" (2.54m x 1.60m)

Laminate flooring, space for washing machine, tumble dryer, fridge freezer ceiling hatch for access to electrics, door to garden

Family Bathroom

Renovated 18 months ago, tiled flooring, walk in shower, w/c sink with vanity, separate bath with shower attachment, heated towel rail, rear aspect double glazed window

Landing

Carpet, attic boarded out with loft ladder

Bedroom One

14' x 9' 8" (4.27m x 2.95m)

Carpet, built-in wardrobe, front aspect double glazed window, fireplace, radiator

Bedroom Two

12' 1" x 8' 11" (3.68m x 2.72m)

Rear aspect double glazed window, built-in wardrobe, carpet, fireplace, radiator

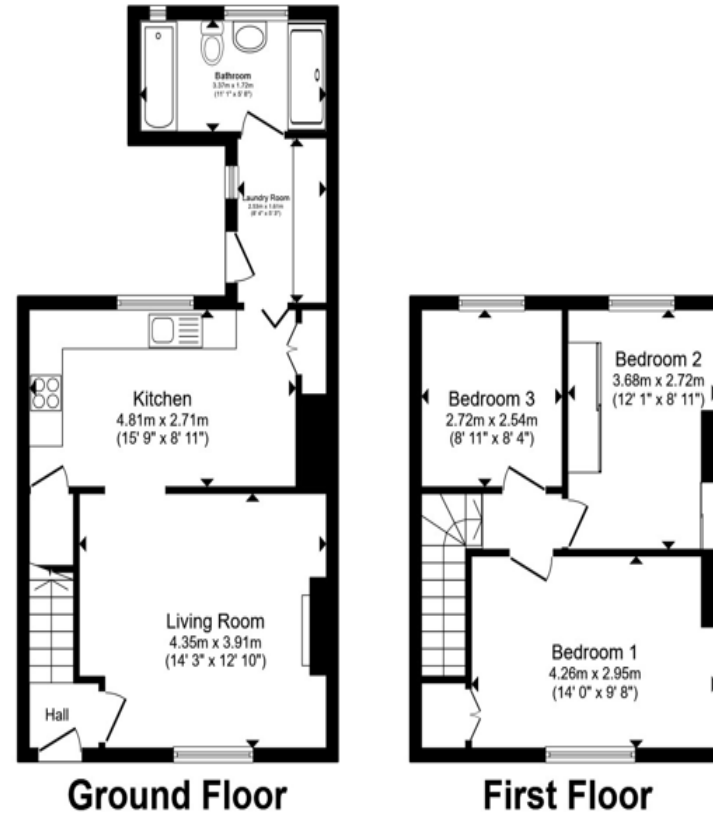
Bedroom Three

8' 11" x 8' 4" (2.72m x 2.54m)

Carpet, radiator, rear aspect double glazed window

Rear Garden

Laid to lawn, two patio areas, outside tap and side access



Total floor area 82.3 m² (886 sq.ft.) approx

This floor plan is for illustrative purposes only. It is not drawn to scale. Any measurements, floor areas (including any total floor area), openings and orientation are approximate. No details are guaranteed, they cannot be relied upon for any purpose and they do not form part of any agreement. No liability is taken for any error, omission or misstatement. A party must rely upon its own inspection(s). Powered by www.propertybox.io


fox & sons



view this property online fox-and-sons.co.uk/Property/AME105874



welcome to

Lime Tree Cottage Home Farm, Tidworth

- Three Bedroom Semi-Detached Cottage
- Well Kept with Renovated Kitchen and Bathroom
- Off Road Parking
- Close to Tidworth
- Close to Shops, Schools and Amenities

Tenure: Freehold EPC Rating: F

Council Tax Band: D

£450,000



Please note the marker reflects the postcode not the actual property

view this property online fox-and-sons.co.uk/Property/AME105874



Property Ref:
AME105874 - 0004

1. MONEY LAUNDERING REGULATIONS Intending purchasers will be asked to produce identification documentation at a later stage and we would ask for your co-operation in order that there is no delay in agreeing the sale. 2. These particulars do not constitute part or all of an offer or contract. 3. The measurements indicated are supplied for guidance only and as such must be considered incorrect. Potential buyers are advised to recheck measurements before committing to any expense. 4. We have not tested any apparatus, equipment, fixtures or services and it is in the buyers interest to check the working condition of any appliances. 5. Where an EPC, or a Home Report (Scotland only) is held for this property, it is available for inspection at the branch by appointment. If you require a printed version of a Home Report, you will need to pay a reasonable production charge reflecting printing and other costs. 6. We are not able to offer an opinion either written or verbal on the content of these reports and this must be obtained from your legal representative. 7. Whilst we take care in preparing these reports, a buyer should ensure that his/her legal representative confirms as soon as possible all matters relating to title including the extent and boundaries of the property and other important matters before exchange of contracts.

 fox & sons



01980 624155



Amesbury@fox-and-sons.co.uk



49 Salisbury Street, AMESBURY, Wiltshire, SP4 7AW



fox-and-sons.co.uk