



1 Bleasdale Road, Whittingham
£369,950





1 Bleasdale Road

Whittingham, Preston

Immaculate 2023 detached bungalow with 3 bedrooms, en-suite, open-plan living, premium kitchen, underfloor heating, garage, EV charging, gardens, and countryside views in Whittingham. Council Tax band: E

Tenure: Freehold

EPC Energy Efficiency Rating: C

EPC Environmental Impact Rating: A

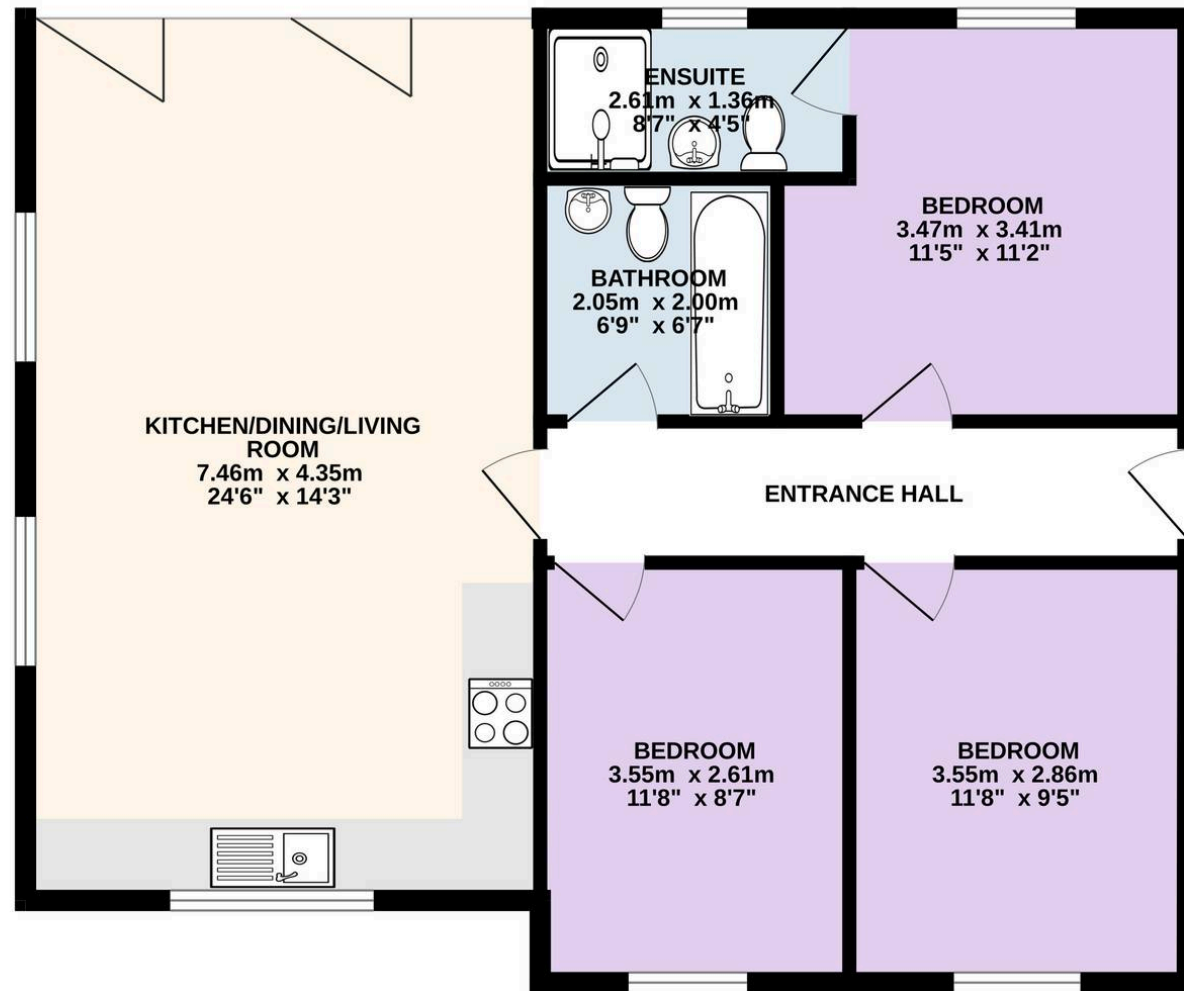
- Detached bungalow built in 2023
- Open plan Kitchen/dining/living room
- Bi-fold doors
- Stuart Frazer Siematic Kitchen
- Three bedrooms
- Family bathroom
- Cost efficient air source heat pump
- Underfloor heating
- Karndean flooring
- 10 year build zone warranty







GROUND FLOOR
77.1 sq.m. (830 sq.ft.) approx.



TOTAL FLOOR AREA : 77.1 sq.m. (830 sq.ft.) approx.
Every attempt is made to ensure accuracy, however all measurements are approximate. This plan is for illustrative purposes only and is not to scale.
Made with Metropix ©2025



Holdens Longridge

66 Derby Road, Longridge - PR3 3FE

01772 233380

longridge@holdens.co.uk

www.holdens.co.uk/

Disclaimer: All information such as plans, dimensions, and details about the property's condition or suitability is provided in good faith and believed to be accurate, but should not be relied upon without independent verification. Buyers or tenants must carry out their own checks. Appliances and systems haven't been tested. It's strongly advised to get professional inspections before making any commitments. No employee or agent of Holdens Estate Agents is authorised to make promises or guarantees about the property. These details are for general guidance only and do not form part of any contract. All discussions with Holdens Estate Agents are subject to contract.